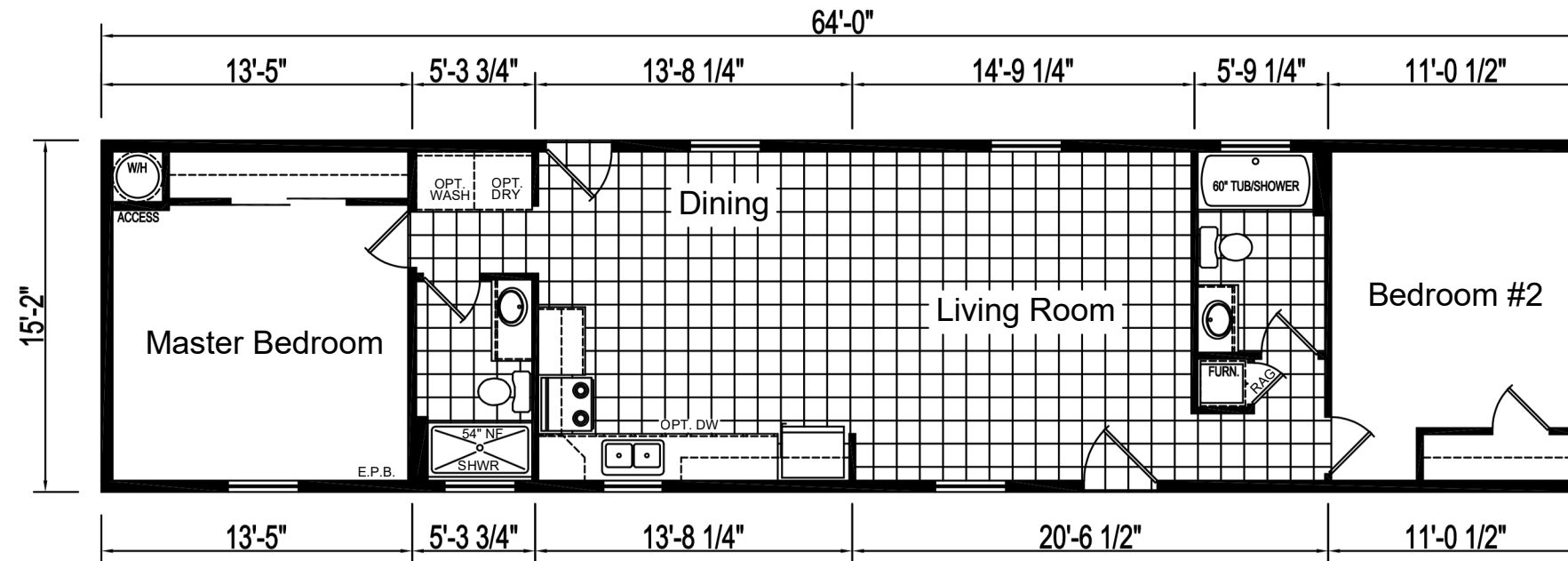


# ABC HOMES - 5 CHEERY STREET



HS-62S618+6FT  
 2 BEDROOM, 2 BATH  
 NOMINAL SIZE: 16'x68'  
 TOTAL AREA: 970 SQ. FT.

DUE TO CONSTANT PRODUCT IMPROVEMENT, ALL DIMENSIONS AND SPECIFICATIONS ARE SUBJECT TO CHANGE WITHOUT NOTICE OR OBLIGATION TO EAGLE RIVER HOMES. DIMENSIONS STATED ARE TO INDUSTRY STANDARDS. THE INFORMATION ON THIS PAGE IS PROPRIETARY AND CONFIDENTIAL.

<p>EAGLE RIVER HOMES</p> <p>THE INFORMATION ON THIS PAGE IS PROPRIETARY AND CONFIDENTIAL.</p>	Revisions	Rev. Date:	Rev. By:	Date Drawn: 07/13/24	Title:	Serial No.:
	A B C				LITERATURE PLAN	-
				Drawn By: DAM	Model:	Sheet:
					HS-62S618+6FT	LIT