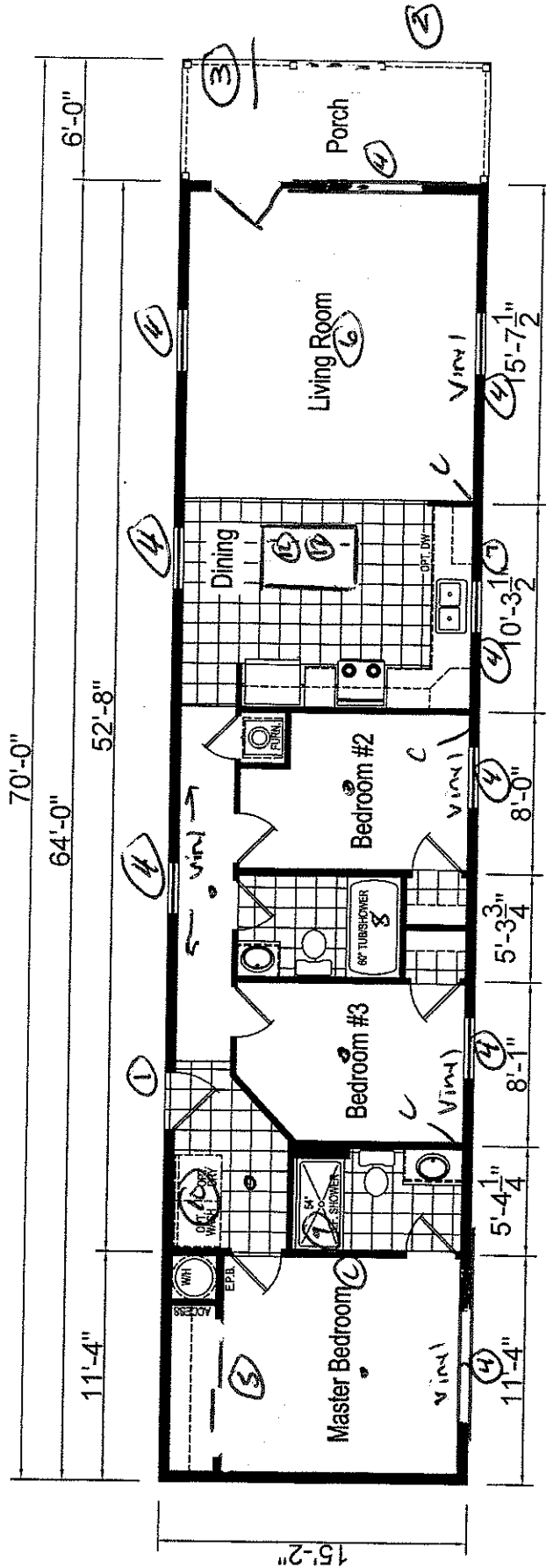


ABC HOMES - PWC
2027 Betty Dr

AT



- ① pier saw
- ② 6' porch
- ③ Porch Ent
- ④ Shuffy
- ⑤ By Pass Door
- ⑥ ceiling Fan
- ⑦ ext Fan
- ⑧ 60" lpc Tub
- ⑨ 54" Narrow Fit Show
- ⑩ DBL Cab
- ⑪ 4862 Island
- ⑫ Stem Light

HS-70S188-2FT+6FTPORCH
3 BEDROOM, 2 BATH
NOMINAL SIZE: 16'x68'
TOTAL AREA: 970 SQ. FT.

DUE TO CONSTANT PRODUCT IMPROVEMENT, ALL DIMENSIONS AND SPECIFICATIONS ARE SUBJECT TO CHANGE WITHOUT NOTICE OR OBLIGATION TO EAGLE RIVER HOMES. DIMENSIONS STATED ARE TO INDUSTRY STANDARDS. THE INFORMATION ON THIS PAGE IS PROPRIETARY AND CONFIDENTIAL.

HUDSON SINGLE

EAGLE RIVER HOMES THE INFORMATION ON THIS PAGE IS PROPRIETARY AND CONFIDENTIAL		Revisions		Rev. Date:	Rev. By:	Date Drawn:	Title:	Serial No.:
A						02/03/23	LITERATURE PLAN	-
B								
C								
D								
							Model:	Sheet:
							DAM	LIT
							HS-70S188-2FT+6FTPORCH	