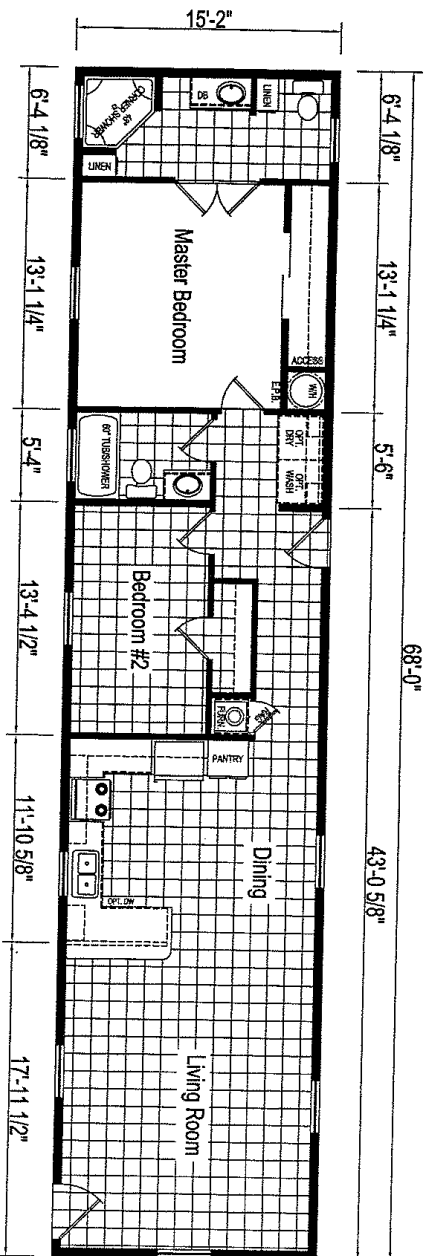


ABC HOMES -

8039 Woodside Dr



HS-66S765+7FT-REVISILE  
 2 BEDROOM, 2 BATH  
 NOMINAL SIZE: 16X72'  
 TOTAL AREA: 1,031 SQ. FT.

HUDSON SINGLE

DUE TO CONSTANT PRODUCT IMPROVEMENT, ALL DIMENSIONS AND SPECIFICATIONS ARE SUBJECT TO CHANGE WITHOUT NOTICE OR OBLIGATION TO EAGLE RIVER HOMES. DIMENSIONS STATED ARE TO INDUSTRY STANDARDS. THE INFORMATION ON THIS PAGE IS PROPRIETARY AND CONFIDENTIAL.

EAGLE RIVER HOMES		Revisions		Date Drawn:	Title:	Serial No.:
A.				9-27-18	LITERATURE PLAN	-
B.						
C.						
D.						
				Drawn By: AS	Model:	Sheet:
					HS-65S765+7FT-REVISILE	LIT

THE INFORMATION ON THIS PAGE IS PROPRIETARY AND CONFIDENTIAL.