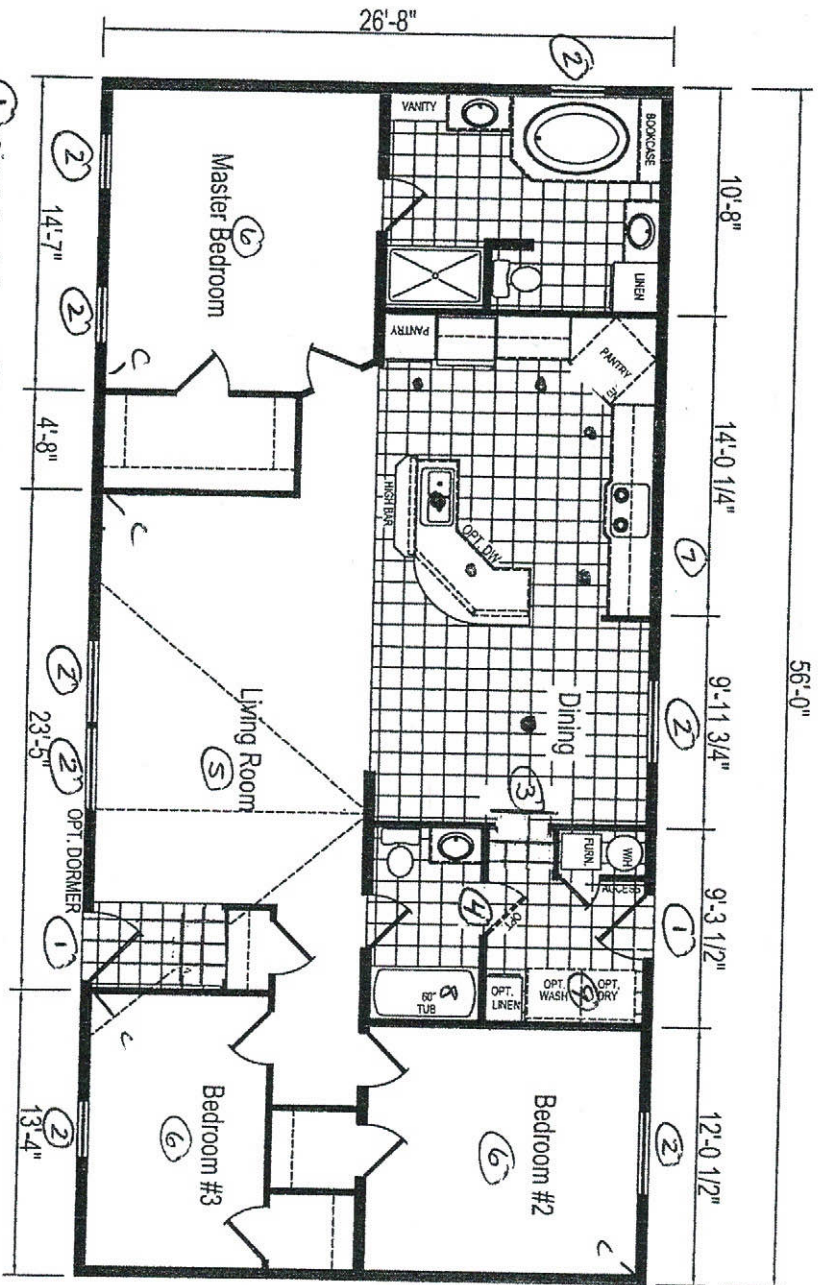


1914 All Kings Dr

ABC Homes

306 All Kings Dr - The Pines



MODEL ERH-60J968
 3 BEDROOM, 2 BATH
 NOMINAL SIZE: 28'x60'
 TOTAL AREA: 1,493 SQ. FT.

- ① pier saver
- ② Shutters
- ③ Barn Door
- ④ Door Installed
- ⑤ Ceiling F₉
- ⑥ Bedroom Light
- ⑦ Exterior Fanout
- ⑧ Cor Ice Tub
- ⑨ DBL cabs

CHESAPEAKE LIMITED SERIES

EAGLE RIVER HOMES

Revisions		Rev. Date:	Rev. By:	Drawn By:	Title:
A	.			STAFF	LITERATURE PLAN
B	.				
C	.				

THE INFORMATION ON THIS PAGE IS PROPRIETARY AND CONFIDENTIAL

Date Drawn: 7-31-09

Model: ERH-60J968

Sheet: LIT