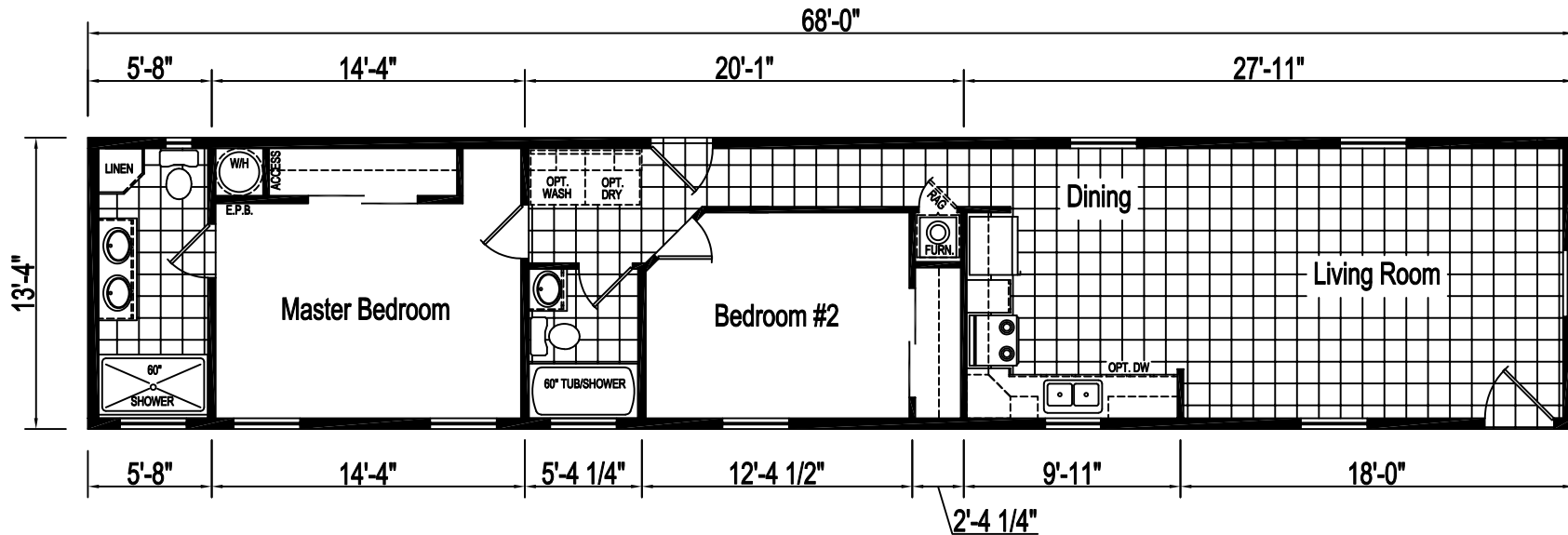


ABC HOMES - 6222 FOSTER PENN



HS-66F461+6FT
 2 BEDROOM, 2 BATH
 NOMINAL SIZE: 14'x72'
 TOTAL AREA: 906 SQ. FT.

DUE TO CONSTANT PRODUCT IMPROVEMENT, ALL DIMENSIONS AND SPECIFICATIONS ARE SUBJECT TO CHANGE WITHOUT NOTICE OR OBLIGATION TO EAGLE RIVER HOMES. DIMENSIONS STATED ARE TO INDUSTRY STANDARDS. THE INFORMATION ON THIS PAGE IS PROPRIETARY AND CONFIDENTIAL.



Revisions		Rev. Date:	Rev. By:	Drawn By:	Title:	Serial No.:
A	.	.	.	DAM	LITERATURE PLAN	-
B	.	.	.			
C	.	.	.			
				Date Drawn:	Model:	Sheet:
				11/20/23	HS-66F461+6FT-STS	LIT