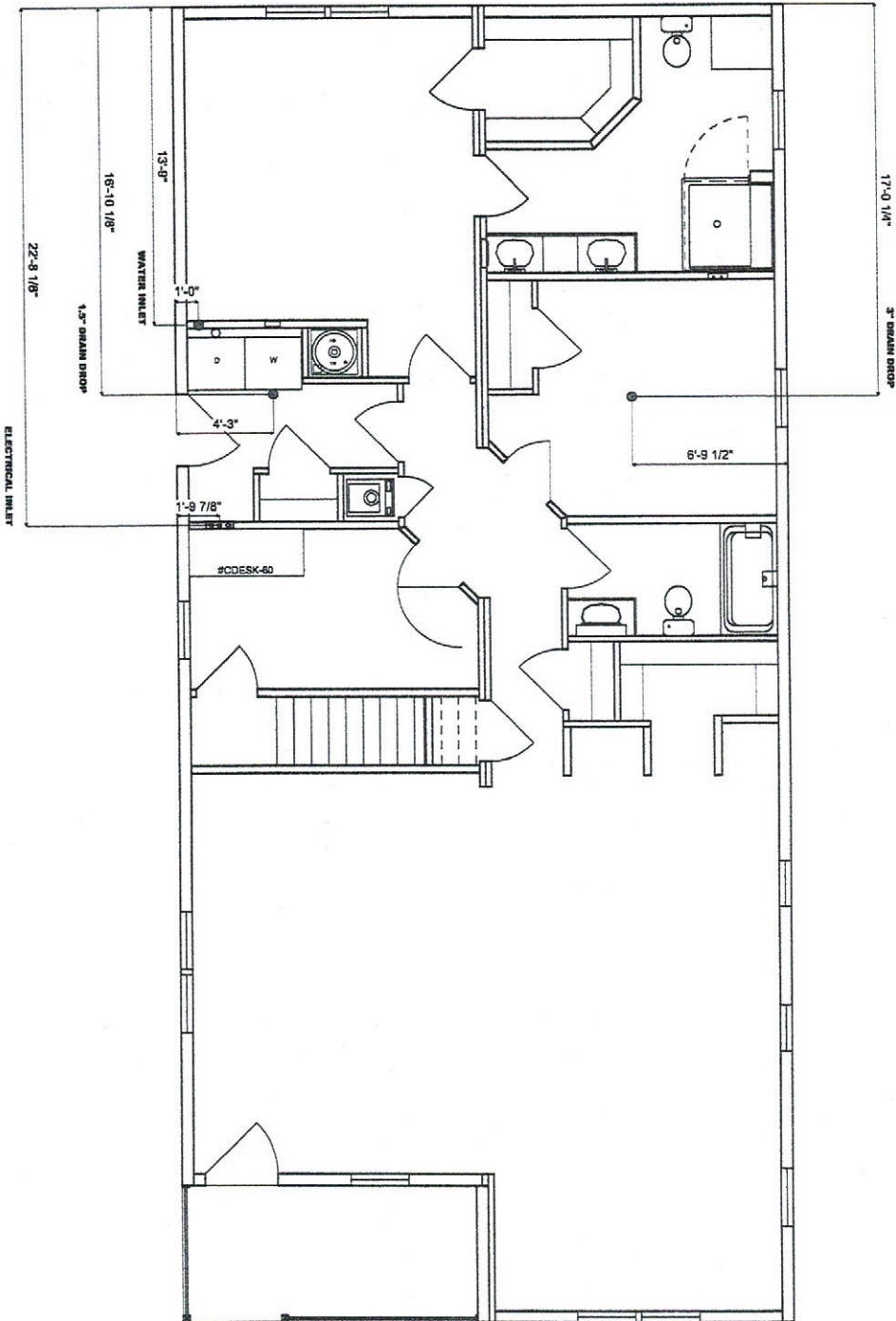


Indale 1/19 25 March 1982

ALL UTILITY LOCATIONS ARE APPROXIMATE AND ARE MEASURED FROM THIS END OF THE HOME.



MANUFACTURER DISCLAIMER NOTICE:
 PLEASE READ AND UNDERSTAND THE FOLLOWING INFORMATION. PINE GROVE MFG. HOMES/EPIC/VALLEY HOMES INC. DOES NOT DO ANY SITE WORK FOR HOMES. IT WILL BE THE RESPONSIBILITY OF THE DEALER/SITE CONTRACTOR TO INSURE THAT ALL SITE WORK WILL CORRELATE WITH THE UNIT ORDERED. NOTICE TO ALL HOME INSTALLERS: MANUFACTURED HOMES WEIGH SEVERAL TONS SO DO NOT ATTEMPT TO INSTALL ANY HOME ON SITE WITHOUT HAVE A FIRM FOUND TO MEET THESE REQUIREMENTS. UNDERSTANDING OF ALL INSTALLATION REQUIREMENTS IS THE RESPONSIBILITY OF THE HOME BUYER. PLEASE READ AND UNDERSTAND THE SET-UP AND INSTALLATION MANUALS SUPPLIED WITH THE HOME BEFORE ATTEMPTING ANY INSTALLATION OF ANY MANUFACTURED HOME.

DRAIN DROPS ARE APPROXIMATE AND COULD BE ADJUSTED OR MOVED DUE TO CODE INTERPRETATIONS AND MANUFACTURING PROCEDURES, AN ACCURATE DROP WILL BE SUPPLIED TO THE SALES REP AT THE TIME OF PRODUCTION.

HITCH END

REVISIONS

NOTES



PINE GROVE HOMES SINCE 1982

STD. PRODUCTION UNIT
 DROPP PRINT
 DATE: 9/18/83
 NETR-3461-222113