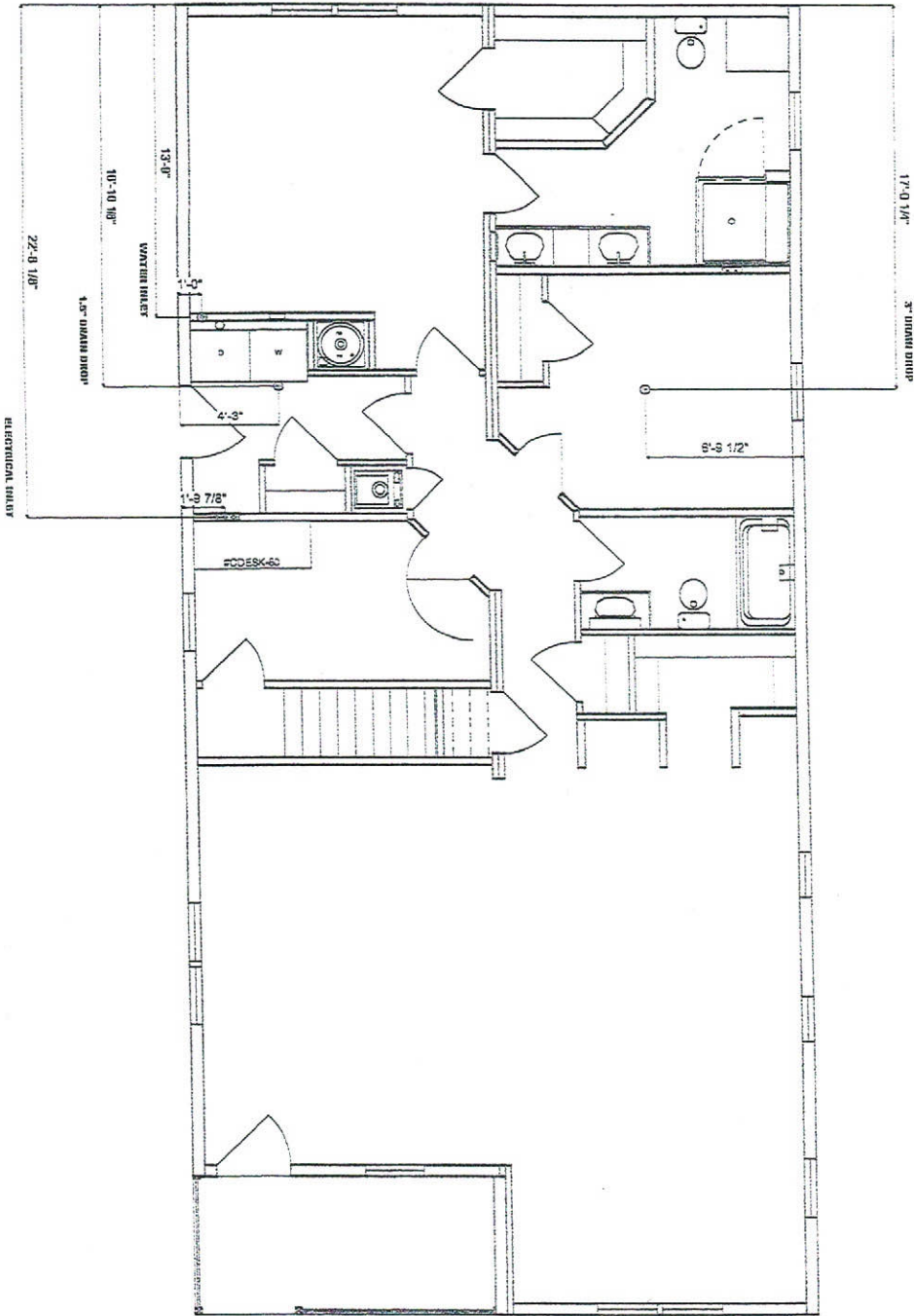


ALL UTILITY LOCATIONS ARE APPROXIMATE AND ARE MEASURED FROM THIS END OF THE HOME.



HITCH END

MANUFACTURER DISCLAIMER NOTICE:
 PLEASE READ AND UNDERSTAND THE FOLLOWING INFORMATION:
 PINE GROVE MFG. HOMES/PRESIDENT VALLEY HOMES INCLUDES NOT DO ANY SITE WORK FOR HOMES.
 IT WILL BE THE RESPONSIBILITY OF THE DEALER/SITE CONTRACTOR TO INSURE THAT ALL SITE WORK WILL COME AFT WITH THE UNIT ORDERED.
 NOTICE TO ALL HOME INSTALLERS/MANUFACTURED HOMES WHICH SEVERAL TONS, DO NOT ATTEMPT TO INSTALL ANY HOME ON SITE WITHOUT HAVING EXPERIENCED THESE REQUIREMENTS AND UNDERSTANDING OF ALL INSTALLATION REQUIREMENTS AND UNDERSTANDING OF ALL REQUIREMENTS. THESE REQUIREMENTS INCLUDE: INSURANCE, INDEPENDENT SET UP AND INSTALLATION MANUAL, SUPPLIED WITH THE HOME BEFORE ATTEMPTING ANY INSTALLATION OF ANY MANUFACTURED HOME.

DRAIN DROPS ARE APPROXIMATE AND COULD BE ADJUSTED OR MOVED DUE TO CODE INTERPRETATIONS AND MANUFACTURING PROCEDURES, AN ACCURATE DROP WILL BE SUPPLIED TO THE SALES REP AT THE TIME OF PRODUCTION.

PINE GROVE HOMES
 5 N.E. 1982
 STD. PRODUCTION UNIT
 DROPP PRINT
 ABC
 NETR-3461-222113