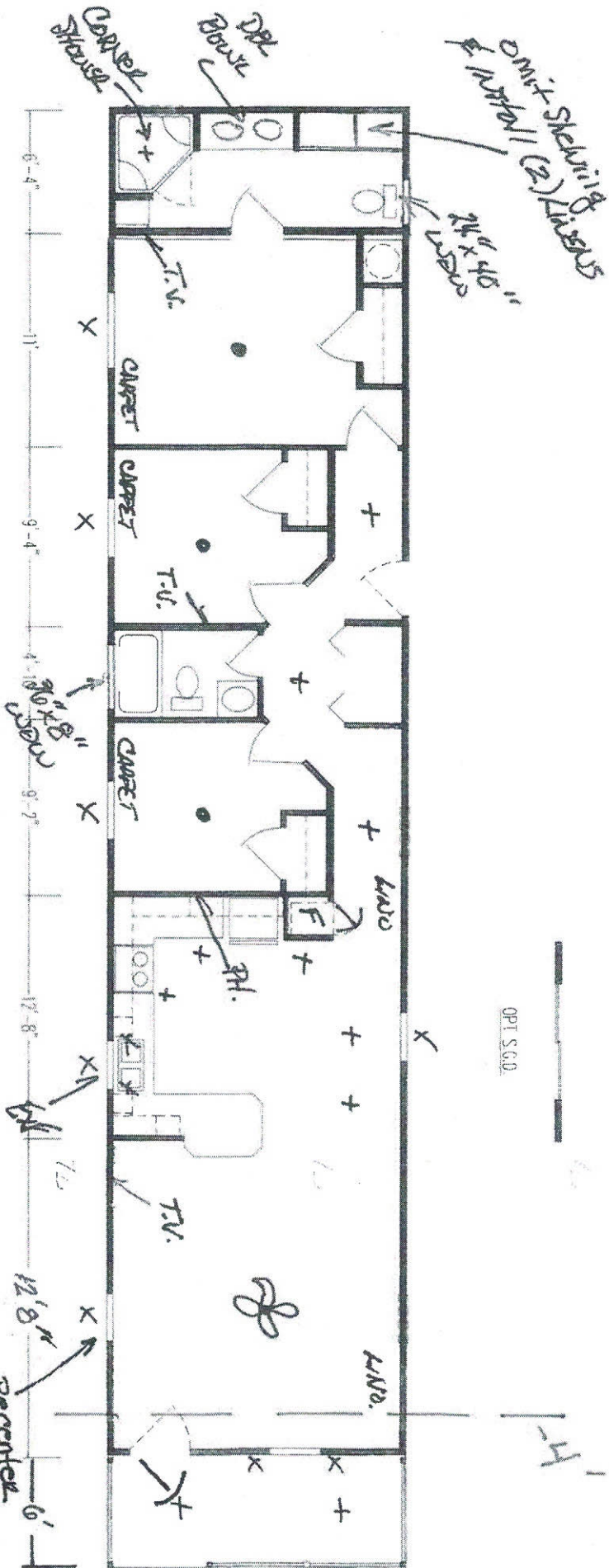


*Liveable Area*



OPT S.C.D.

DIVISIONS			
231	SUGARCREEK		
233	ARKANSAS CITY		
235	SAN JACINTO		
237	WOODLAND		
239	OCALA		
X 241	BOCA		
243	LANCASTER		
245	McMINNVILLE		

REVISIONS			
0	UPD TO REKEY SPECS/SHS	9/2/21	KS
1	ADDED CM ALARMS & RECEIPT @ KITCHEN PENINSULA	9/8/21	MB
2	REV TO W-101-A CAB, SPECS & WINDOWS	1/29/21	SJC
4	ADD RECEIPT ON WALL NEXT TO @ S.B. UPD OF S.HI RECEIPT	1/1/21	KS

BOX LENGTH	DESCRIPTION
7'-0"	7010-30K-2B

SKYLINE	
DRWN BY	SJC
DATE	03/11/2013
WIND ZONE	3B
ROOF	SMN
ZONES	
SHEET	
OF	2
DRAWING NUMBER	
	16-02714

HITCH END.