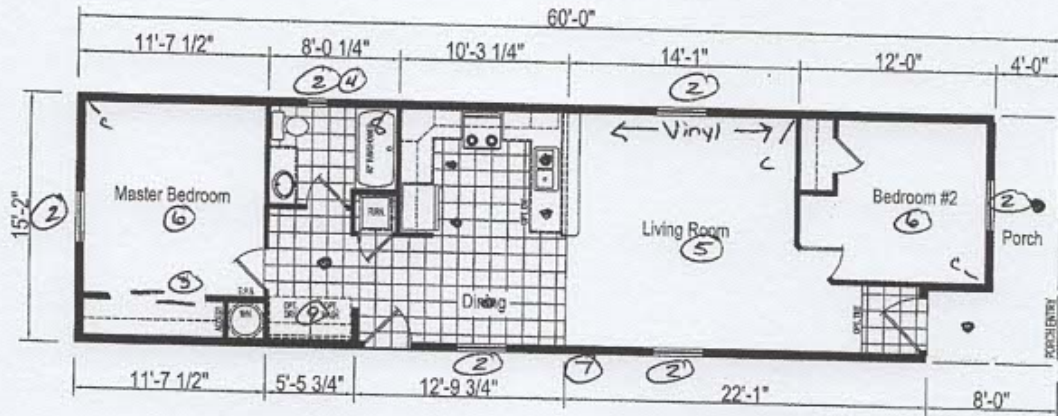


ABC Homes

8010 Woodside Pennwoods

ER09595



- ① pier saw
- ② shutters
- ③ By Pass Door
- ④ 1440
- ⑤ ceiling fan
- ⑥ Bedroom light
- ⑦ Ext Faucet
- ⑧ 60" lpc Tub
- ⑨ DBx cats

CL-60F547+4FT-16W
 2 BEDROOM, 1 BATH
 NOMINAL SIZE: 14'x64'
 TOTAL AREA: 831 SQ. FT.
 (EXCLUDES PORCH)

DUE TO CONSTANT PRODUCT IMPROVEMENT, ALL DIMENSIONS AND SPECIFICATIONS ARE SUBJECT TO CHANGE WITHOUT NOTICE OR OBLIGATION TO EAGLE RIVER HOMES. DIMENSIONS STATED ARE TO INDUSTRY STANDARDS. THE INFORMATION ON THIS PAGE IS PROPRIETARY AND CONFIDENTIAL.

EAGLE RIVER HOMES <small>THE INFORMATION ON THIS PAGE IS PROPRIETARY AND CONFIDENTIAL.</small>	Revisions			Rev. Date	Rev. By	Date Drawn	Title	Serial No.
	A					06/15/22	LITERATURE PLAN	-
	B							
	C							
D								
						Drawn By: DAM	Model: CL-60F547+4FT-16W	Sheet: LIT