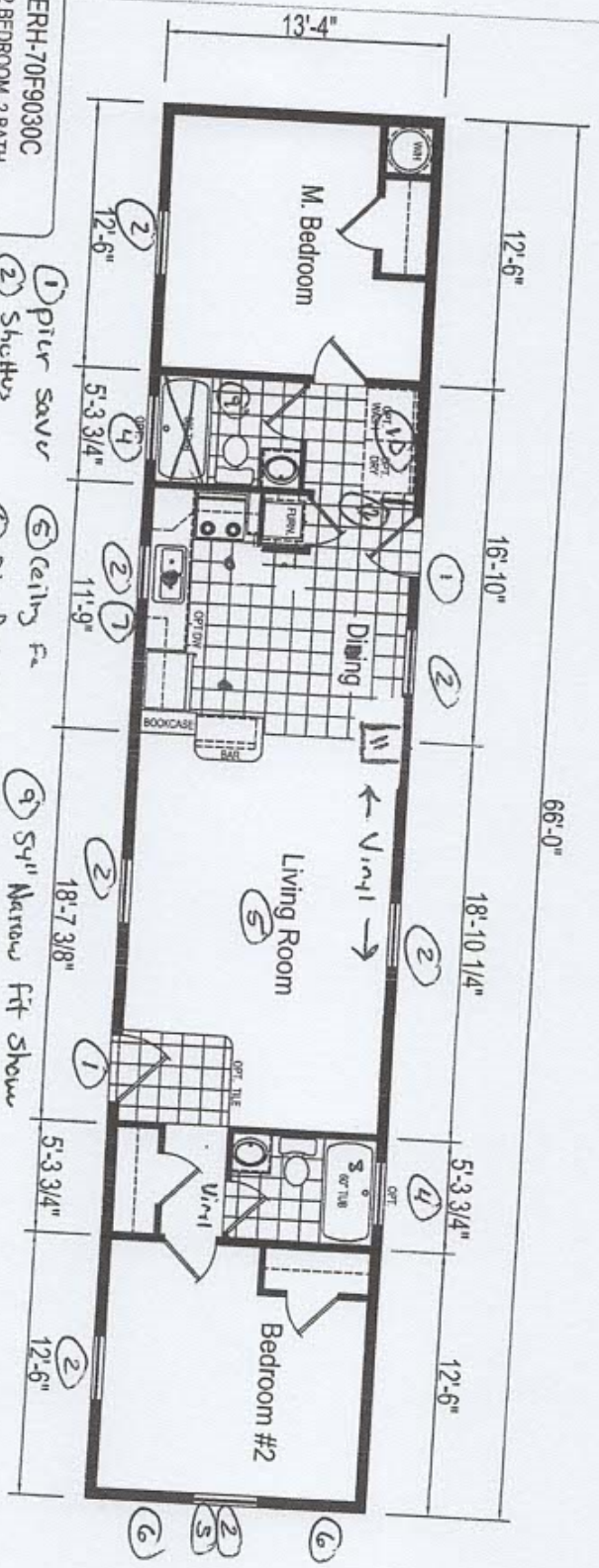


ABC Homes
 15 Kennedy - Biscay Acres



ERH-70F9030C
 2 BEDROOM, 2 BATH
 NOMINAL SIZE: 14x70'
 TOTAL AREA: 880 SQ. FT.

- 1 pier saws
- 2 Shutters
- 3 Eyebrow
- 4 Transom
- 5 ceiling fa
- 6 Dlx Panel light
- 7 Ext Fawcst
- 8 cov lpc Tub
- 9 54" Narrow fit show
- 10 Double cab
- 11 6 Door Panel
- 12 skid wdl

DUE TO CONSTANT PRODUCT IMPROVEMENT, ALL DIMENSIONS AND SPECIFICATIONS ARE SUBJECT TO CHANGE WITHOUT NOTICE OR OBLIGATION TO EAGLE RIVER HOMES. DIMENSIONS STATED ARE TO INDUSTRY STANDARDS. THE INFORMATION ON THIS PAGE IS PROPRIETARY AND CONFIDENTIAL.

EAGLE RIVER HOMES
 THE INFORMATION ON THIS PAGE IS PROPRIETARY AND CONFIDENTIAL.

Revisions		Rev. Date:	Rev. By:	Date Drawn:	Title:
A				1-11-12	LITERATURE PLAN
B					
C					
D					

Drawn By: STAFF
 Model: ERH-70F9030C
 Serial No.: LIT