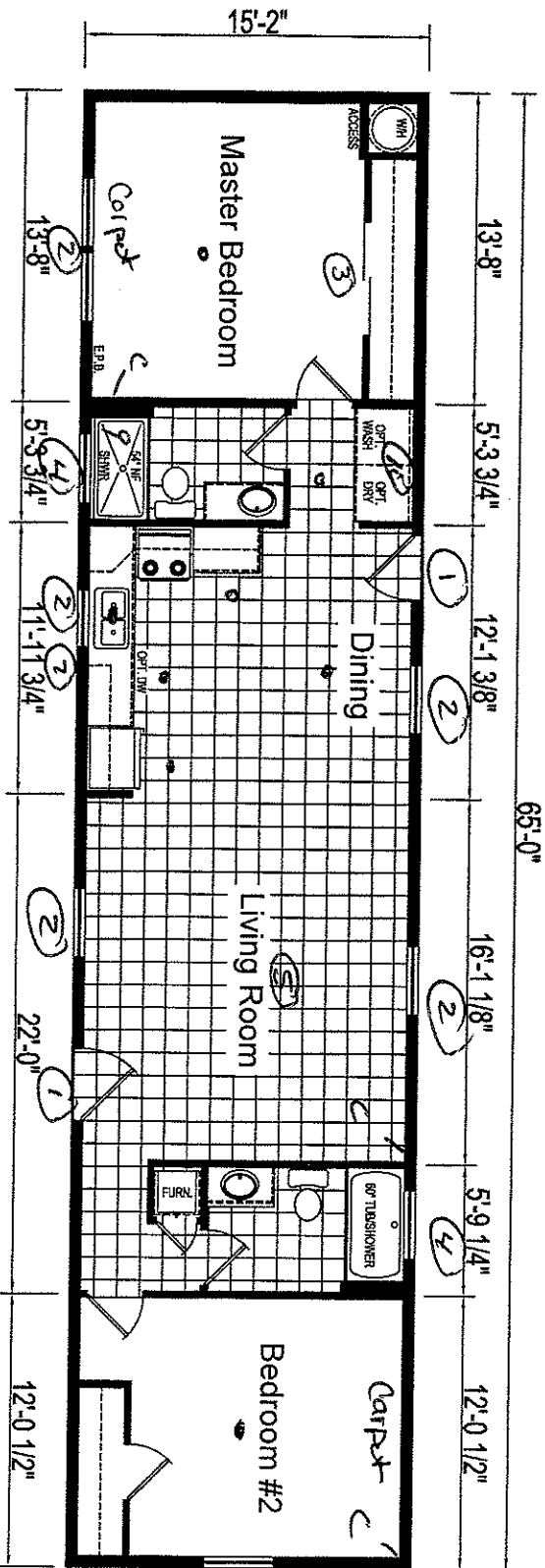


ABC HOMES - STOCK

5075 Grady Dr



HS-62S618+7FT
 2 BEDROOM, 2 BATH
 NOMINAL SIZE: 16x89'
 TOTAL AREA: 985 SQ. FT.

- ① pier saver
- ② Shutters
- ③ By Pass Doors
- ④ Transom
- ⑤ ceiling F
- ⑥ Dlx Porch Lg
- ⑦ Est Fany
- ⑧ 60" Ipc Tub
- ⑨ 54" Narrow Flt show
- ⑩ Dbc cky

Handwritten signature

DUE TO CONSTANT PRODUCT IMPROVEMENT, ALL DIMENSIONS AND SPECIFICATIONS ARE SUBJECT TO CHANGE WITHOUT NOTICE OR OBLIGATION TO EAGLE RIVER HOMES. DIMENSIONS STATED ARE TO INDUSTRY STANDARDS, THE INFORMATION ON THIS PAGE IS PROPRIETARY AND CONFIDENTIAL.

		Revisions:		Rev. Date:		Rev. By:		Date Drawn:		Title:	
A									07/08/21		LITERATURE PLAN
B											
C											
D											
THE INFORMATION ON THIS PAGE IS PROPRIETARY AND CONFIDENTIAL.		Drawn By: DAM		Model: HS-62S618+7FT		Serial No.:		Sheet: LIT		-	