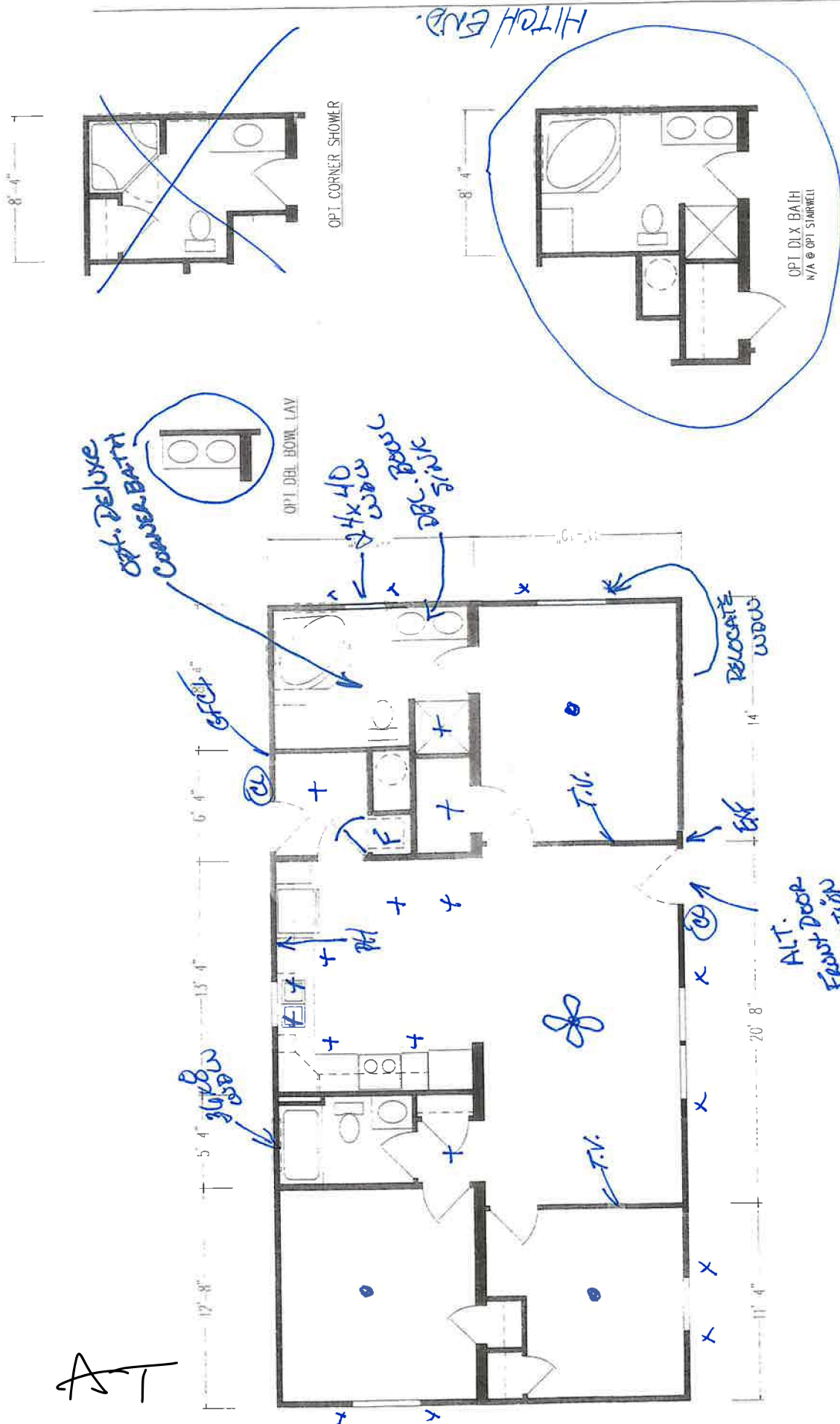


Penwood Crossing
#3.

AT



DIVISIONS		REVISIONS	
111	341 X 552	111	341 X 552
112	344	553	
115	345	571	
125	355	591	
131	500	812	
143	531		
163	535		
171	536		
181	538		

DATE	BY	DESCRIPTION
10/16/18	RS	B UPDATE TO NEWEST SPECS
5/12/15	SC	A REV 10 94-101-A CAB SPECS, WINDOWS & ELEC

SKYLINE	DRAWN BY	1 L	WIND ZONE	15g
	DATE	02/21/2013	ROOF ZONE	S/M/N
	SHEET	1	OF	2
	DRAWING NUMBER	24-02946		
		4624 JCK-2B		

2x6 Siderwall-