



# EAGLE RIVER HOMES



Easy Living  
Series

# Easy Living Standard Features

*The Ultimate Home Value with Quality, Durability, and Flexibility in Design.*

## Construction

- 2" x 6" Exterior Walls 16" O.C.
- 2" x 6" Floor Joists 16" O.C.
- 5/8" Tongue and Groove OSB Floor Decking
- Wind Zone 1 Construction
- Zone III Insulation (R12/R19/R22)
- Removable Hitches
- 3/8" Fiberboard Backing
- Vinyl Siding
- Shingle Roof
- Ridge Vent Construction with Fully-Vented Eaves
- 8' Flat Textured Ceilings
- 3680 Fiberglass Front Door with Sunburst and Deadbolt Lock
- 3280 - 9 Lite Fiberglass Rear Door with Deadbolt Lock
- Thermal Windows with Grids
- Deluxe Raised Panel Shutters on Front Door Side
- Finished Drywall in all Impact Areas
- Painted (Retailer choice from Eagle River Paint Selections)
- Curved Drywall Arches (Model Specific)
- Dormer over Front Door
- Column Accents at Front Door
- Pier Savers at Front Door
- OSB Backer behind Vinyl Siding

## Floor Coverings

- Congoleum Flooring in Kitchen, Baths, and Foyer
- Rebond Carpet Pad
- Level Two Carpet
- Carpet Bar at Transitions

## Plumbing & Heating

- Elongated Residential Toilets
- 60" One-Piece Fiberglass Tubs
- Deep-Well Stainless Steel Kitchen Sink
- China Bath Sinks
- Cross Handle Plumbing Fixtures
- Plumbing for Washer
- Water Shut-Off Valves
- Hall Bath Vanity Mirrors with Fluted Trim
- Master Bath Vanity with Oval Mirrors
- 40 Gallon Electric Water Heater with Overflow Drip Pan
- Electric Ignition Gas Furnace
- In Floor Heat Duct Crossovers
- Center Seal at Mate Line

## Appliances

- 18 Cu Ft Auto Defrost Refrigerator
- 30" Gas Range
- Dishwasher
- Microwave over Range
- White or Black Appliances

## Electric & Lighting

- 100 Amp Panel Box
- Lighted Vent Fans All Baths CFM
- Wire and Vent for Dryer
- GFI at Kitchen Counters and Bath Vanities
- Deluxe Porch Light at Front Door
- Exhaust Vent Fan with Light Kitchen
- Ceiling Fan/Light in Living Room
- Overhead Bedroom Ceiling Lights
- 6 Recessed Can Lights in Kitchen
- 2 Phone Jacks
- 2 Cable Jacks
- 2 Stem Lights over Island (Where Available)
- Lighted Vent Fans All Baths

## Cabinets

### WOOD FLAT PANEL CABINET DOORS

Available in Stratford Oak, Java and Gray Ash

*(Hickory and White Flat Panel, Raised Panel Cabinets Available)*

- Hidden Cabinet Door Hinges
- Drawers over Doors in Kitchen (Where available)
- 36" High Vanities
- Overhead Cabinet Top & Bottom Trim
- Overhead Cabinets Lined with Center Shelves
- Base Cabinets w/Center Shelf in Kitchen
- Metal Drawer Guides
- Utensil Separator in Kitchen Drawer
- Formica Brand Counter Tops
- Ceramic Tile behind Range
- Ceramic Tile Backsplash throughout
- Rounded Counter Top Edging T/O
- Euro Style Cabinet Pulls
- Kitchen Island with Pedestal Legs (Where Available)
- Cabinets Over Refrigerator

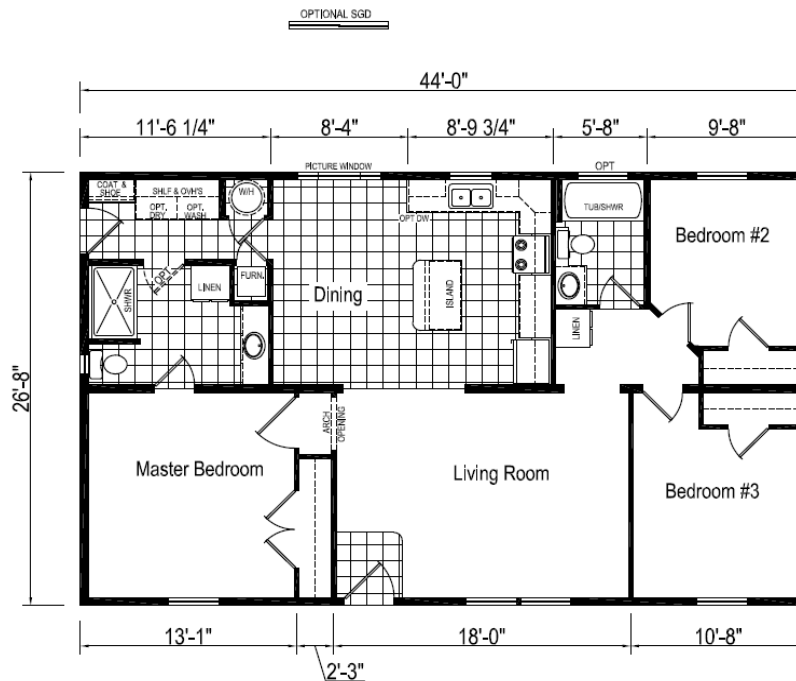
## Miscellaneous

- Deluxe Molding throughout Inc. 3 5/8" Cove
- Pre-Hung White 6 Panel Interior Passage Doors
- 36" 6 Panel doors to Master Bed and Bath
- Satin Nickel Passage Door Knobs
- Vented Shelving throughout
- Shower Curtain in Tub Baths
- Color Coordinated Valence Drapery Package
- Mini Blinds all Operating Windows

Due to constant product improvement, all prices and specifications are subject to change without notice or obligation to Eagle River Homes. Dimensions are stated to industry standards. Width and length dimensions are nominal and not to be used for setup of home. The square footage shown is nominal to exterior floor size.

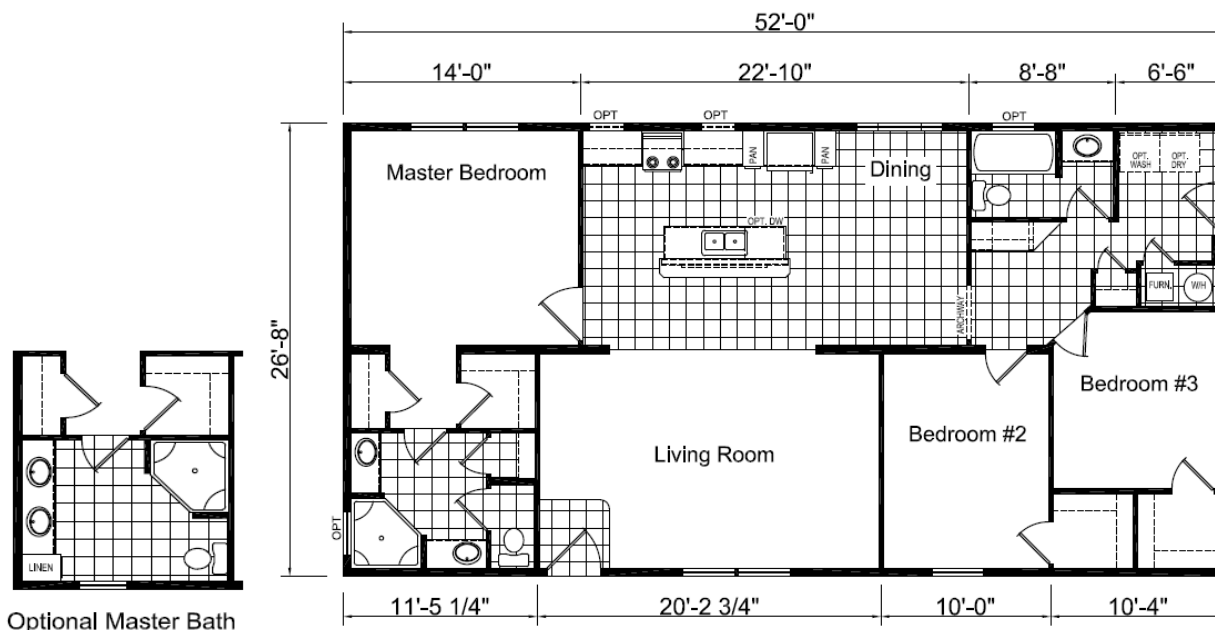
## Easy Living Series: Model HD-48J579-S

3 Bedroom, 2 Bath  
Appx. 1,173 sq. ft.  
Nominal Size: 28' x 48'  
Actual Size: 26' 8" x 44'



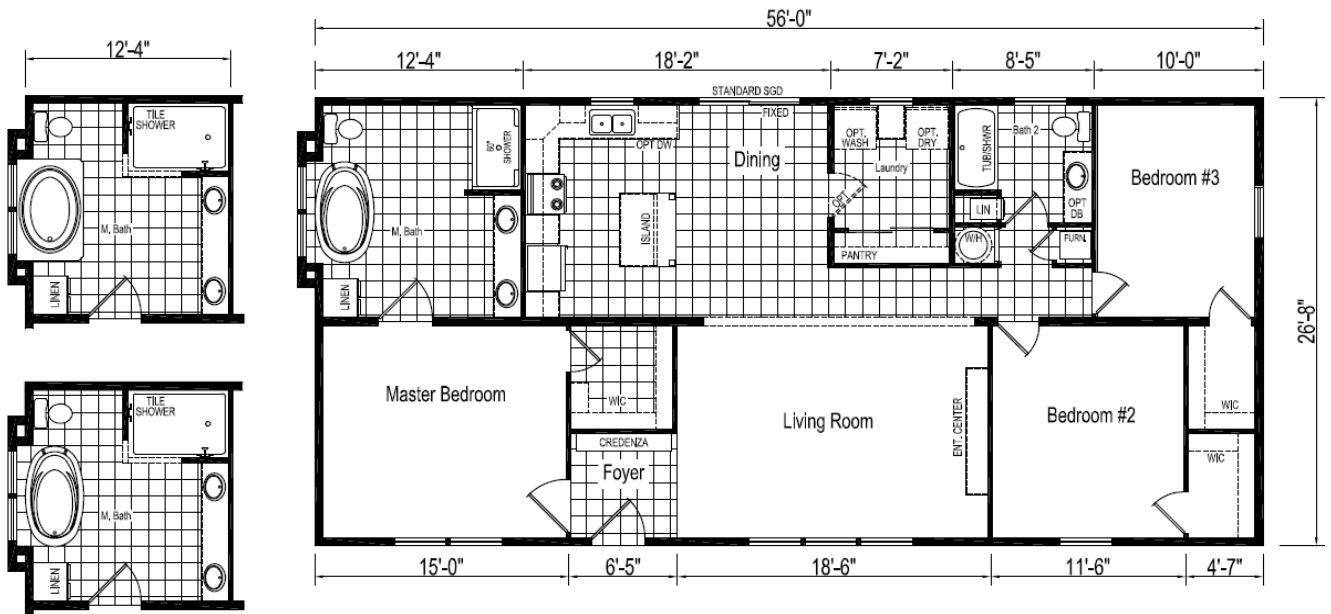
## Easy Living Series: Model HD-56J402-S

3 Bedroom, 2 Bath  
Appx. 1,386 sq. ft.  
Nominal Size: 28' x 56'  
Actual Size: 26' 8" x 52'



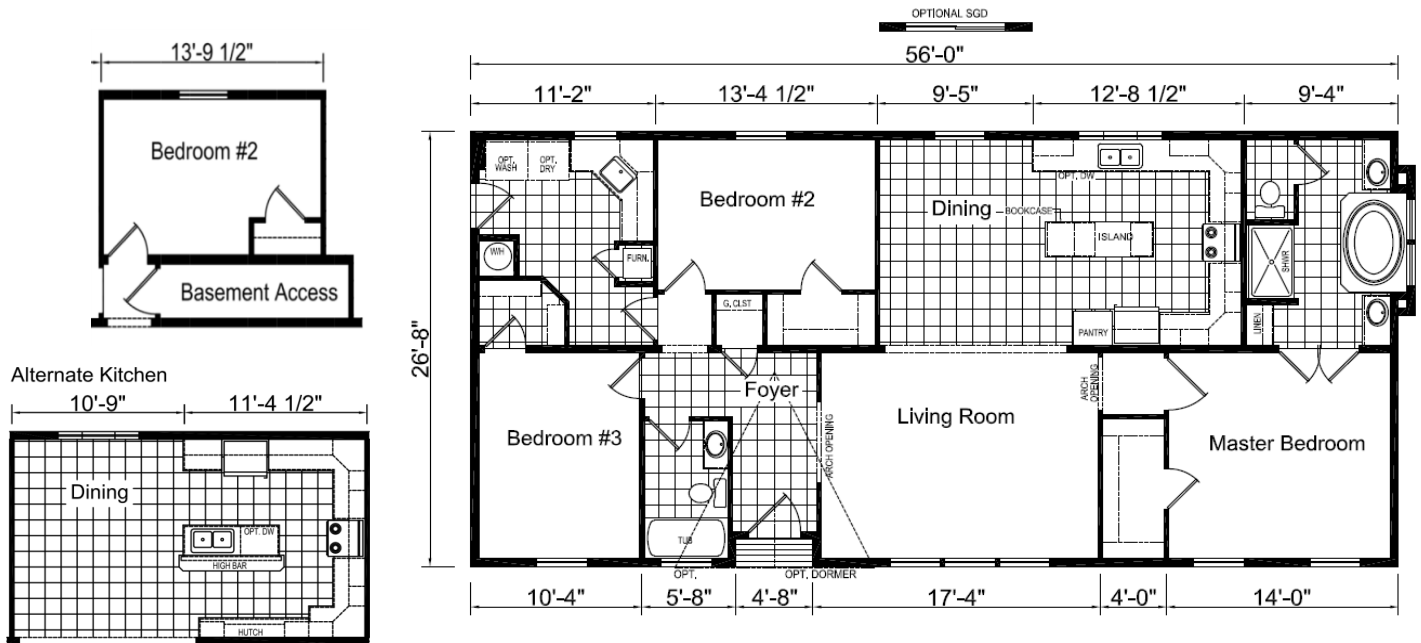
3 Bedroom, 2 Bath  
 Appx. 1,493 sq. ft.  
 Nominal Size: 28' x 60'  
 Actual Size: 26' 8" x 56'

## Easy Living Series: Model HD-60J612-S



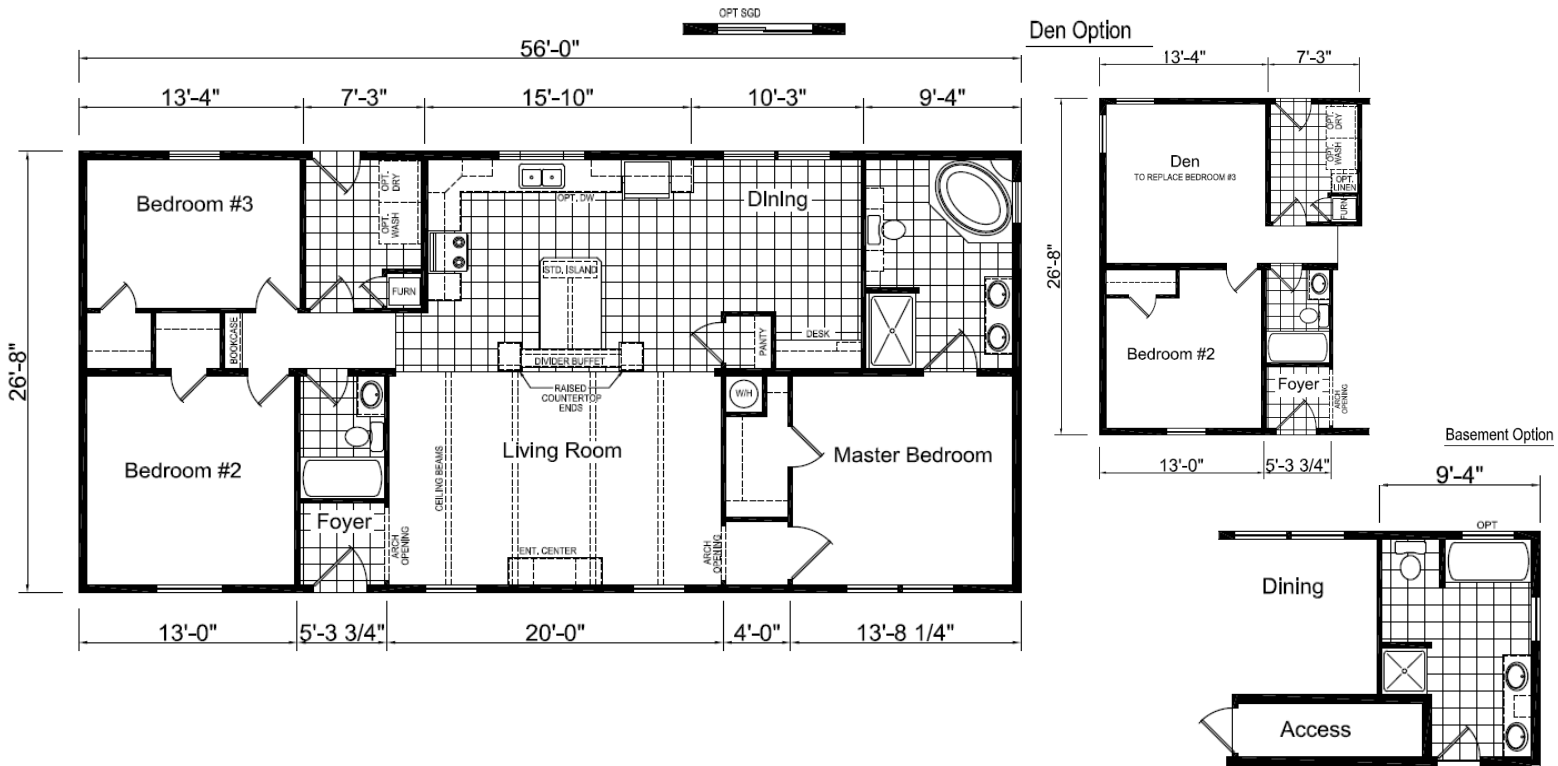
3 Bedroom, 2 Bath  
 Appx. 1,493 sq. ft.  
 Nominal Size: 28' x 60'  
 Actual Size: 26' 8" x 56'

## Easy Living Series: Model HD-60J7009-S



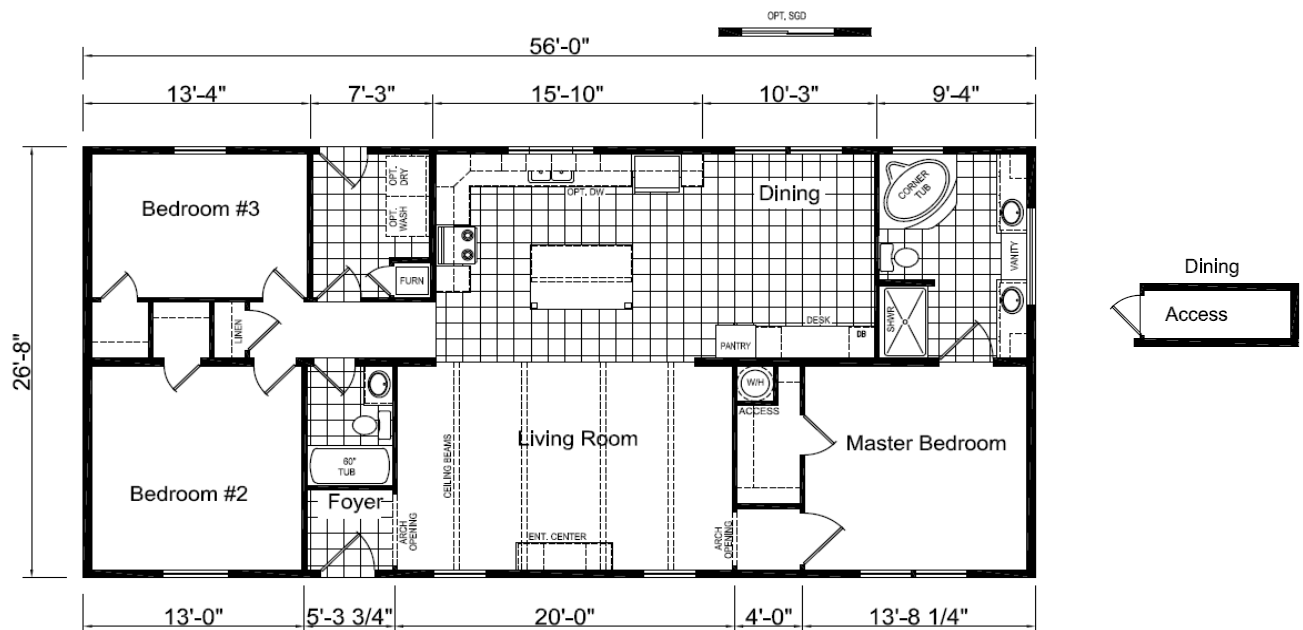
# Model HD-60J835-S

Actual Size: 26' 8" x 56'



# Model HD-60J835B-S

Actual Size: 26' 8" x 56'

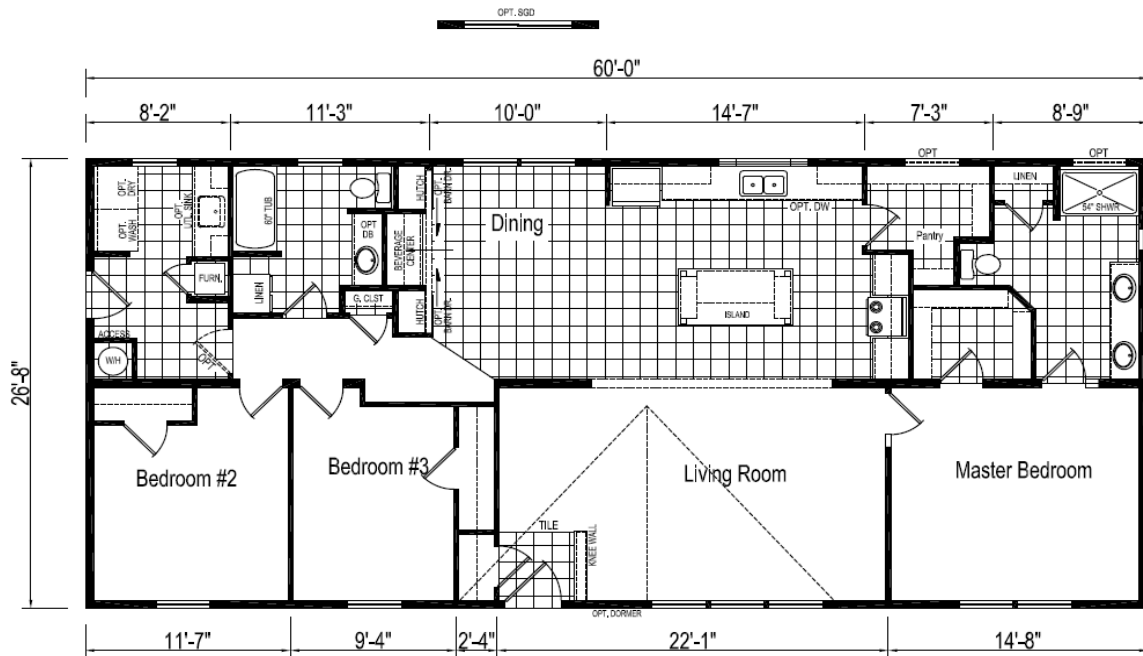




3 Bedroom, 2 Bath  
 Appx. 1,600 sq. ft.  
 Nominal Size: 28' x 64'  
 Actual Size: 26' 8" x 60'

## Easy Living Series:

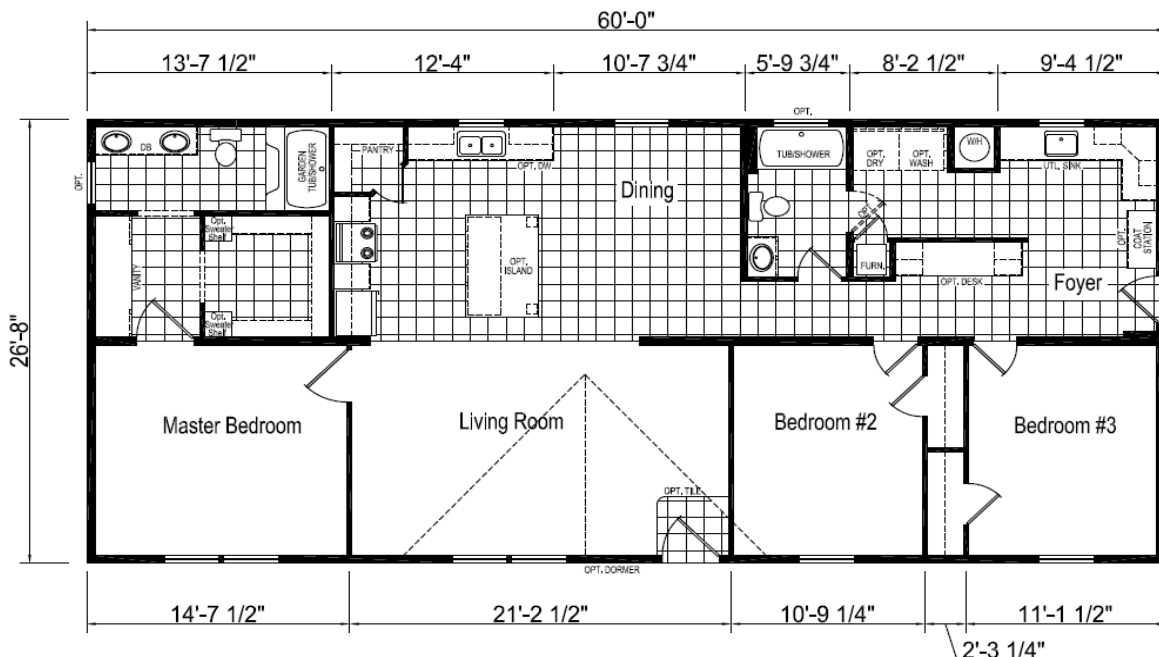
# Model HD-64J466-S



3 Bedroom, 2 Bath  
 Appx. 1,600 sq. ft.  
 Nominal Size: 28' x 64'  
 Actual Size: 26' 8" x 60'

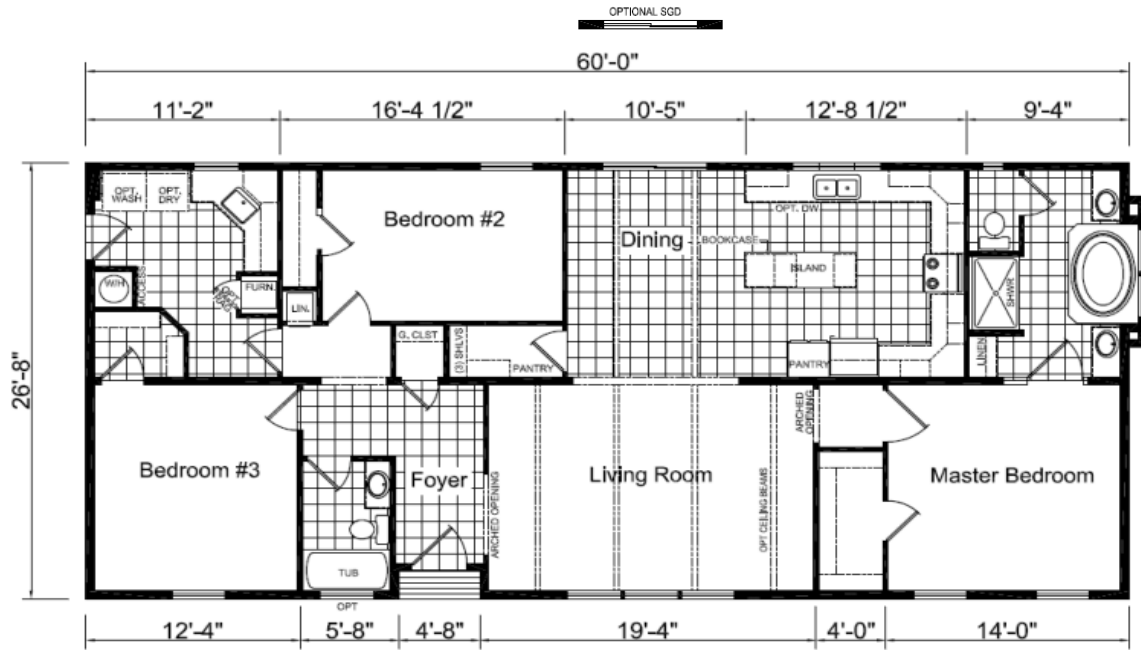
## Easy Living Series:

# Model HD-64J483-S



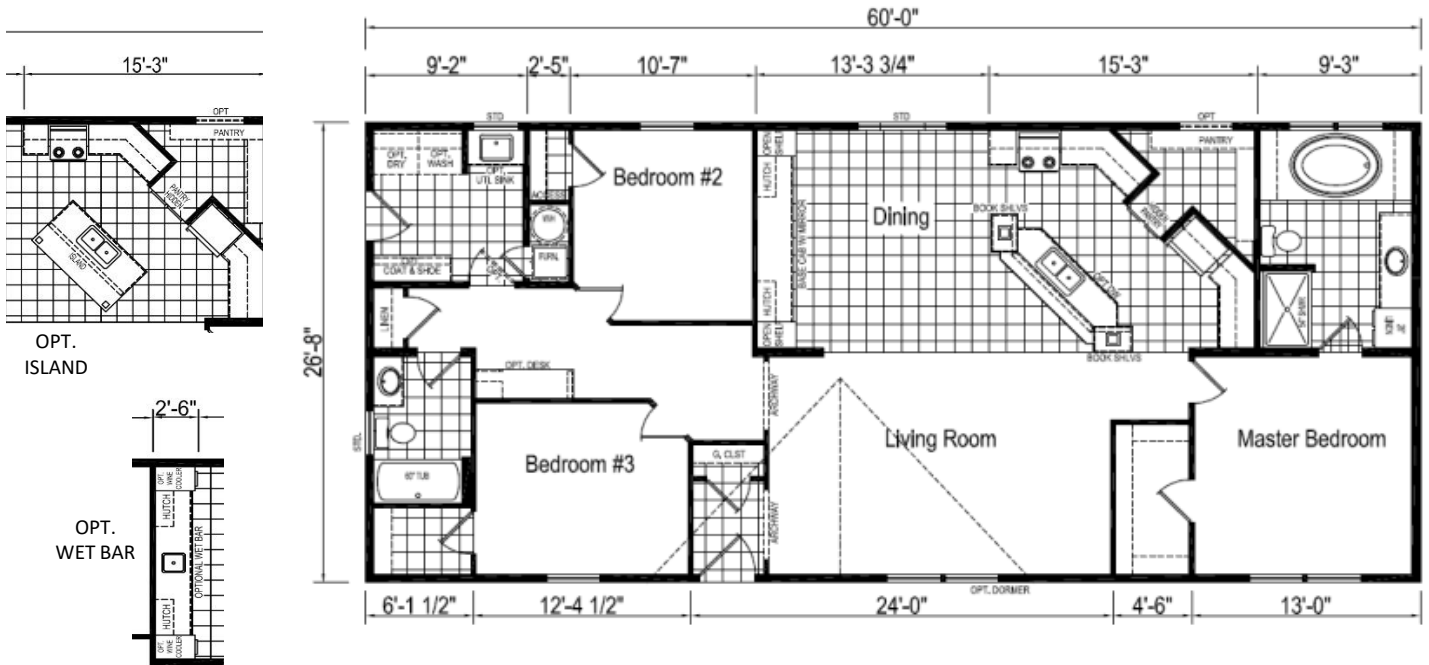
# Easy Living Series: Model HD-64J505-S

3 Bedroom, 2 Bath  
Appx. 1,600 sq. ft.  
Nominal Size: 28' x 64'  
Actual Size: 26' 8" x 60'



# Easy Living Series: Model HD-64J583-S

3 Bedroom, 2 Bath  
Appx. 1,600 sq. ft.  
Nominal Size: 28' x 64'  
Actual Size: 26' 8" x 60'





21 South Groffdale Road • Leola, PA 17540  
(800) 406-1062 • (717) 656-2381  
Fax (717) 656-0316  
[www.EagleRiverHomes.net](http://www.EagleRiverHomes.net)

January 2020