

# Wood Manor

## *Developer*

### **24/28/32 Series**

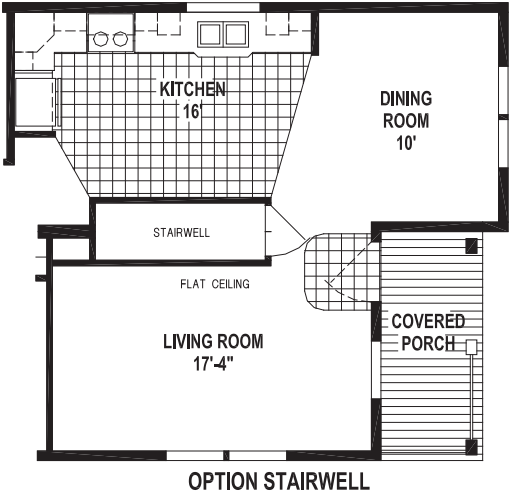
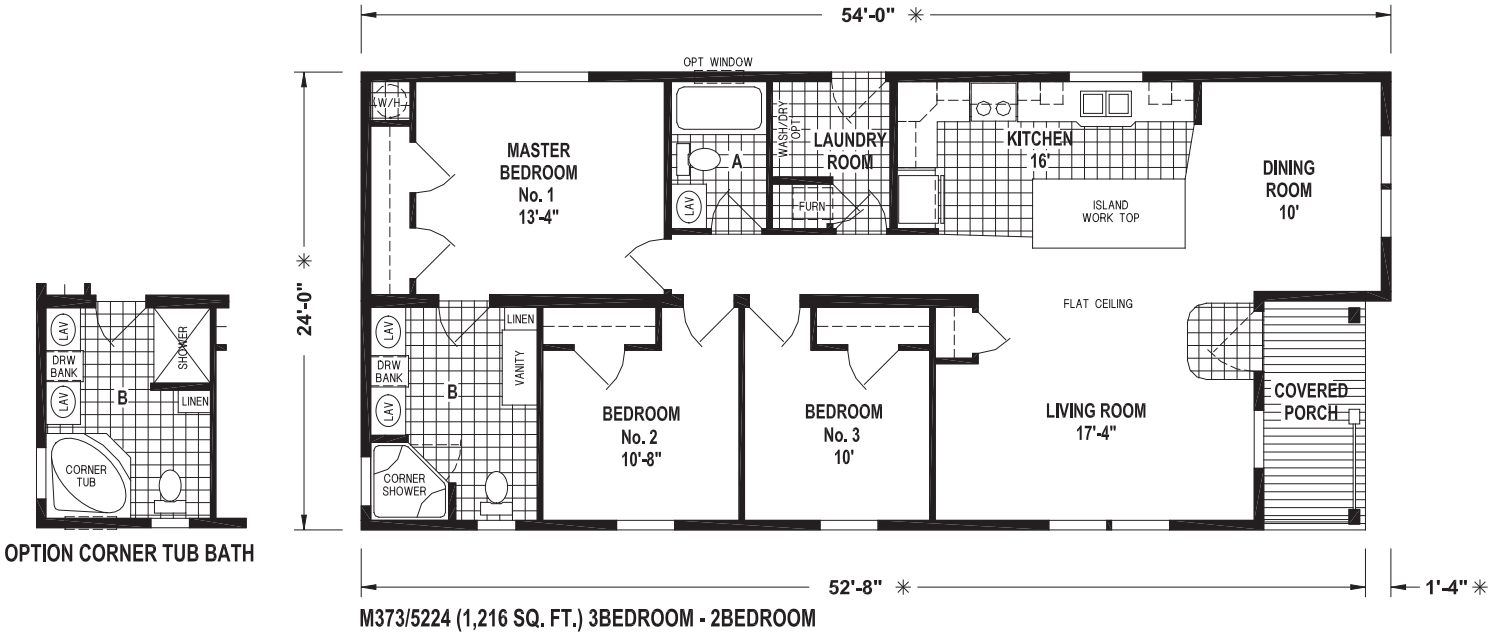


Some Items Shown May Be Optional

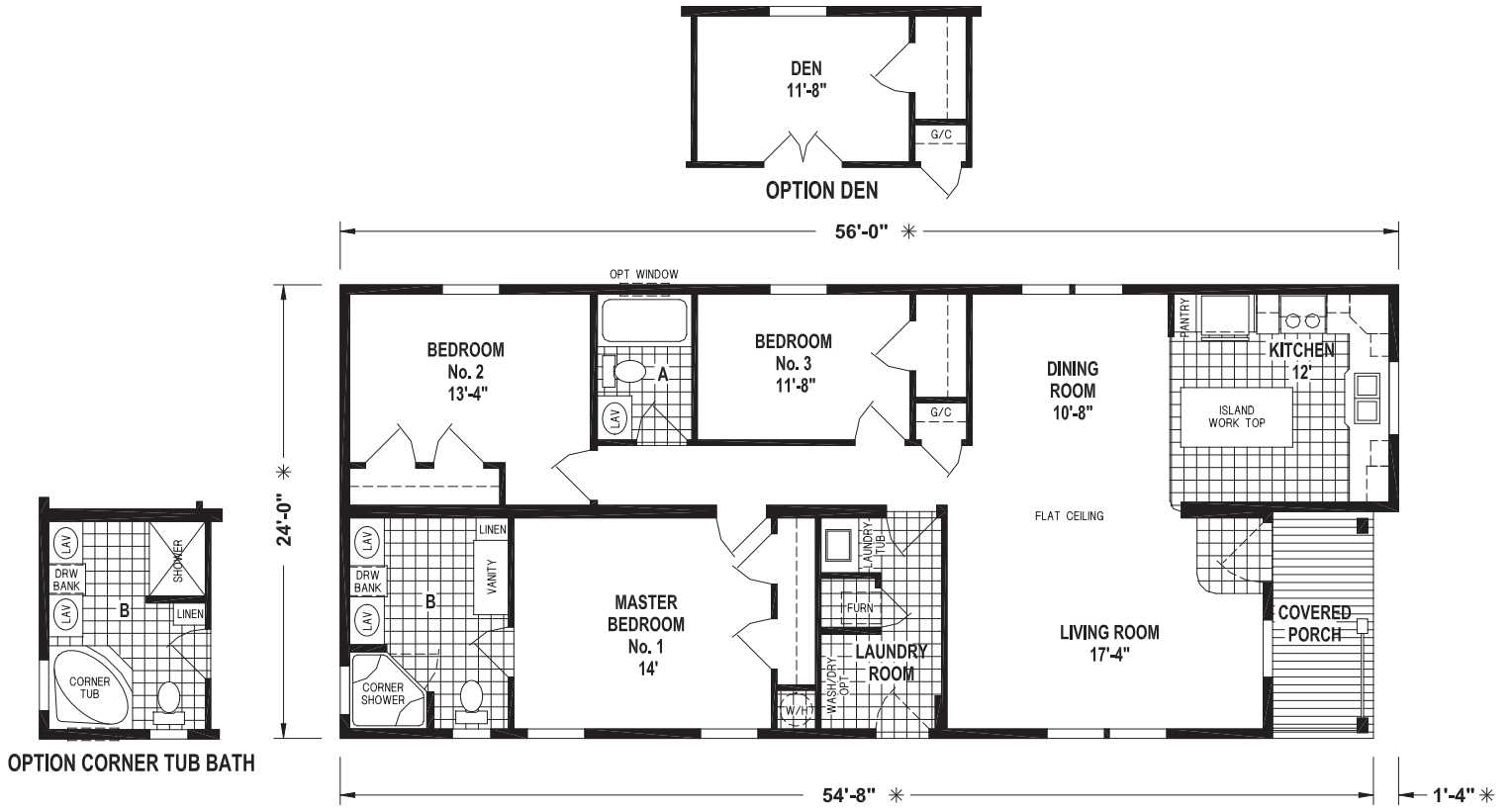
Your Local **Wood Manor** Dealer is:  
*Developer*



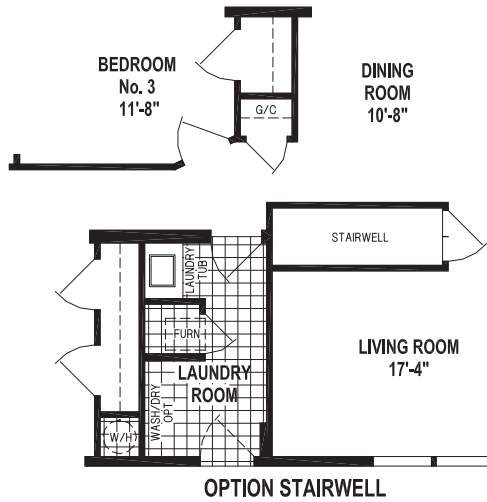
**SKYLINE**  
BRINGING AMERICA HOME. BRINGING AMERICA FUN.

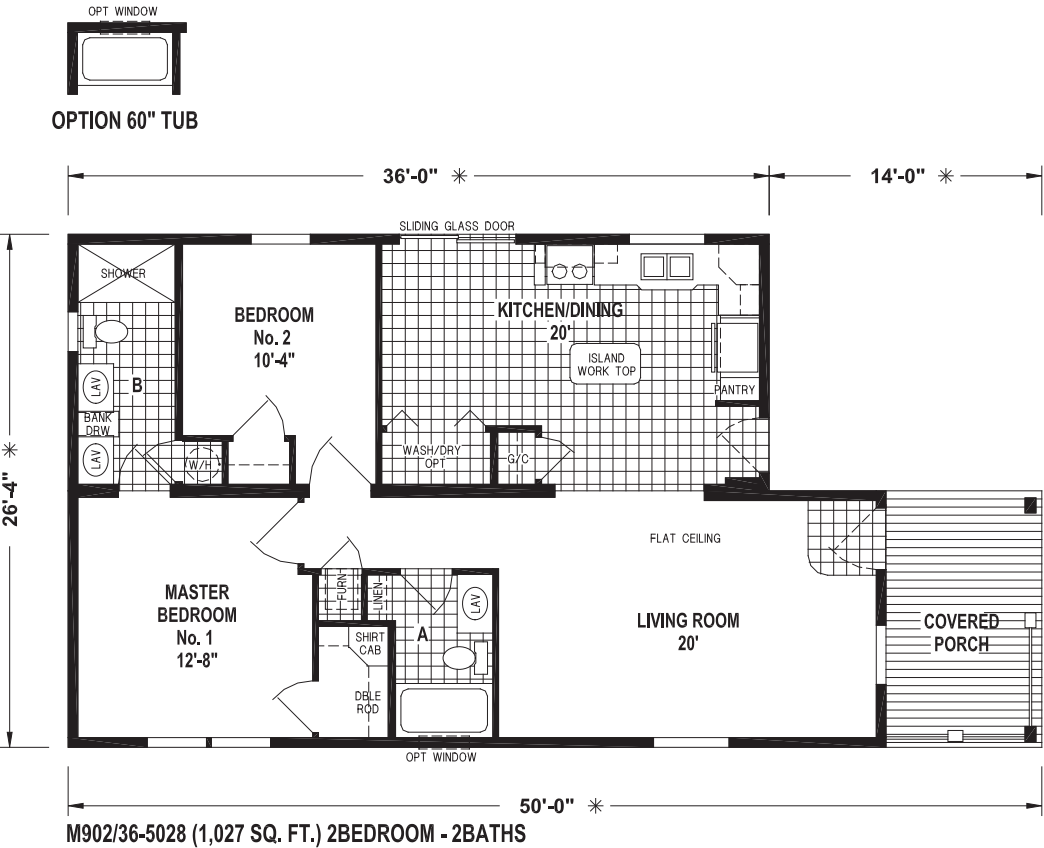


# 24 Series

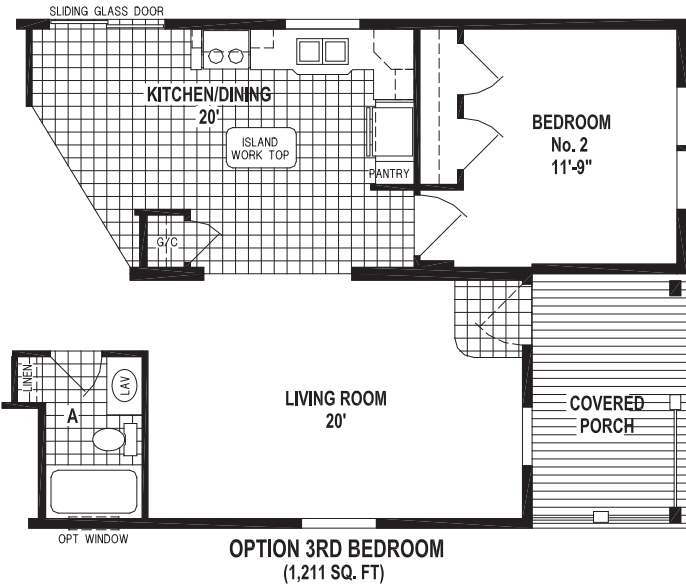


M370/5624 (1,264 SQ. FT.) 3BEDROOM - 2BATHS



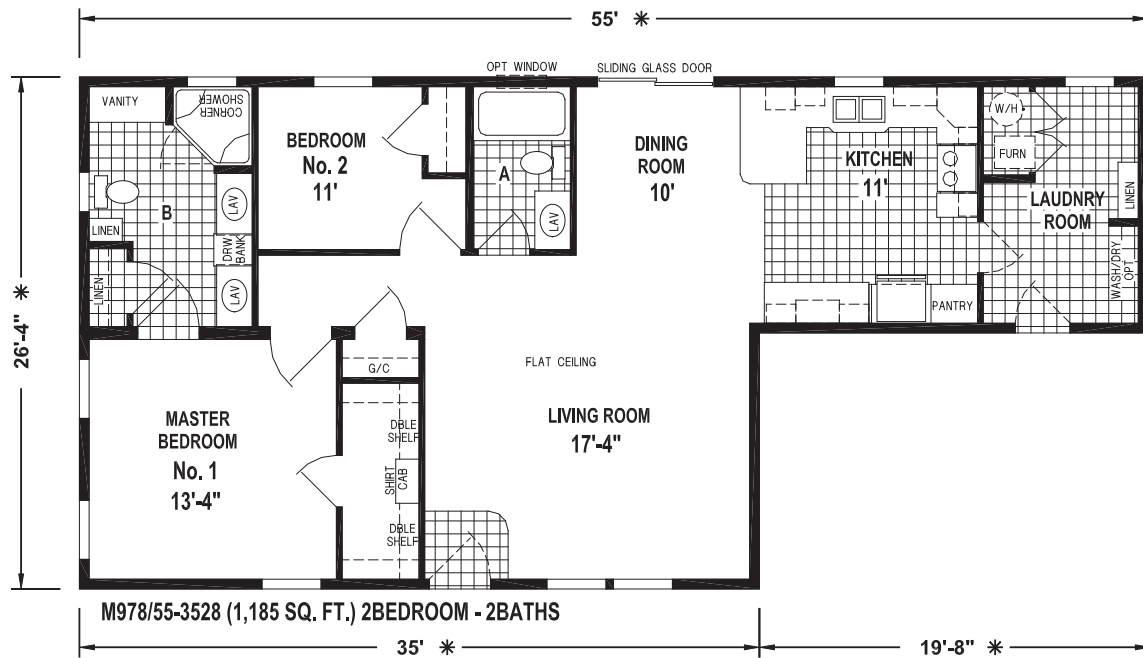


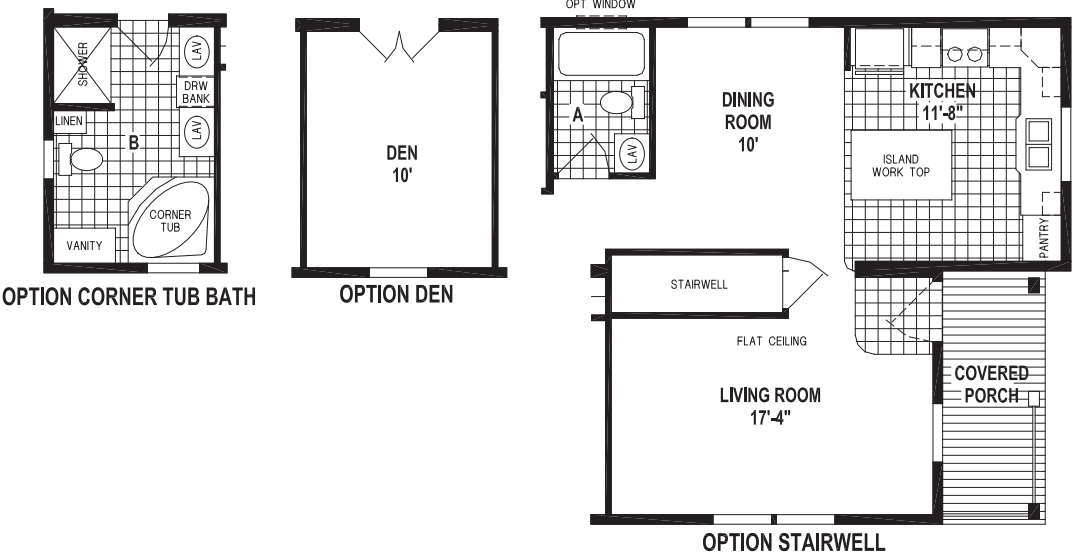
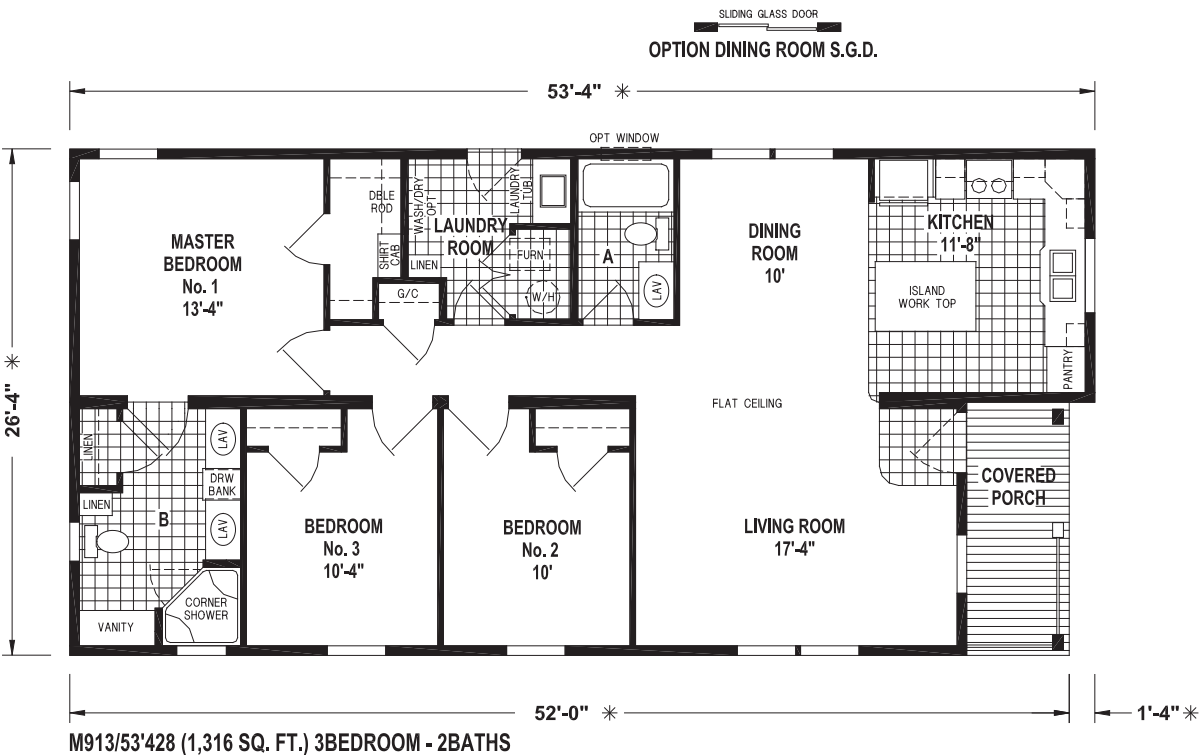
M902/36-5028 (1,027 SQ. FT.) 2BEDROOM - 2BATHS



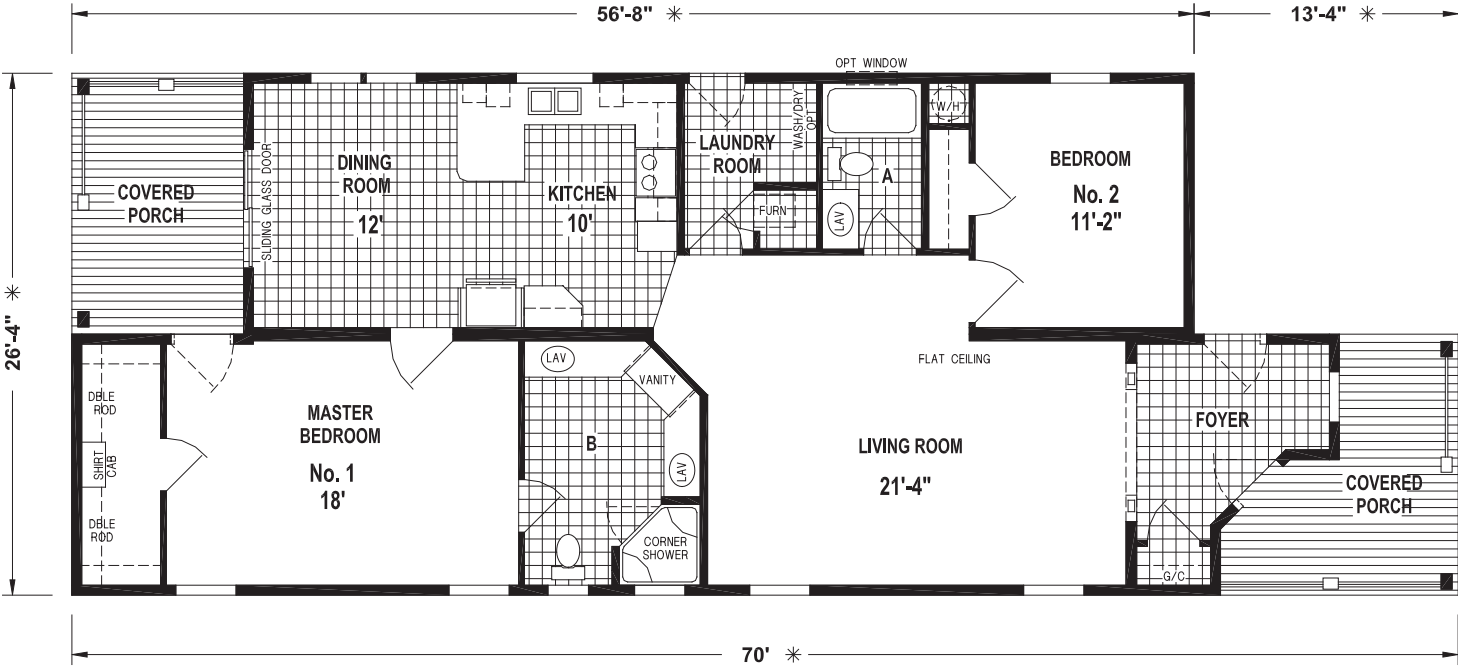
OPTION 3RD BEDROOM  
(1,211 SQ. FT)

# 28 Series

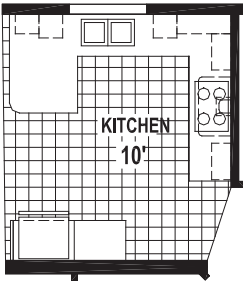




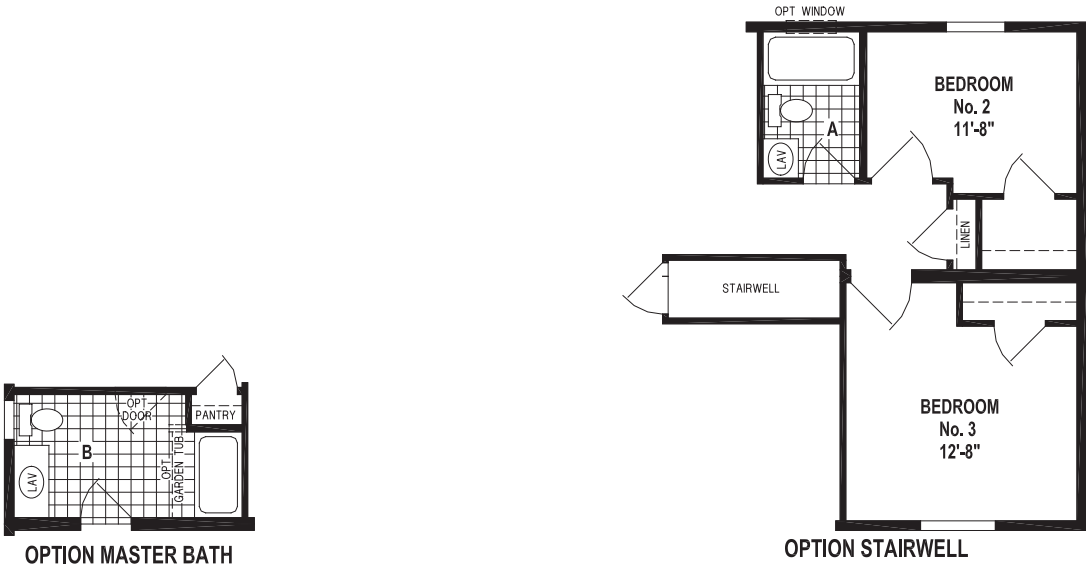
# 28 Series



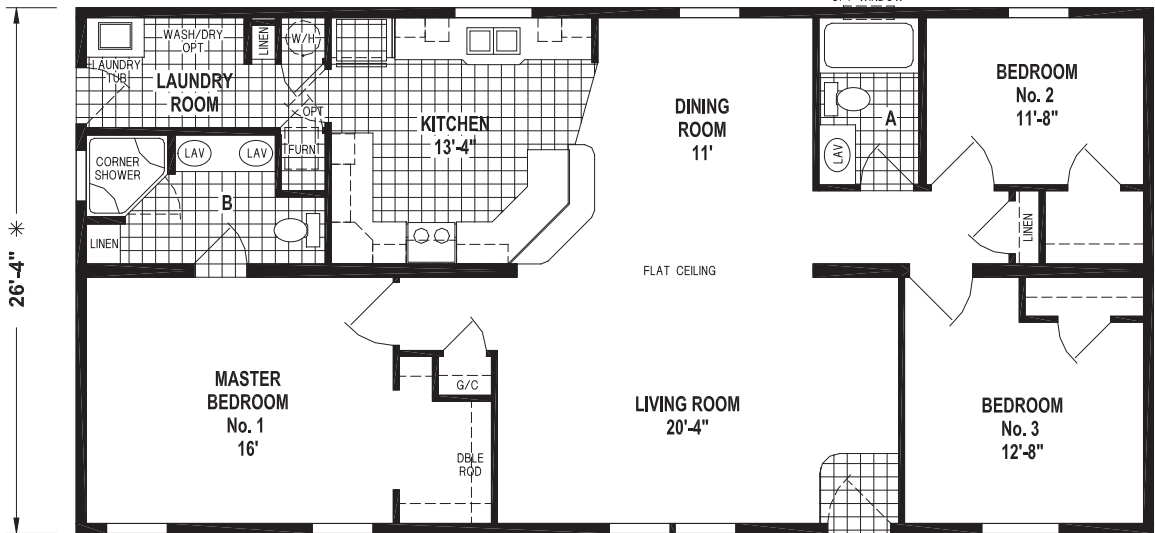
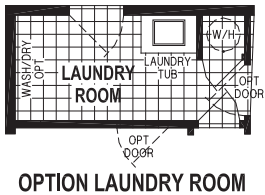
M988/56'8-70/28 (1406 SQ. FT.) 2BEDROOM - 2BATHS



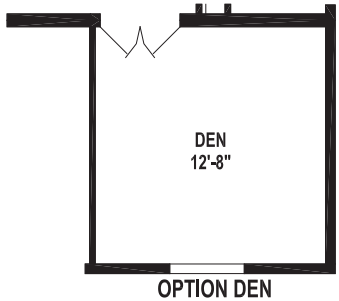
OPTION GOURMET KITCHEN



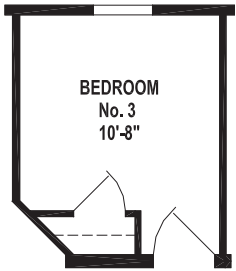
54'-0" \*



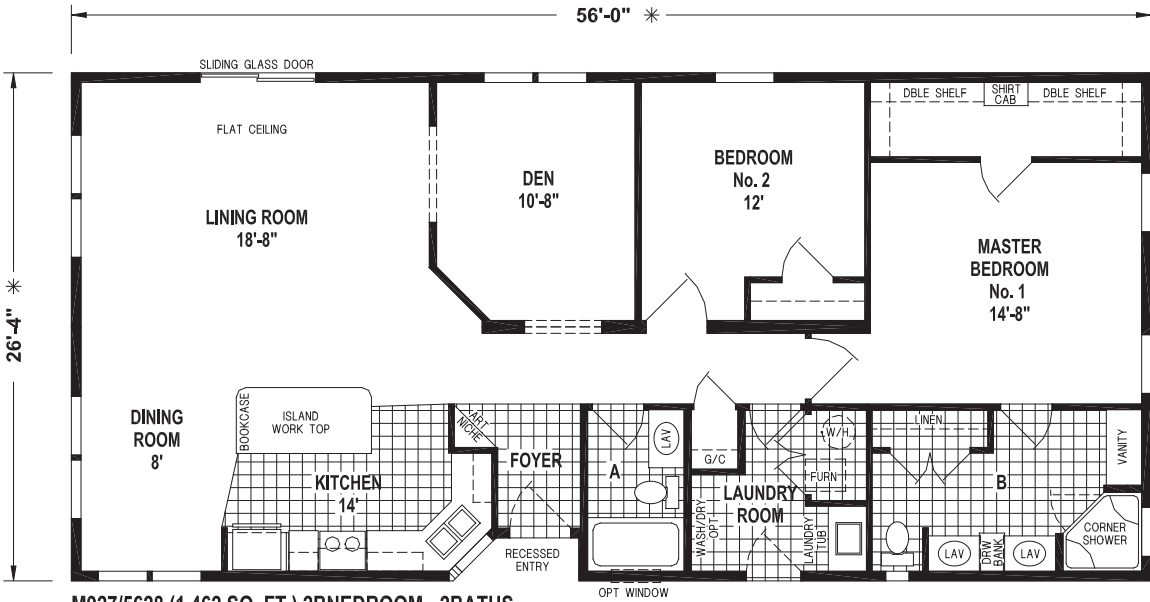
M922/5428 (1,422 SQ. FT.) 3BEDROOM - 2BATHS



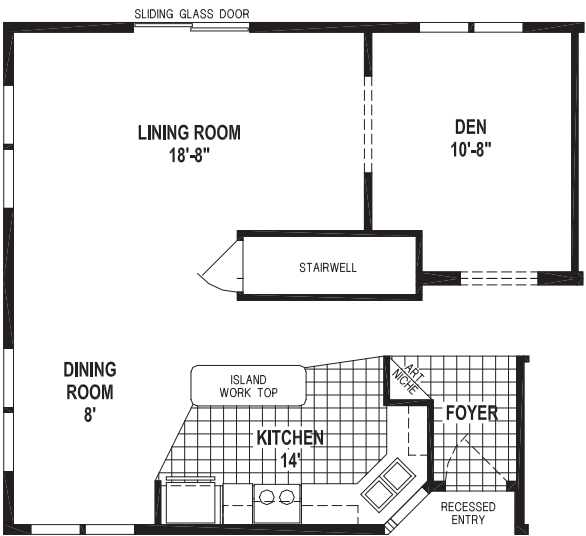




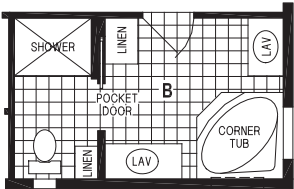
OPTION 3RD BEDROOM



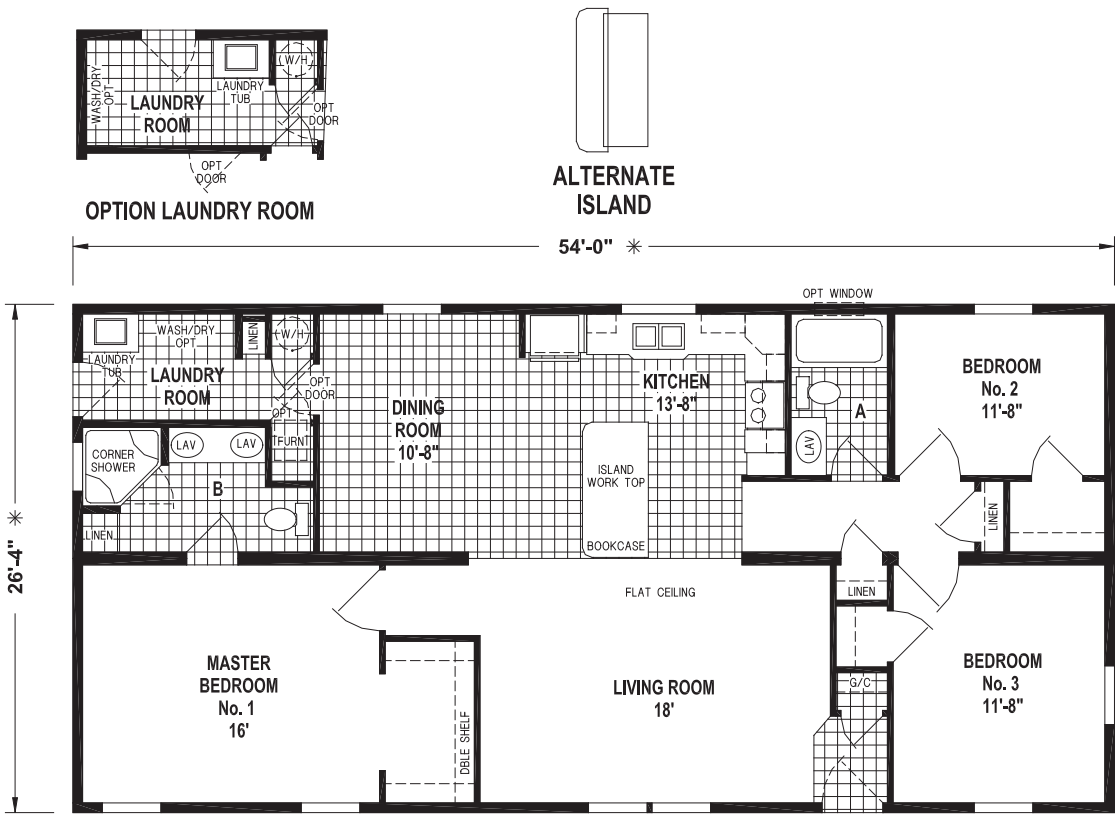
M927/5628 (1,462 SQ. FT.) 2BNEDROOM - 2BATHS



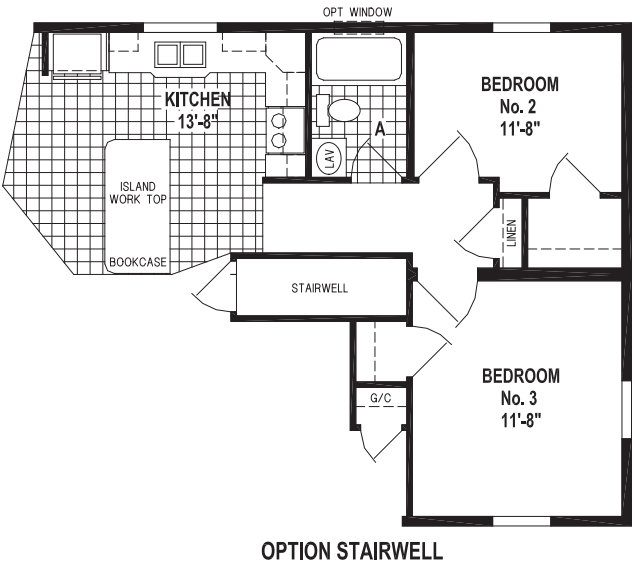
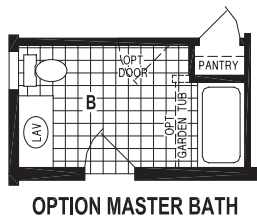
OPTION STAIRWELL



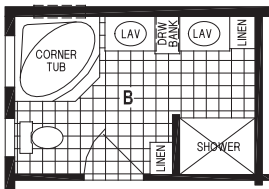
OPTION CORNER TUB BATH



M954/5428 (1,422 SQ. FT.) 3BEDROOM - 2BATHS



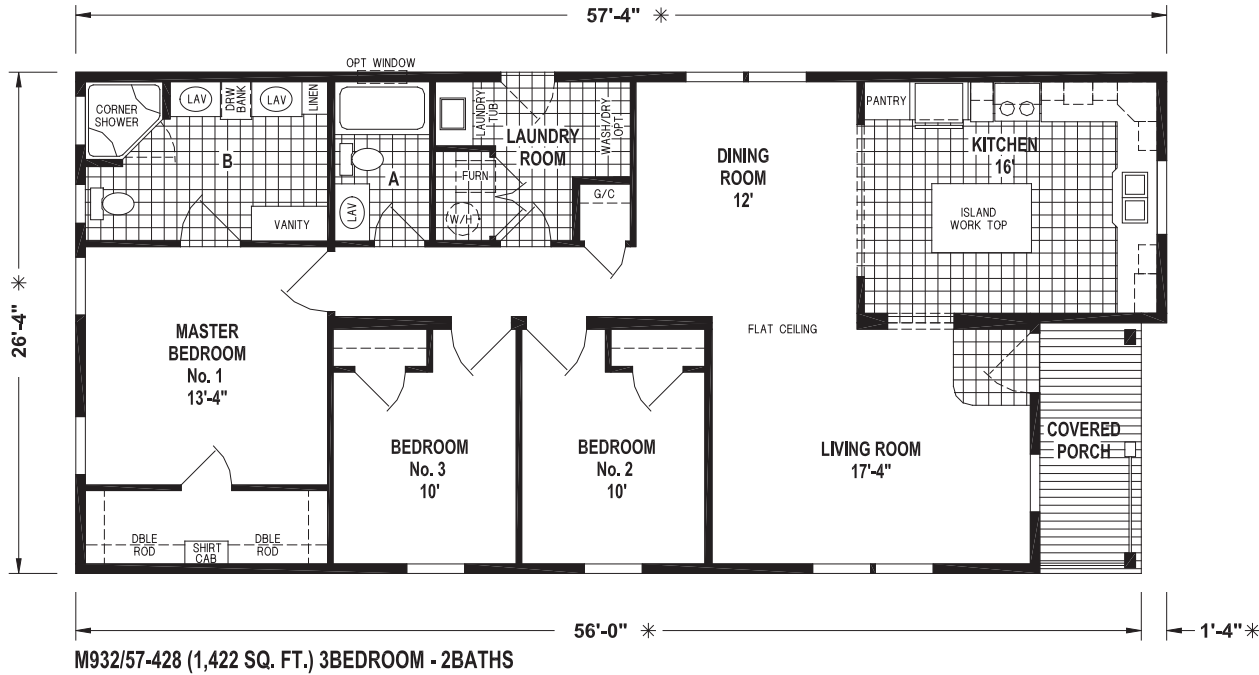
# 28 Series



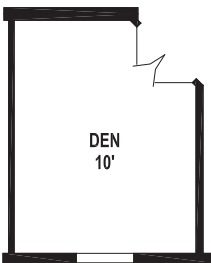
OPTION CORNER TUB BATH



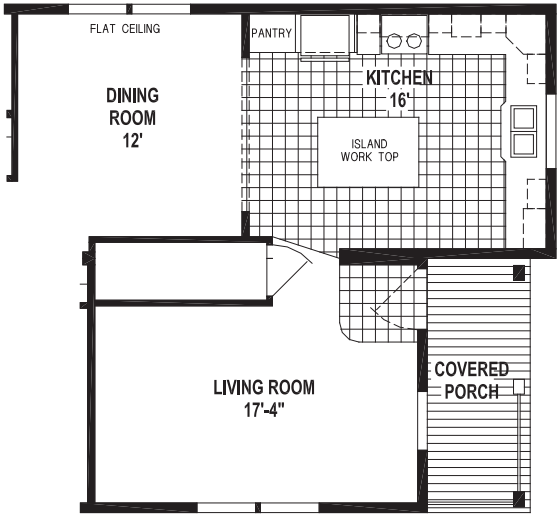
OPTION DINING ROOM S.G.D.



M932/57-428 (1,422 SQ. FT.) 3BEDROOM - 2BATHS



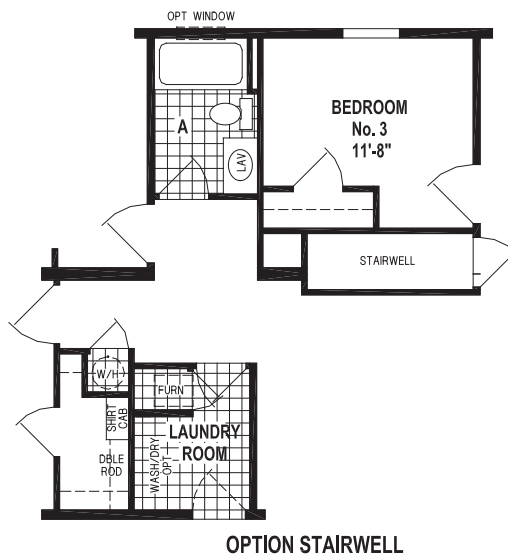
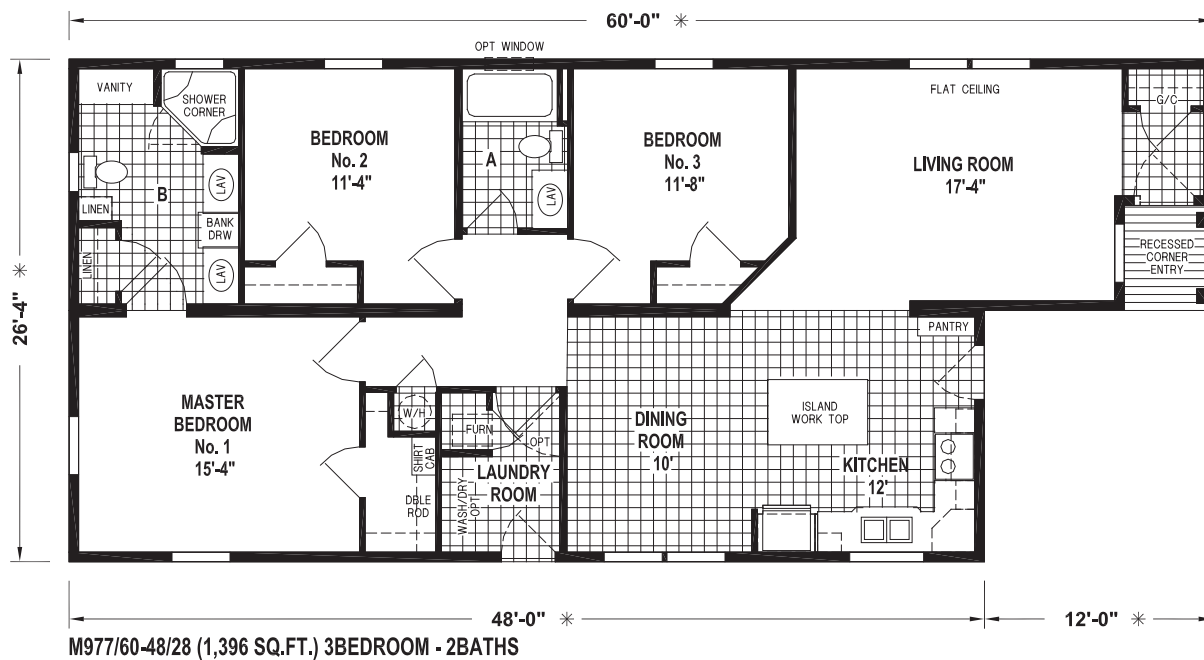
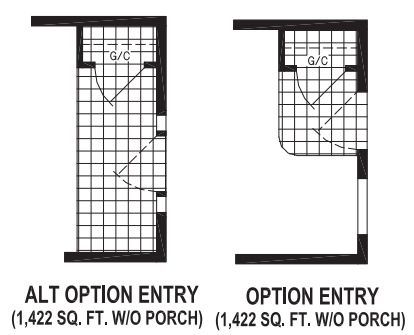
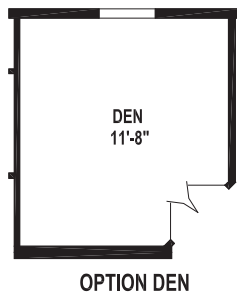
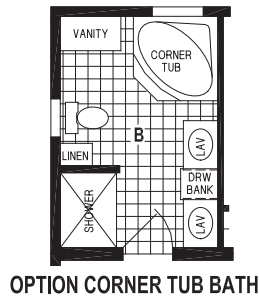
OPTION DEN

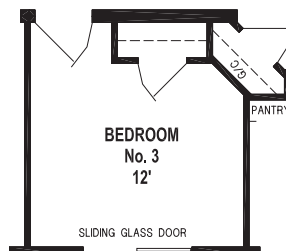
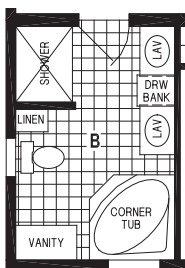
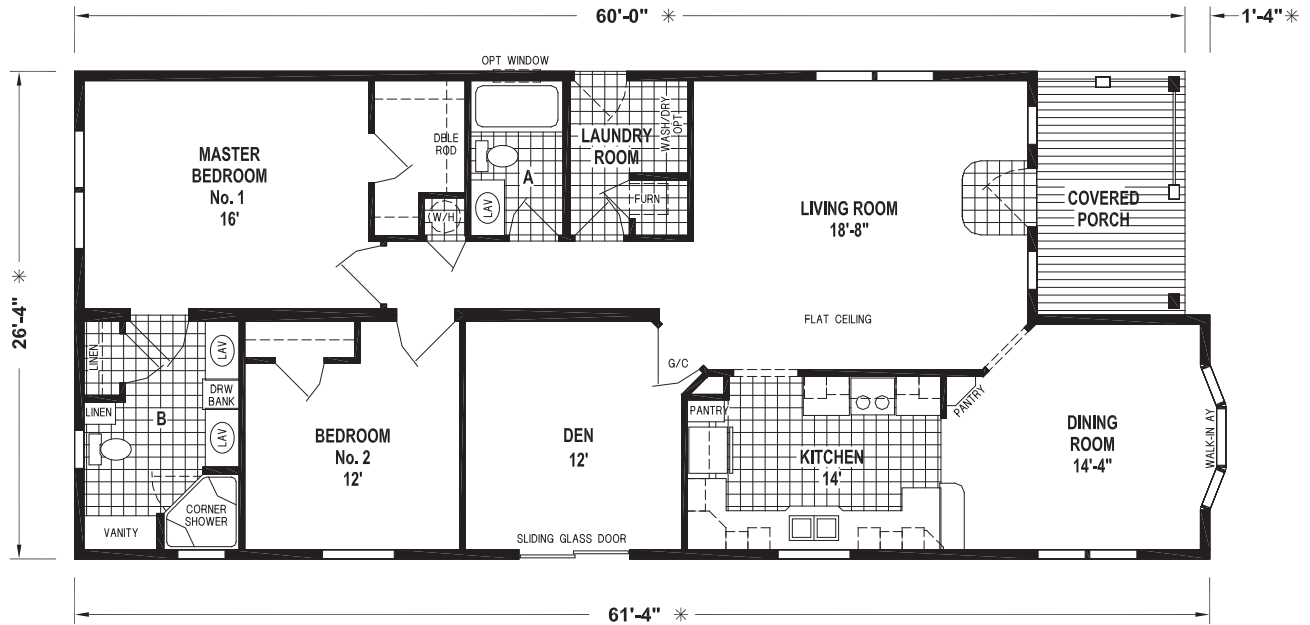
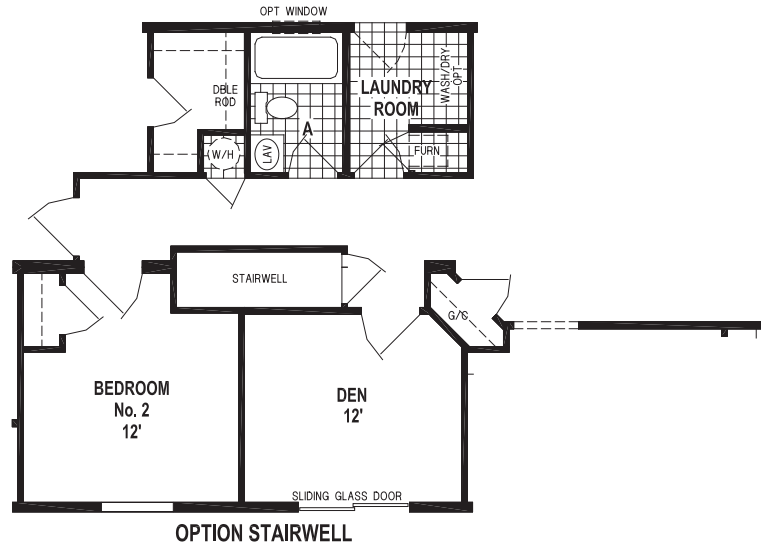


OPTION STAIRWELL



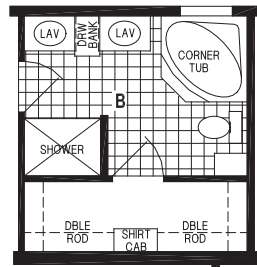
# 28 Series



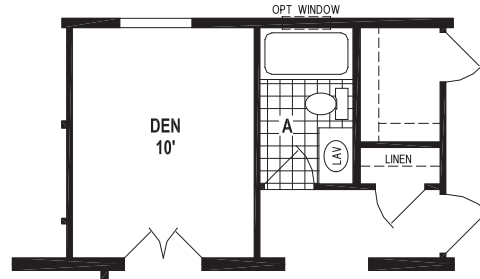


OPTION 3RD BEDROOM  
SLIDING GLASS DOOR  
REQUIRED W/3RD  
BEDROOM

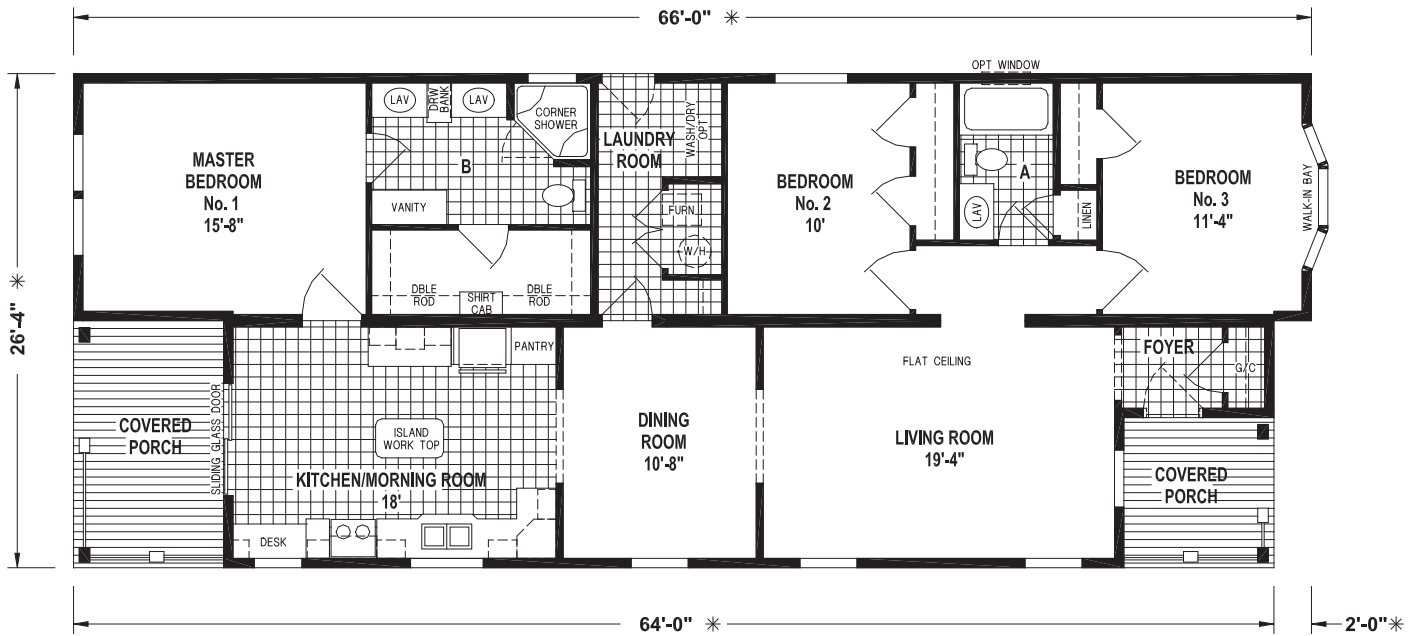
# 28 Series



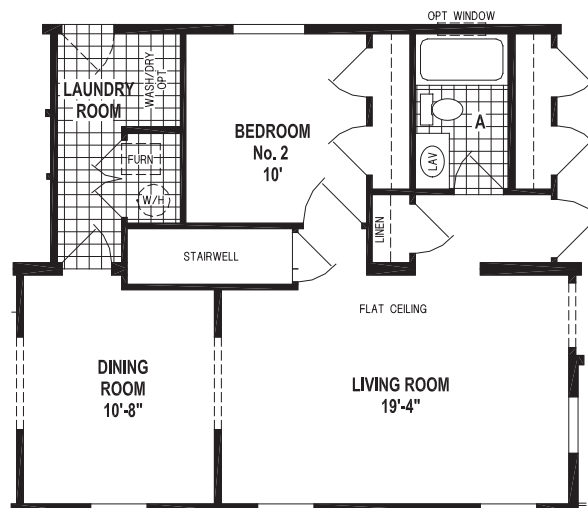
OPTION CORNER TUB BATH



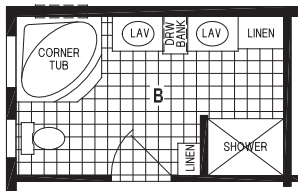
OPTION DEN  
(N/A @ OPT STAIRWELL)



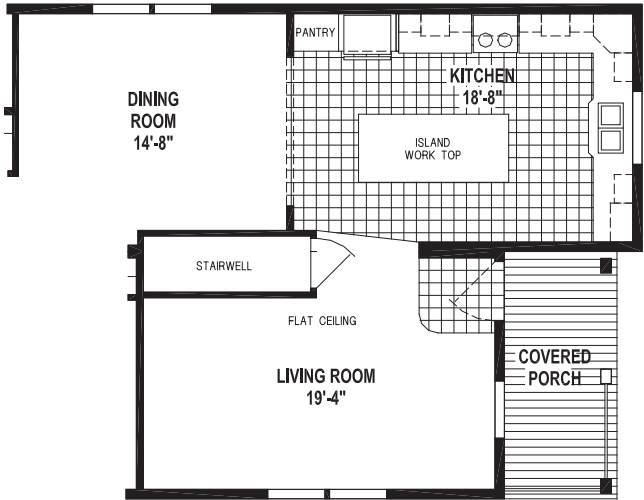
M936/66-6428 (1,547 SQ. FT.) 3BEDROOM - 2BATHS



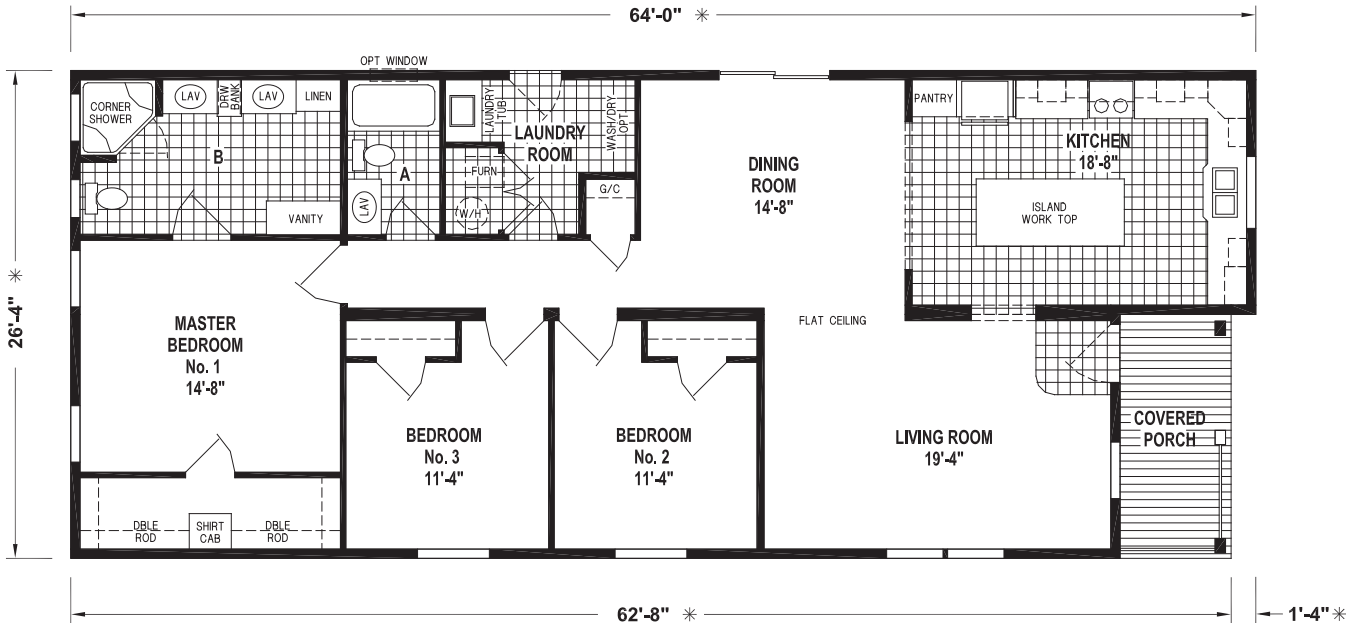
OPTION STAIRWELL



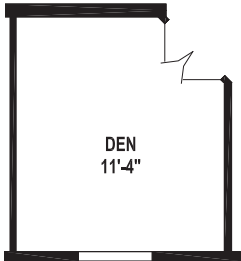
OPTION CORNER TUB BATH



OPTION STAIRWELL



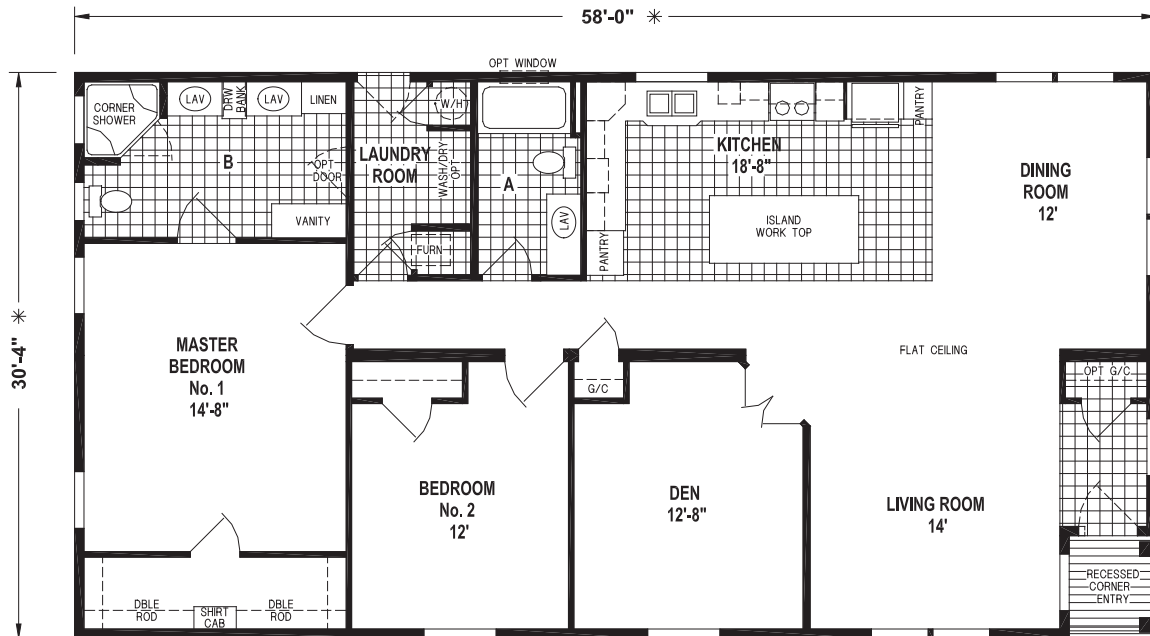
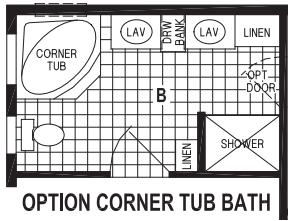
M925/64-62828 (1,588 SQ. FT.) 3BEDROOM - 2BATHS



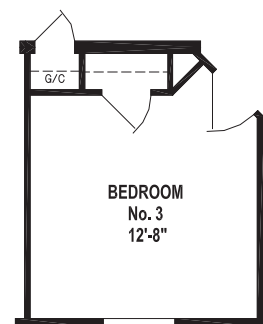
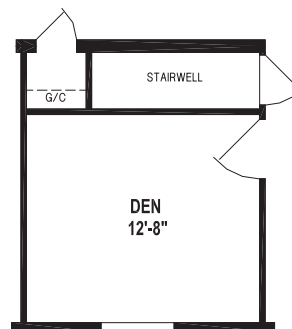
OPTION DEN



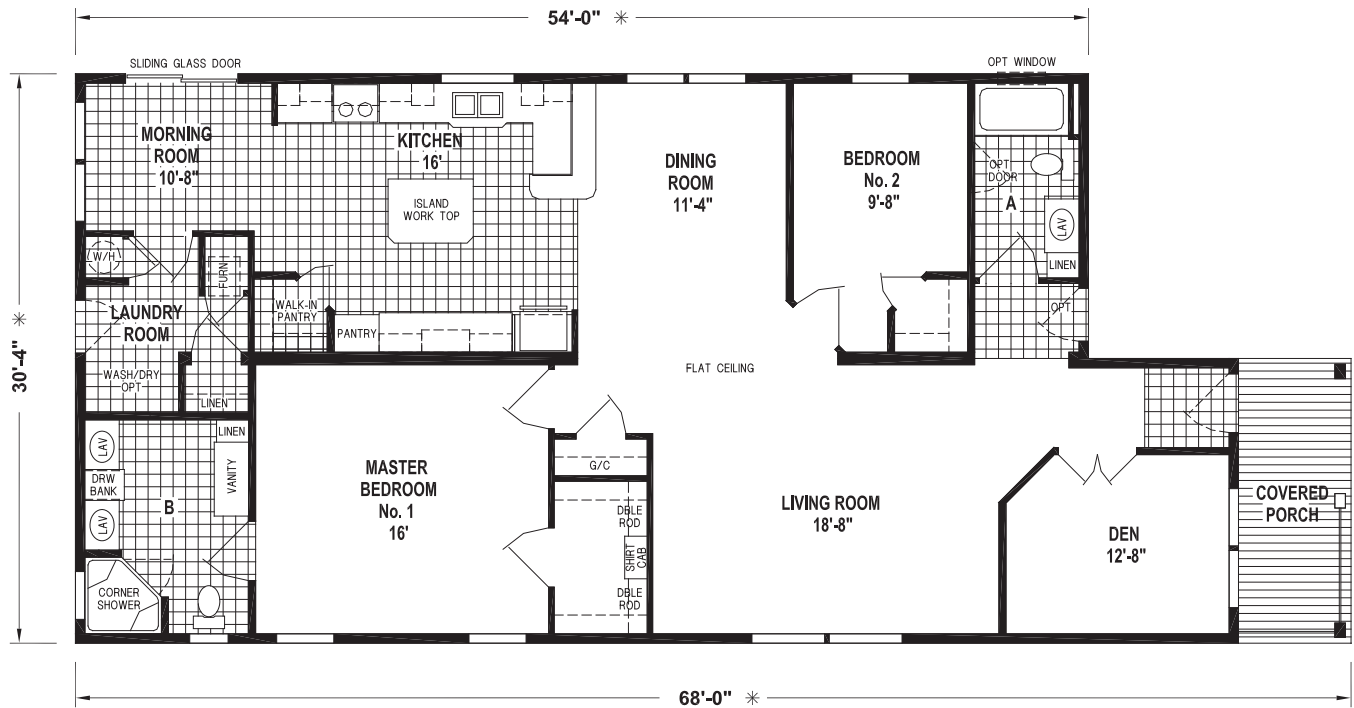
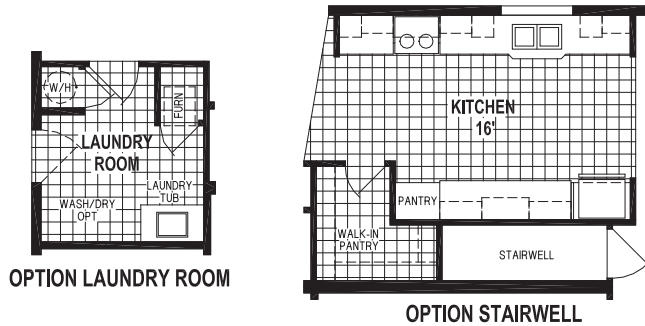
# 32 Series



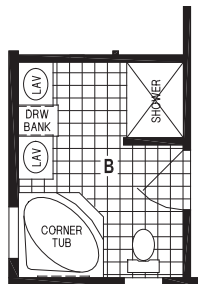
P821/5832 (1,733 SQ.FT.) 2BEDROOM - 2BATHS



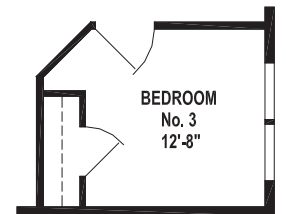
## 32 Series



**P823/54-6832 (1,759 SQ.FT.) 2BEDROOM - 2BATHS**



### OPTION CORNER TUB BATH



### OPTION 3RD BEDROOM

# Wood Manor

## Developer

### 24/28/32 Series

## Standard Features

#### LIVING AREAS

- Carpet w/Tack Strip
- Drapes w/1 1/2" Blinds
- Dining Light

#### KITCHEN

- Raised Panel Cherry, Oak, or White Cabinets w/ Residential Hidden Hinges
- Solid Wood Face Frames
- Soft Close Drawers
- Lined Overhead & Base Cabinets
- Adjustable Shelves
- Box Built Cabinets
- 2nd Shelf Kitchen Base
- Ceramic Tile Backsplash
- 8" Stainless Steel Sink w/Single Lever Faucet & Sprayer
- 18 cu. ft. Double Door Frost Free Refrigerator
- 30" Deluxe Range w/Lighted Power Hood
- Garbage Disposal
- Pantry w/Drawer Bank per Floor Plan
- Recessed Can Lights
- Valance w/1-1/2" Blinds
- Cabinet Above Refrigerator

#### BATHROOMS

- Raised Panel Cherry, Oak, or White Cabinets w/ Residential Hidden Hinges
- Solid Wood Face Frames
- Decorative Mirror
- Privacy Locks
- Power Vent Fan
- 1-Piece Fiberglass Tub/Shower Combo — Hall Bath
- China Sink w/Over Flow & Pop-Up Drain
- Single Lever Lav Faucets
- Elongated China Commodes
- Residential Raised Lav Base — Both Bath
- Single Lever Tub & Shower Diverters
- Ceramic Tile Backsplash
- Linen w/Drawer Bank Per Floor Plan
- 36 x 8 Window Where Applicable
- 24 x 40 Window Where Applicable
- Strip Lights
- Towel Bar & Tissue Holder

#### BEDROOMS

- Carpet w/Tack Strip
- Ventilated Wire Shelving
- Shirt Cabinet in Master Closet — per Floor Plan
- Ceiling Lights
- Full Drapes in Master Bedroom
- Mini Blinds in Guest Bedroom

#### ADDITIONAL FEATURES

- Energy Star
- 8'-0" Sidewall Height
- Flat Ceiling Throughout
- Tape Ceiling Wall Joint
- 2 x 6 Sidewalls, 16 O.C.
- Shingle Roof w/Ridge Vent
- 5/12 Roof Pitch
- 30 Year Architectural Shingles
- 30 Lb. Roof
- Hip Roof Over Porch — Per Floor Plan
- Vinyl Double 4 Lap Siding
- 3/8" OSB Siding Underlayment
- Tile at Entry
- 1/2" Tape & Textured Drywall Throughout
- White Molding Package
- Carpet Pad
- Carpet in Hall
- Pre-finished Door Jambs
- Lever Latch Door Handles
- Gas Furnace w/Wood Door
- 50 Gal. Electric Water Heater
- PEX Water Lines
- Water Shut Off Valves at All Fixtures
- Plumb for Washer
- Wire for Dryer
- Overhead Cabinet in Laundry Room
- Laundry Tub in Laundry Room — per Floor Plan
- Smooth Fiberglass Front Door w/Designer Etched Glass
- Smooth Fiberglass 9-Lite Rear Door
- Deadbolt Front & Rear Door
- Single-Hung Windows
- Insulated Vinyl Windows w/Low "E" Glass
- Window Grids
- Egress Windows in Bedrooms
- 15" Raised Panel Shutters at All Windows
- 200 Amp Service Entrance
- 2 x 6 Floor Joists, 16" O.C. (24 & 28 Series)
- 2 x 8 Floor Joists, 16" O.C. (32 Series)
- Graduated Fiberglass Heat Duct
- Perimeter Heating w/Baseboard Registers
- Toekick Registers at Kitchen & Bathrooms
- Copper Wiring
- CO<sub>2</sub>/Smoke Detector w/Battery Backup & False Alarm Control
- Wireless Door Chime
- Exterior Receptacle w/GFI Breaker
- Exterior Frost-Free Faucet
- Electrical Breaker Box
- Code Insulation
- Exterior Light at All Exterior Doors
- Iron Gas Piping w/Shut-off Valves

**SKYLINE**  
BRINGING AMERICA HOME. BRINGING AMERICA FUN.



For your comfort and safety, Skyline home designs are approved and inspected for conformance to Federal standards.

\* Dimensions stated to industry standards. Width and length dimensions are nominal and are not to be used for setup of home on site; consult selling retailers for exact specifications. Overall length does not include approximately four foot hitch. The square footage is approximate and based upon nominal exterior floor size. Room sizes are measured from floor ends and wall centers.

Because of progressive product improvement, all prices & specifications are subject to change without prior notice or obligation to Skyline Corporation.

Your Retailer, an independent contractor, who is not an agent of Skyline Corporation, is the party responsible for your purchase contract and any additions, deletions, alterations, or attachments made to or in your home.



**SKYLINE**<sup>®</sup>  
BRINGING AMERICA HOME. BRINGING AMERICA FUN.

Visit us at our web site at [www.skylinecorp.com](http://www.skylinecorp.com)