



# Sunwood

24' AND 28' SERIES FLOOR PLANS



**SKYLINE**

BRINGING AMERICA HOME. BRINGING AMERICA FUN.

LEOLA, PENNSYLVANIA



**NAHB**  
NATIONAL ASSOCIATION  
OF HOME BUILDERS

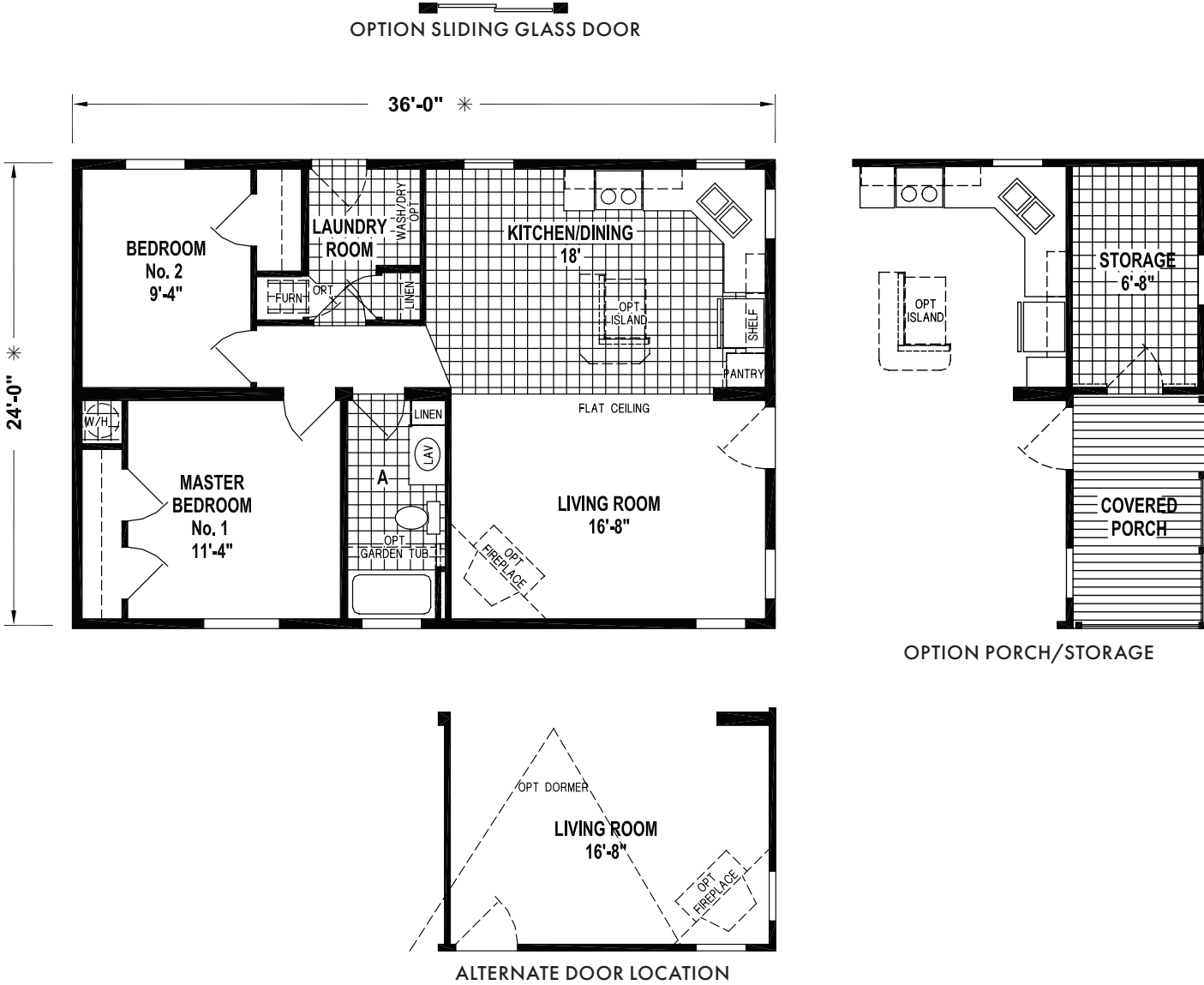
24' SERIES

# Sunwood

## 24' AND 28' SERIES FLOOR PLANS

F482CTJ

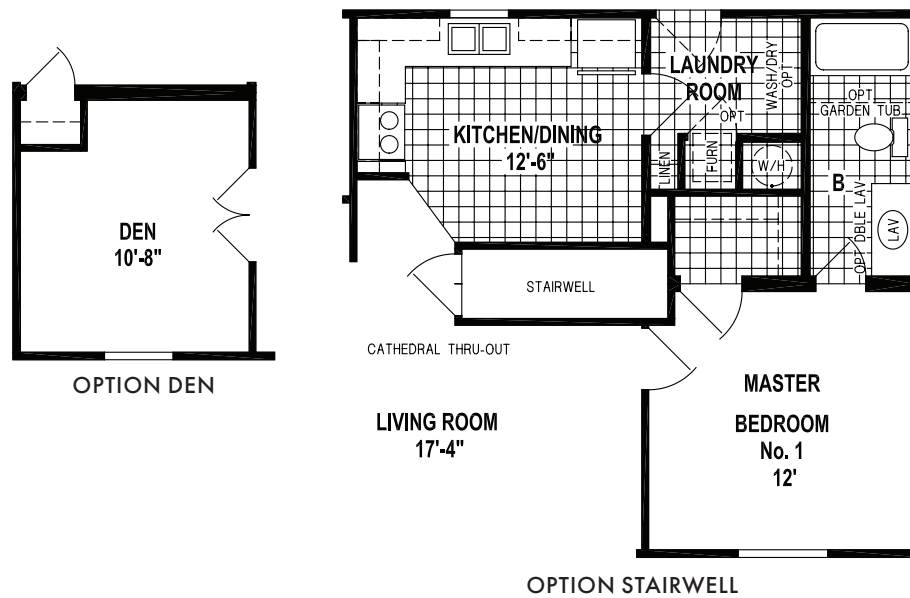
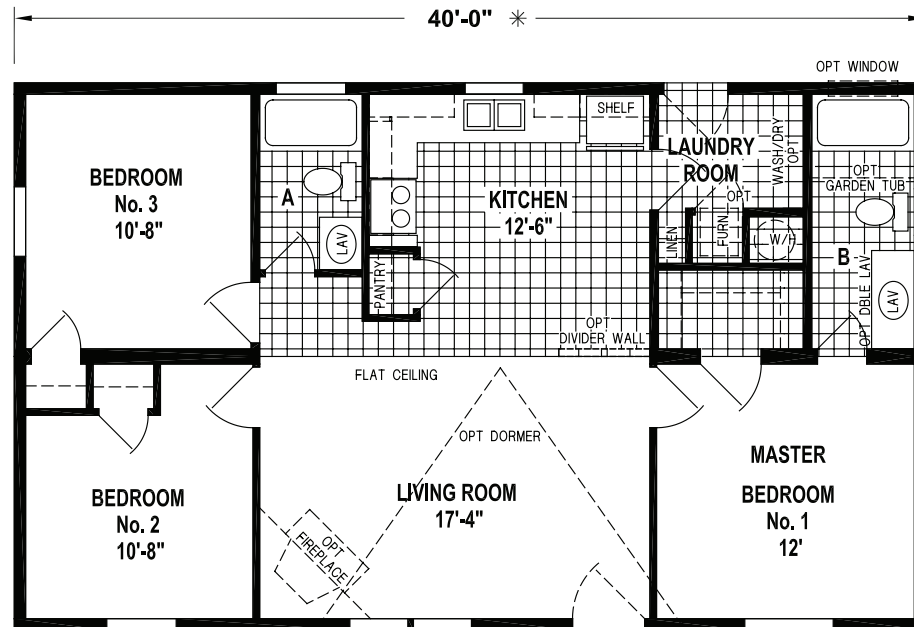
36' x 24' – 864 SQ. FT. – 2 BEDROOMS – 1 BATH





## B704CTJ

40' x 24' – 960 SQ. FT. – 3 BEDROOMS – 2 BATHS

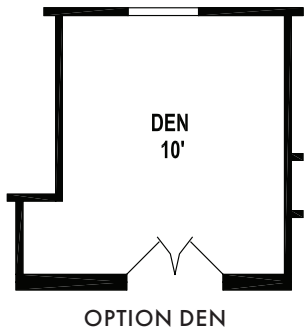
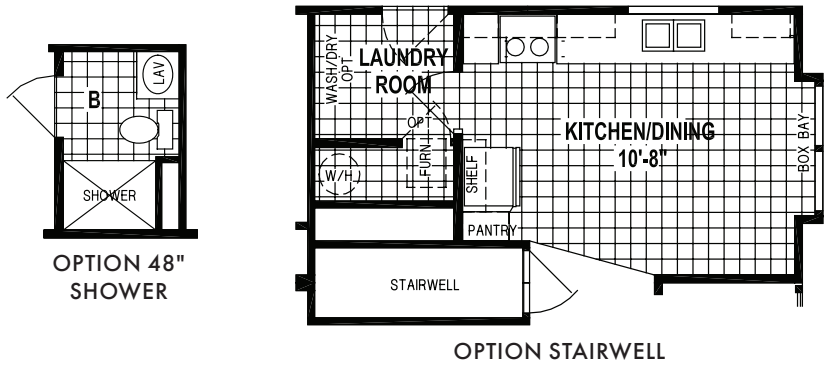
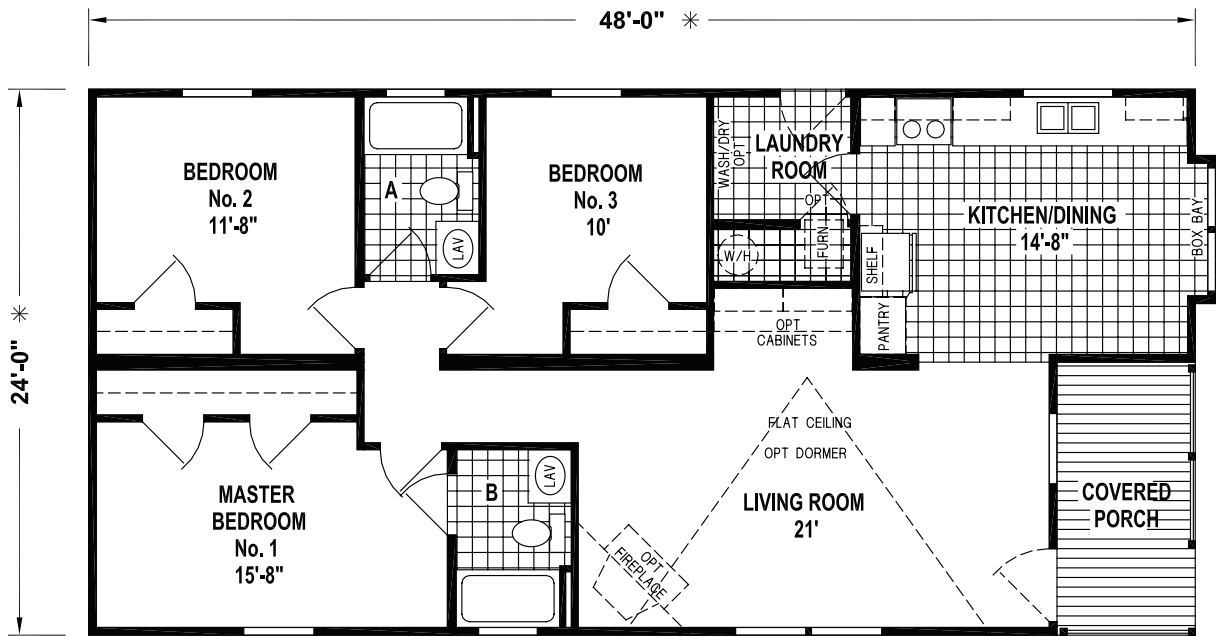


*The Sunwood series has been designed to reflect the needs of families through high-end craftsmanship and quality – with affordable amenities and distinctive design details. Manufactured in Leola, Pennsylvania and backed by over 65 years of manufacturing experience, a 15-month warranty and stellar customer service – take a look for yourself to see why the Sunwood series by Skyline Homes is the right decision for you and your family.*

24' SERIES

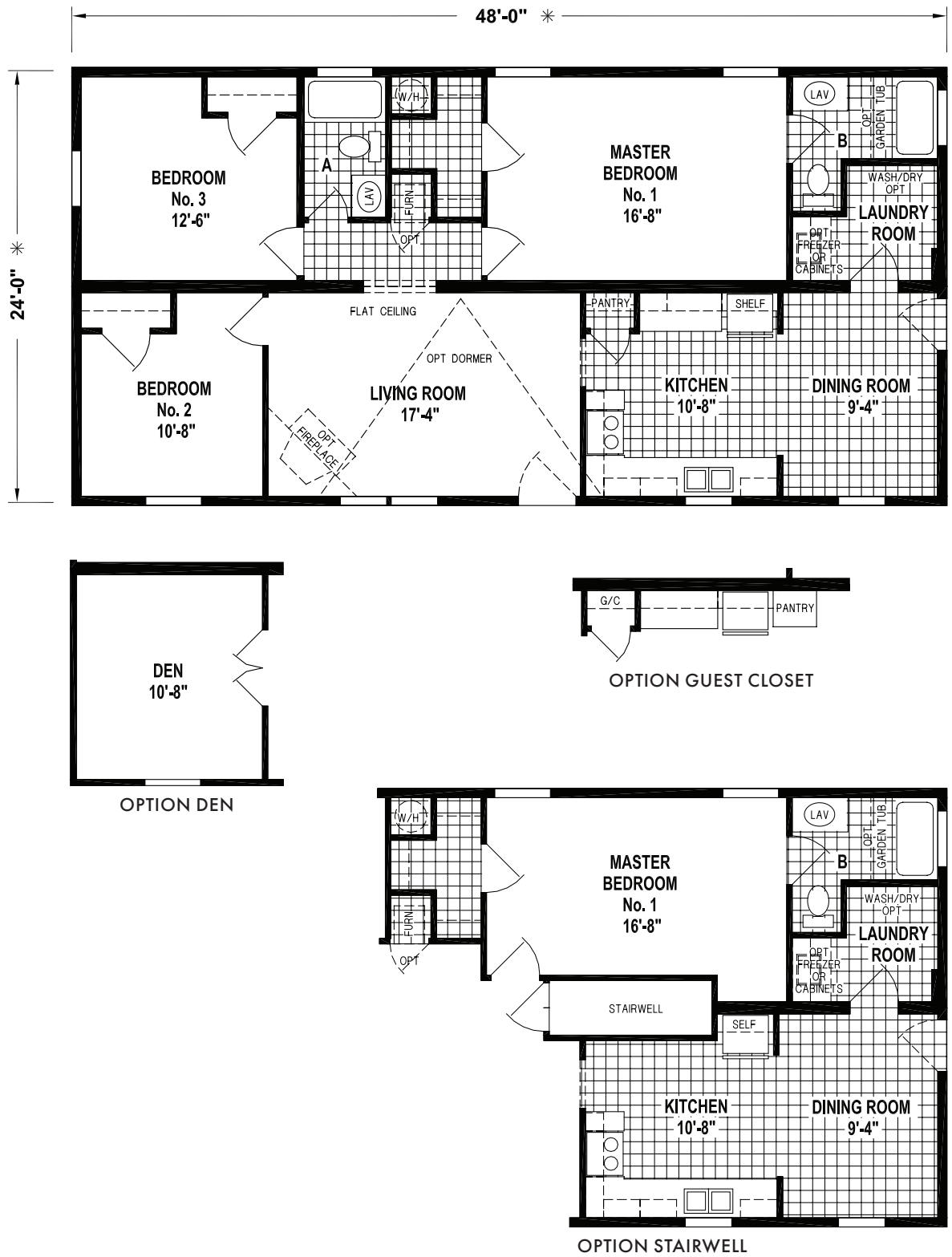
F472CTJ

48' x 24' – 1,085 SQ. FT. – 3 BEDROOMS – 2 BATHS



B705CJT

48' x 24' – 1,152 SQ. FT. – 3 BEDROOMS – 2 BATHS

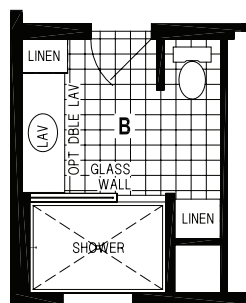
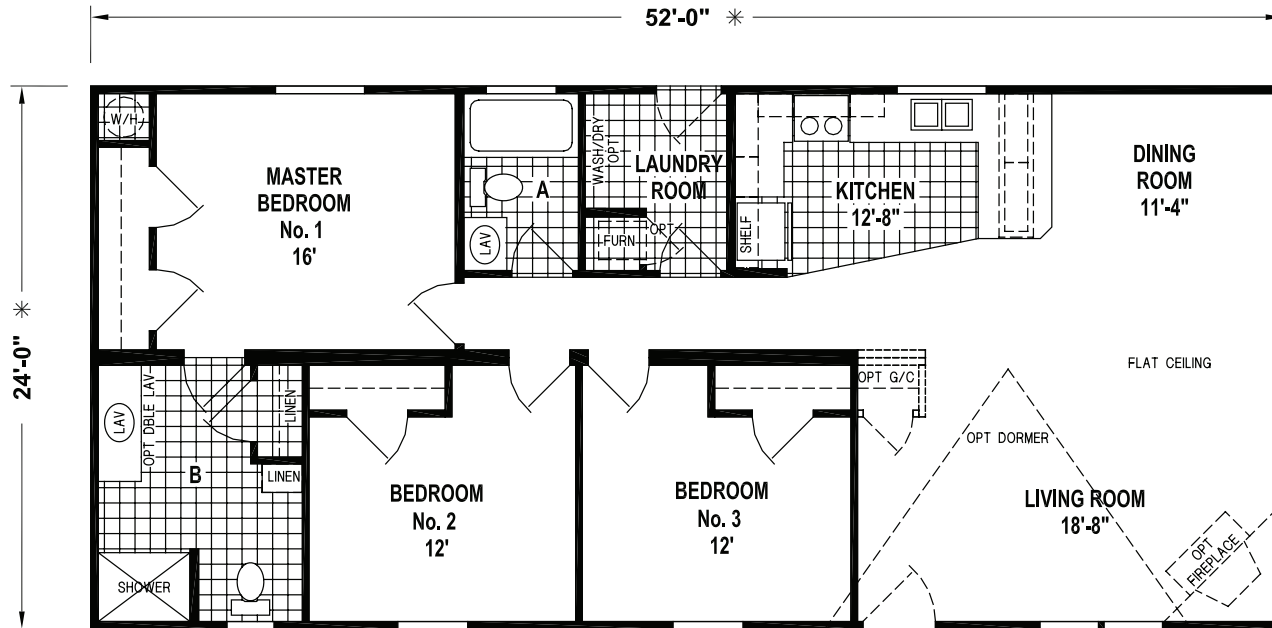


# 24' SERIES

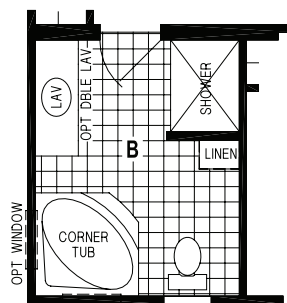
B773CTJ

52' x 24' – 1,248 SQ. FT. – 3 BEDROOMS – 2 BATHS

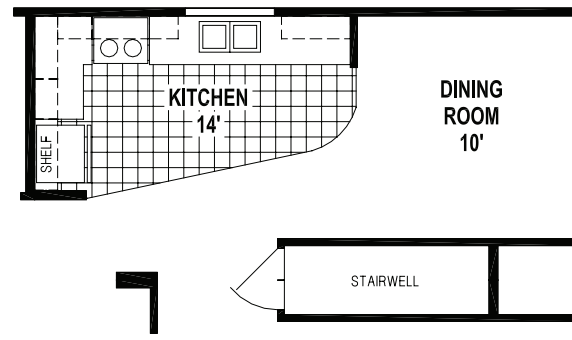
OPTION SLIDING GLASS DOOR



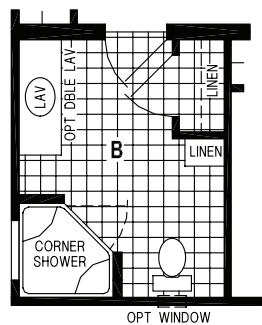
OPTION WALK-IN SHOWER BATH



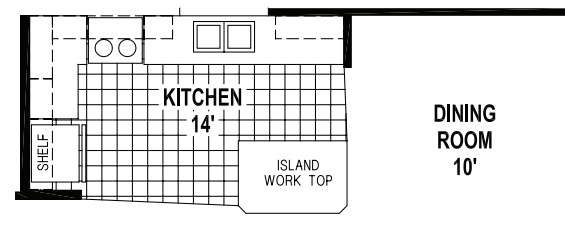
OPTION CORNER TUB BATH



OPTION STAIRWELL



OPTION CORNER SHOWER BATH

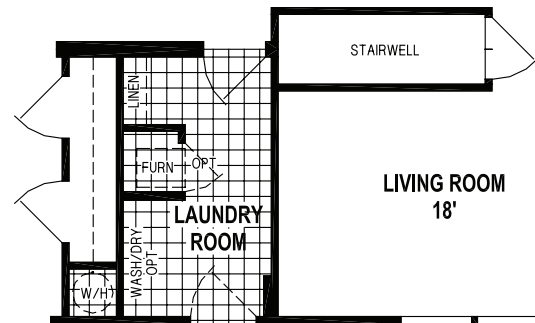
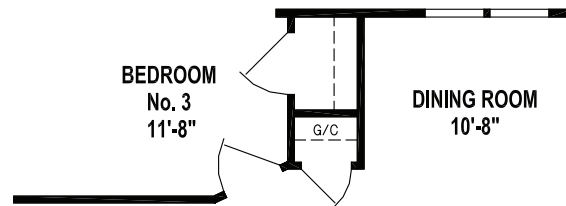
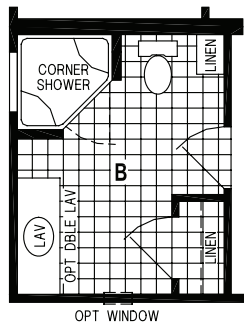
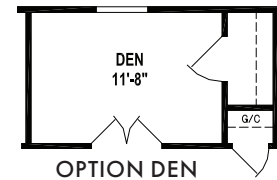
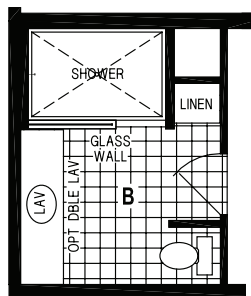
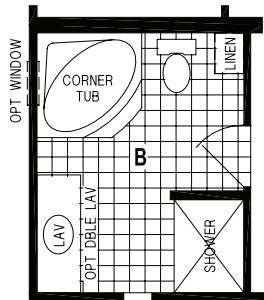
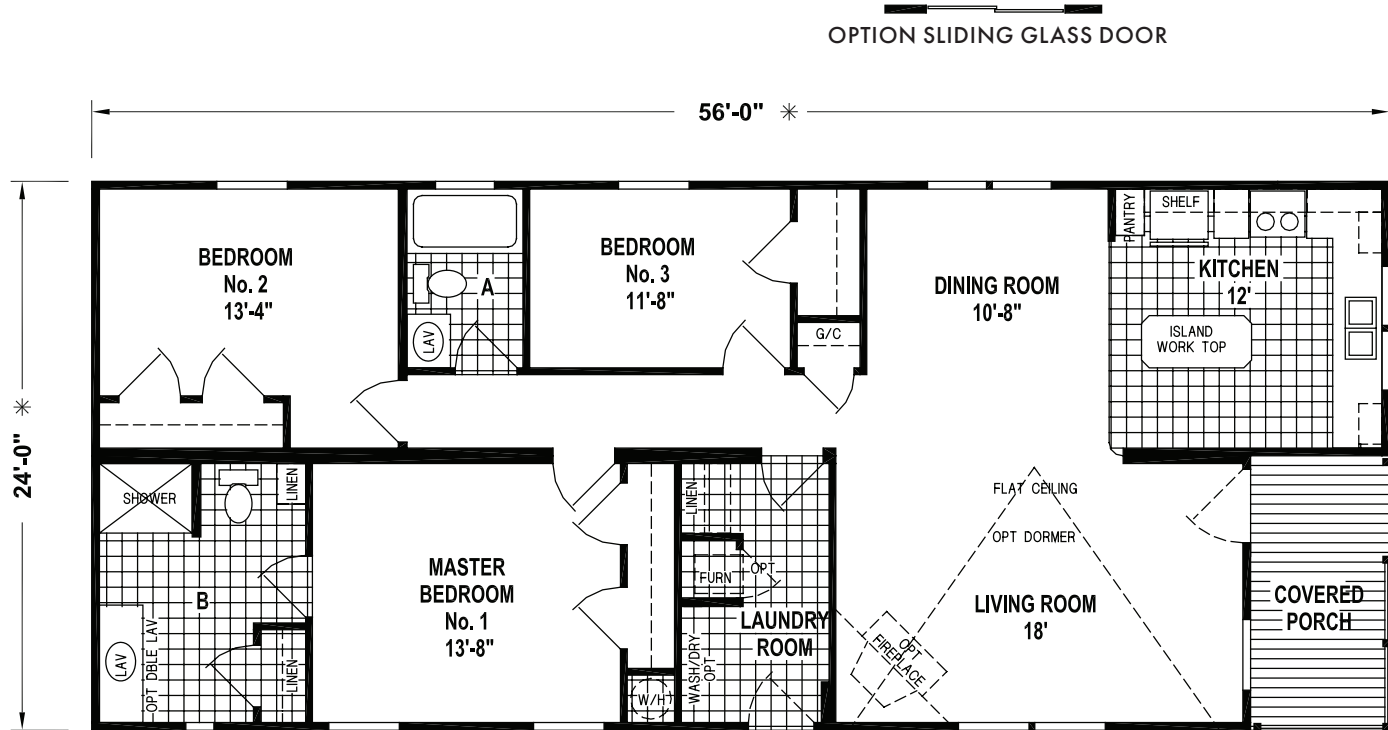


OPTION KITCHEN

# 24' SERIES

B770CTJ

56' x 24' – 1,272 SQ. FT. – 3 BEDROOMS – 2 BATHS

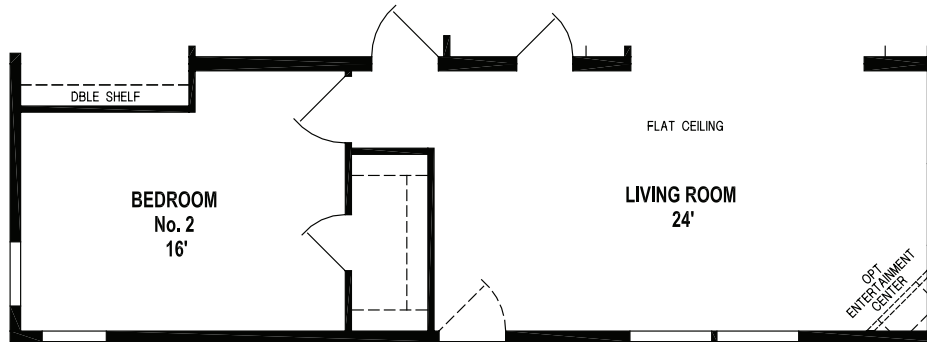
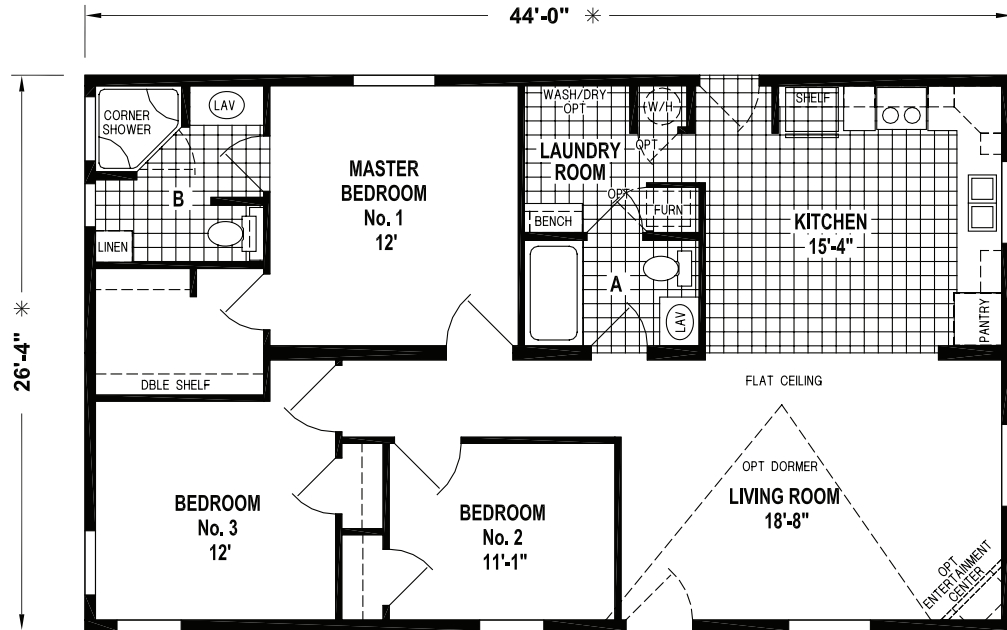


OPTION STAIRWELL

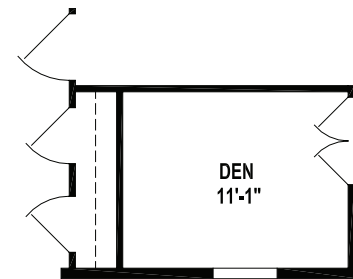
# 28' SERIES

F500

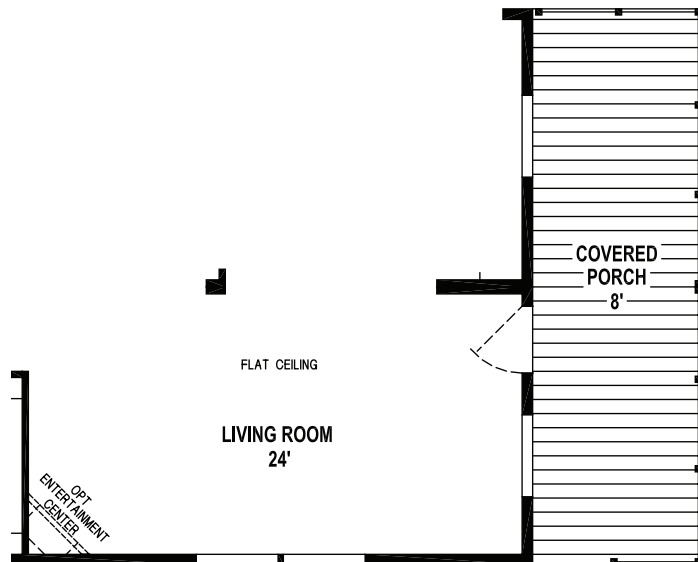
44' x 28' – 1,158 SQ. FT. – 3 BEDROOMS – 2 BATHS



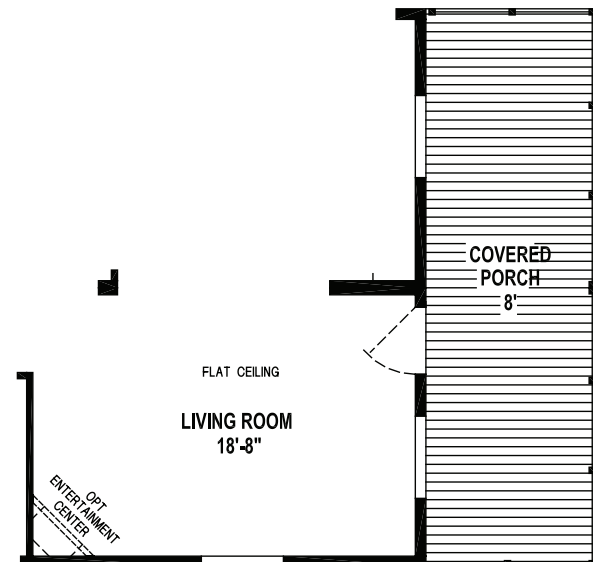
OPTION TWO BEDROOM CONFIGURATION



OPTION DEN



OPTION PORCH/ALTERNATE ENTRY WITH OPTION TWO BEDROOM



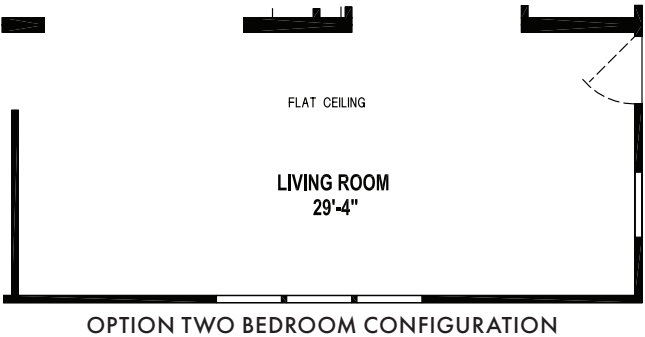
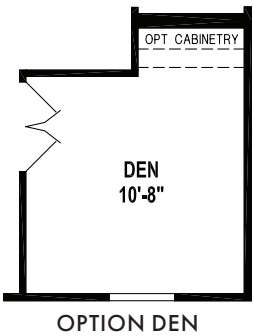
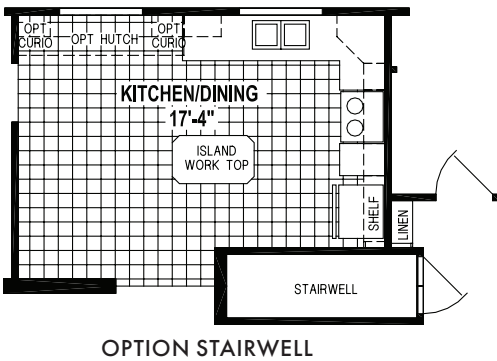
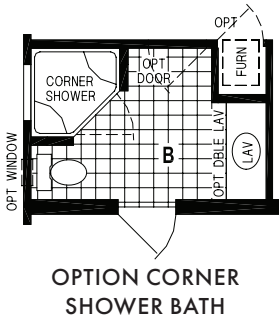
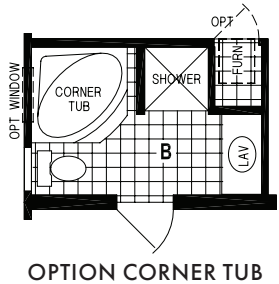
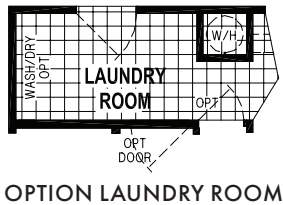
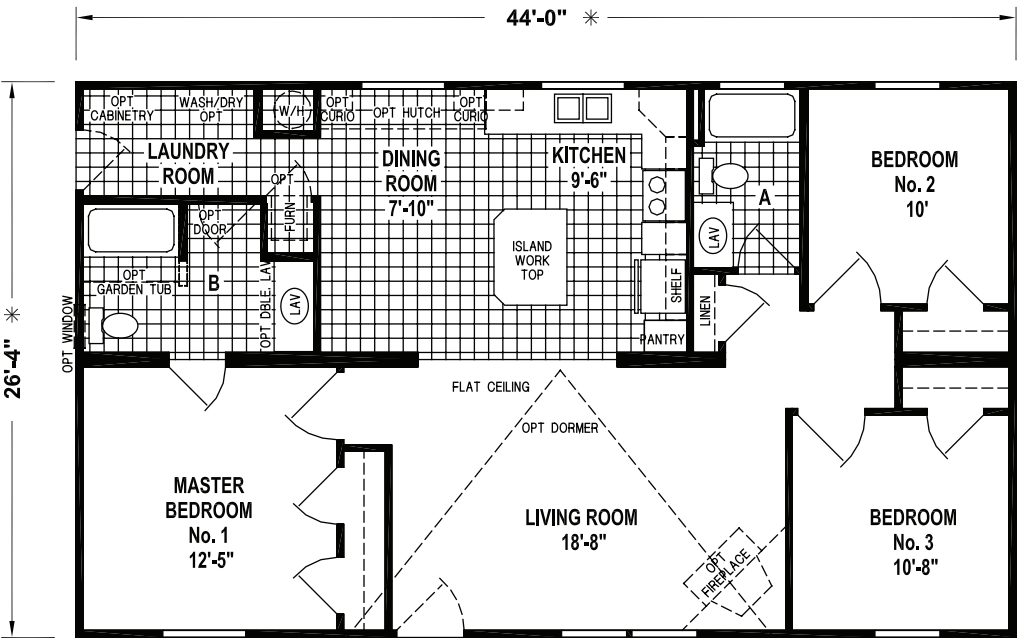
OPTION PORCH/ALTERNATE ENTRY



F570CTQ

44' x 28' – 1,158 SQ. FT. – 3 BEDROOMS – 2 BATHS

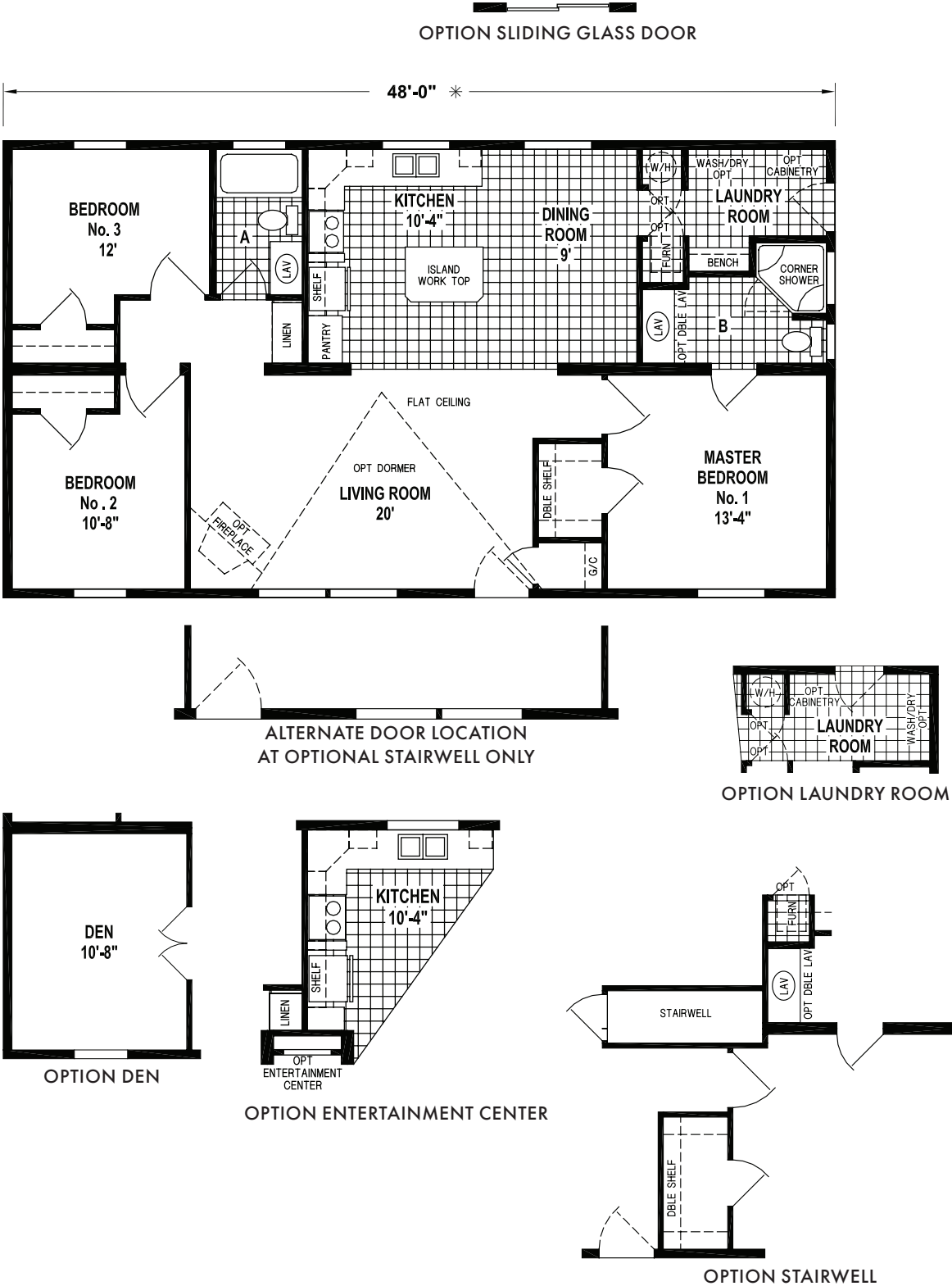
OPTION SLIDING GLASS DOOR



28' SERIES

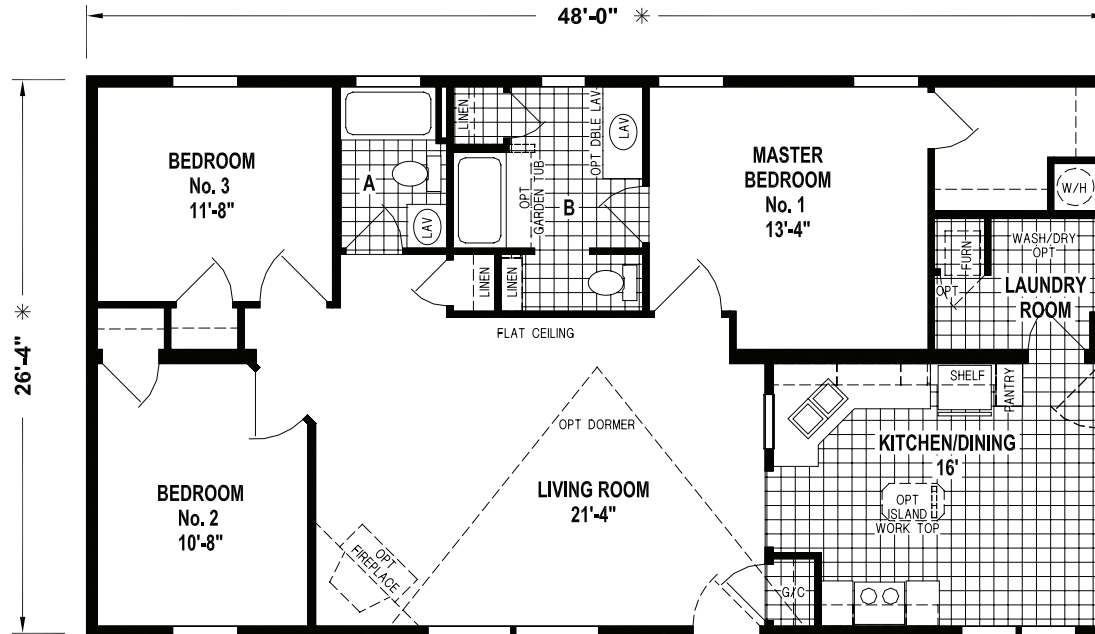
F555

48' x 28' – 1,264 SQ. FT. – 3 BEDROOMS – 2 BATHS

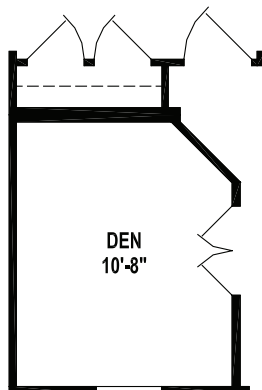


F563CTQ

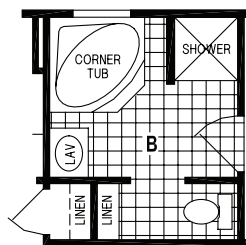
48' x 28' – 1,264 SQ. FT. – 3 BEDROOMS – 2 BATHS



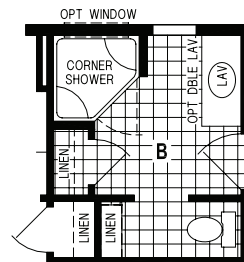
OPTION SLIDING GLASS DOOR



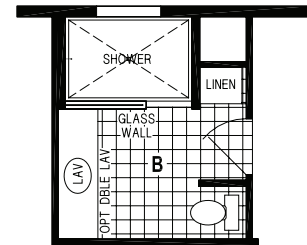
OPTION DEN



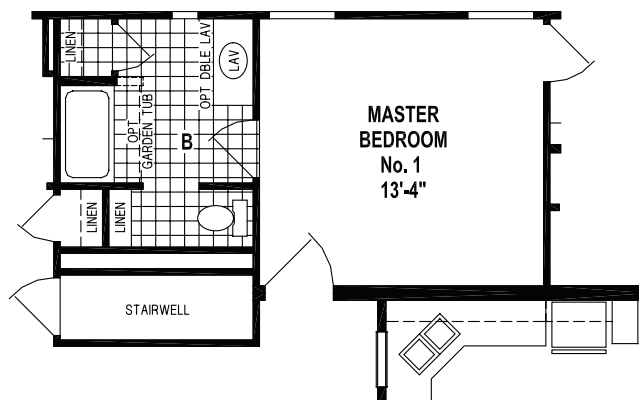
OPTION CORNER TUB BATH



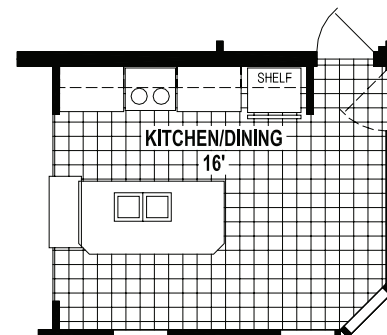
OPTION CORNER SHOWER BATH



OPTION WALK-IN SHOWER BATH



OPTION STAIRWELL

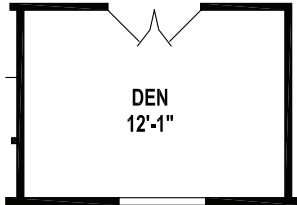
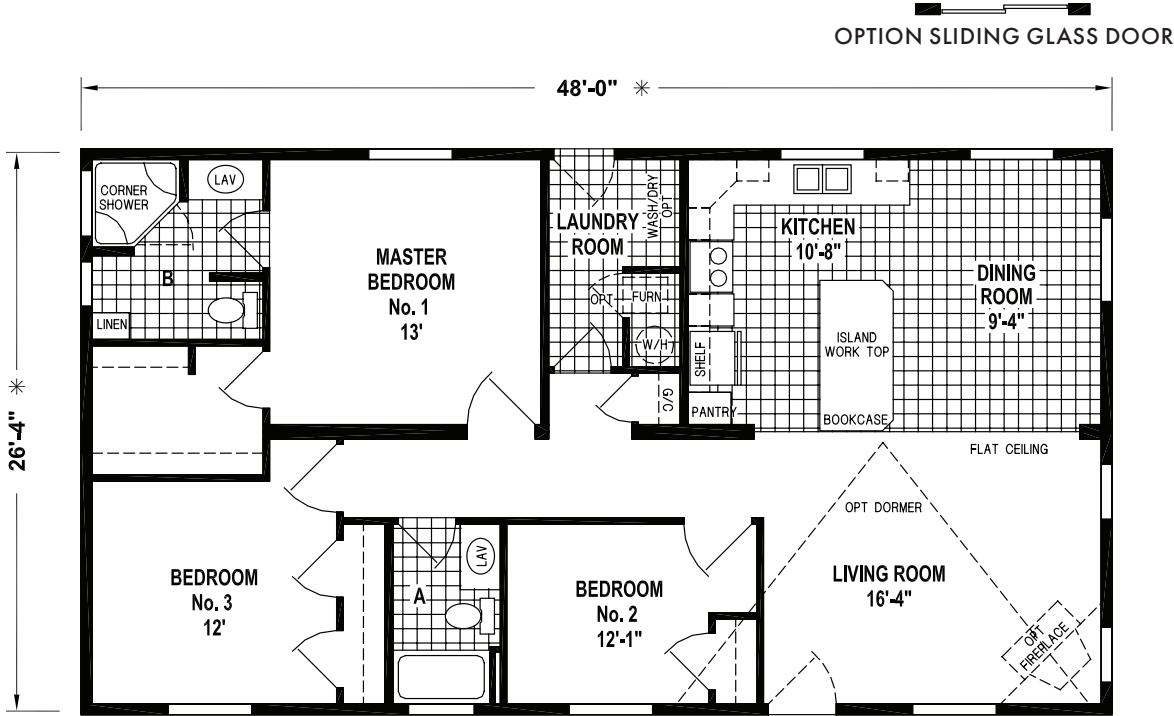


OPTION KITCHEN (1,261 SQ. FT.)

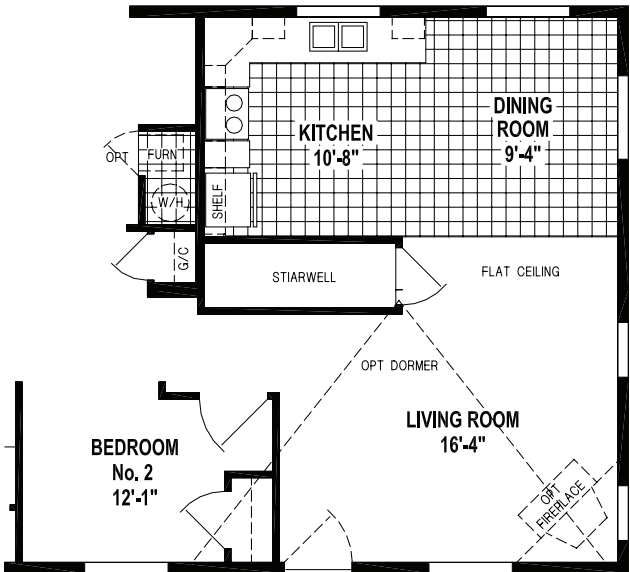
28' SERIES

F590CTQ

48' x 28' – 1,264 SQ. FT. – 3 BEDROOMS – 2 BATHS



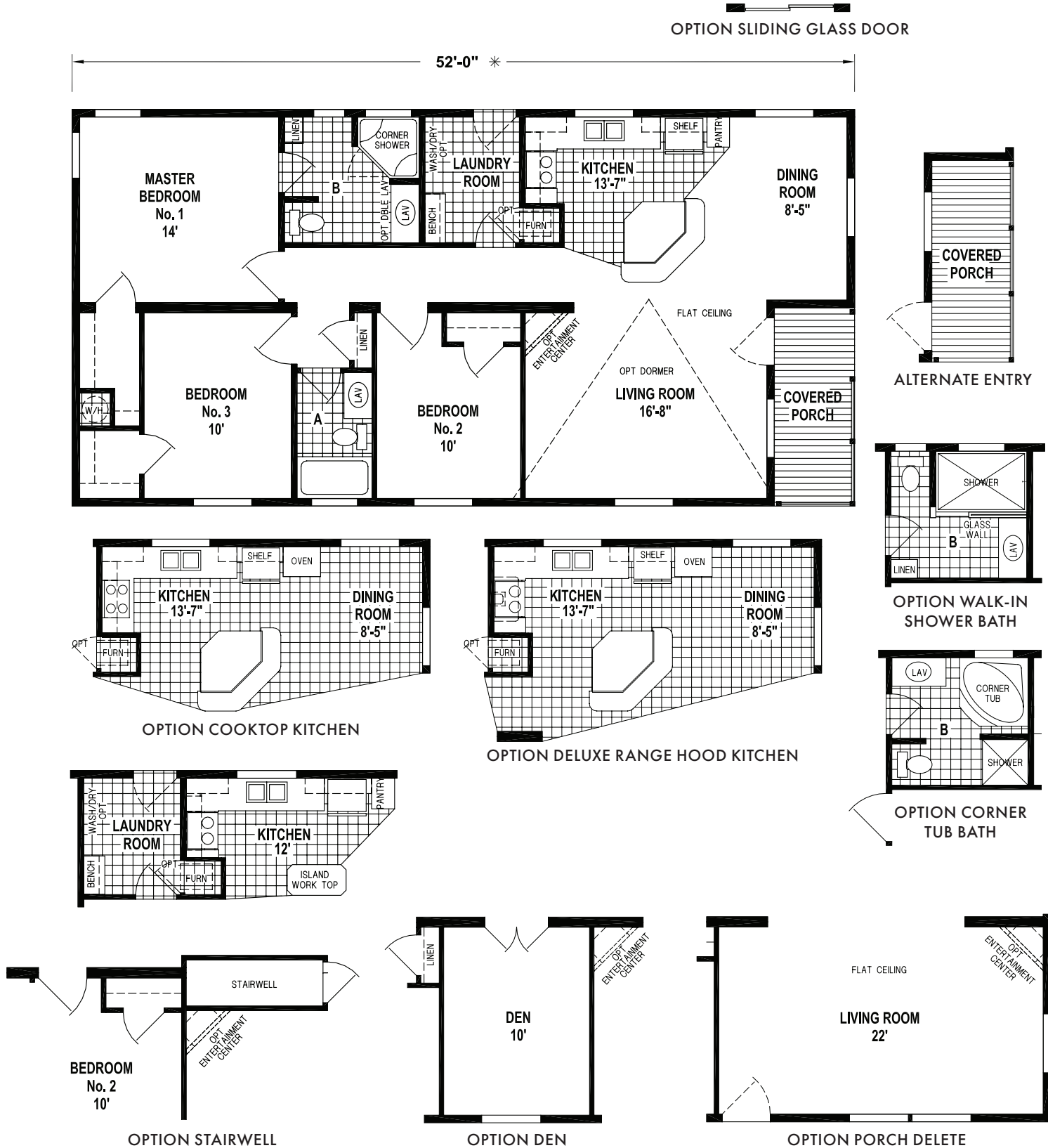
OPTION DEN



OPTION STAIRWELL

F530

52' x 28' – 1,369 SQ. FT. – 3 BEDROOMS – 2 BATHS



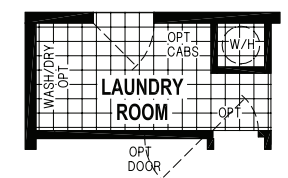
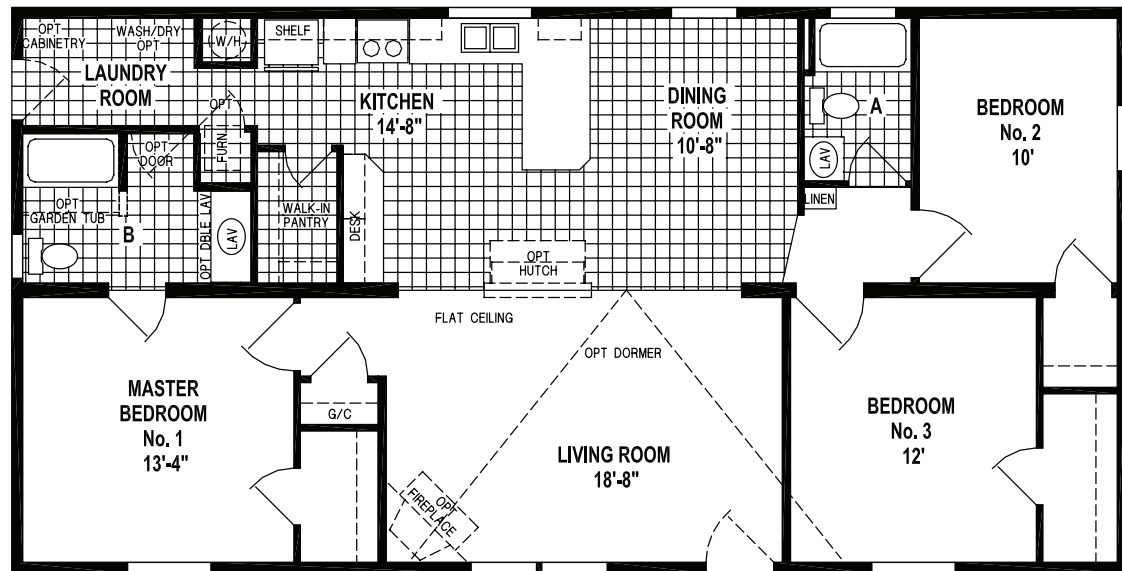


## 28' SERIES

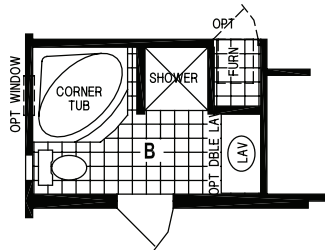
### F545CTE

52' x 28' – 1,369 SQ. FT. – 3 BEDROOMS – 2 BATHS

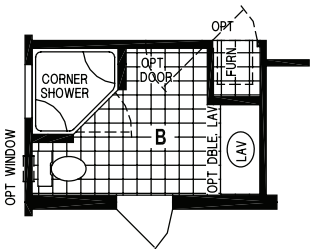
OPTION SLIDING GLASS DOOR



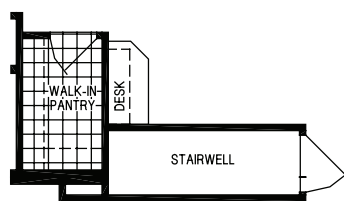
OPTION LAUNDRY ROOM



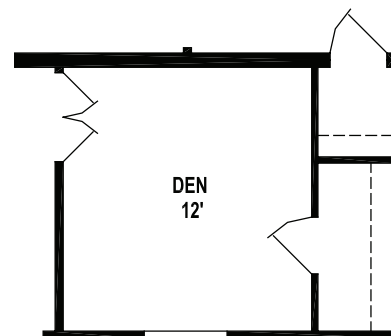
OPTION DELUXE BATH



OPTION CORNER SHOWER BATH



OPTION STAIRWELL

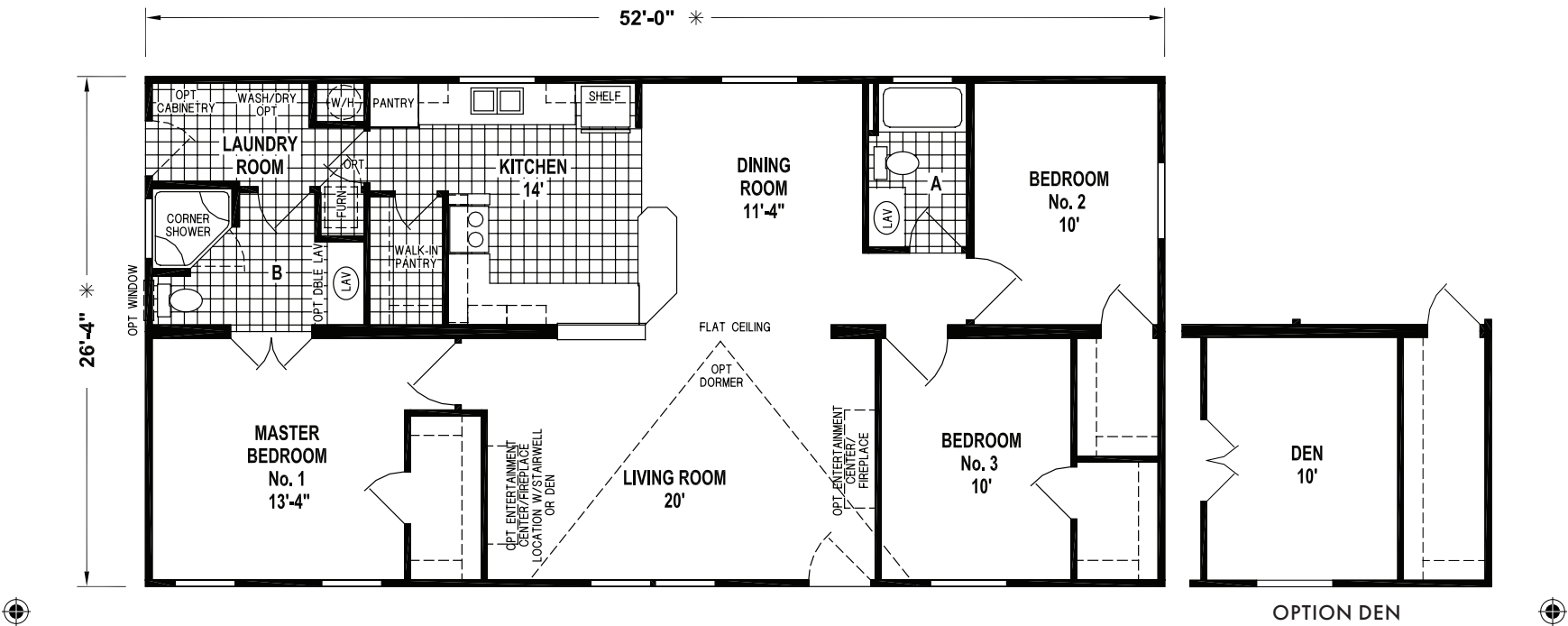


OPTION DEN

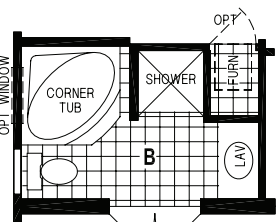
F564CTQ

52' x 28' – 1,369 SQ. FT. – 3 BEDROOMS – 2 BATHS

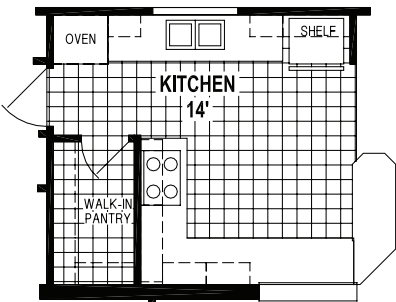
OPTION SLIDING GLASS DOOR



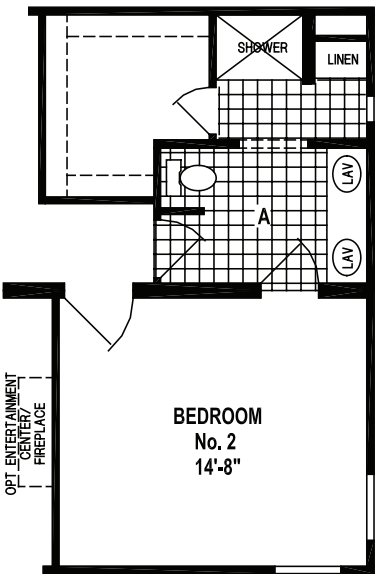
OPTION LAUNDRY ROOM



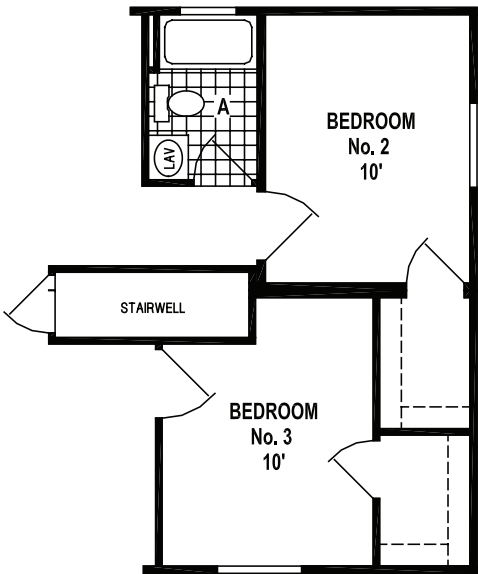
OPTION CORNER TUB BATH



OPTION COOKTOP KITCHEN



OPTION TWO BEDROOM CONFIGURATION

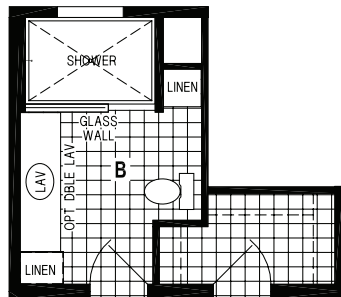
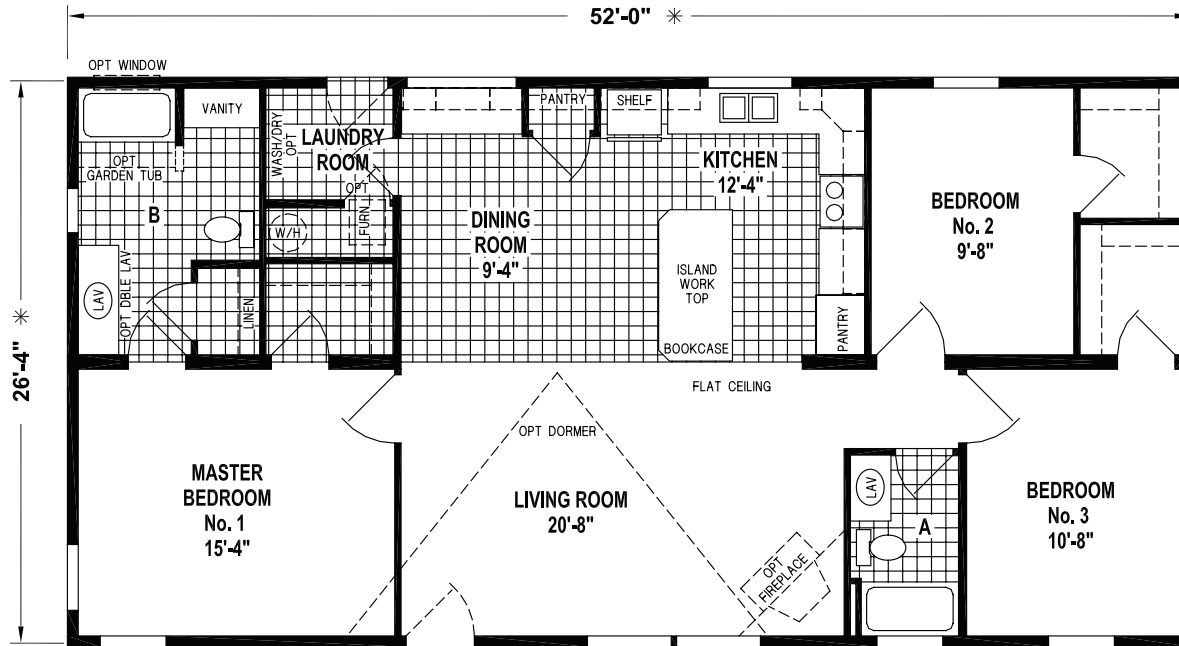


OPTION STAIRWELL

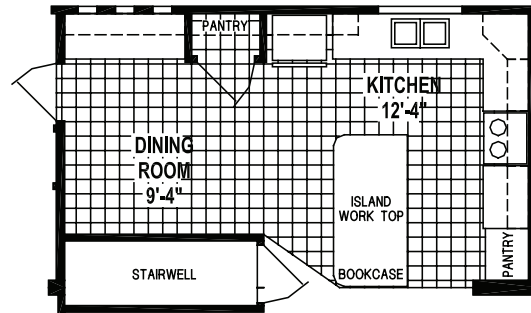
# 28' SERIES

F585Q

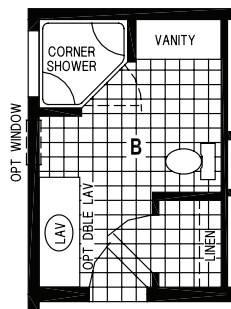
52' x 28' – 1,369 SQ. FT. – 3 BEDROOMS – 2 BATHS



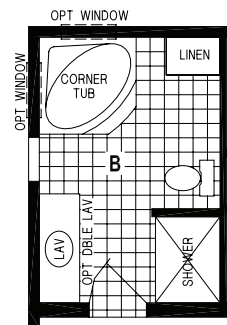
OPTION WALK-IN  
SHOWER BATH



OPTION STAIRWELL



OPTION CORNER  
SHOWER BATH



OPTION DELUXE BATH

**52'** \*

**26'-4"** \*

**WASH/DRY OPT**

**BENCH**

**W/H**

**LAUNDRY ROOM**

**FREEZER SPACE**

**OPT**

**FURN.**

**DINING ROOM 11'-10"**

**SHELF**

**KITCHEN 13'-10"**

**ISLAND WORK TOP**

**LINEN**

**DBLE SHELF**

**PANTRY**

**OPT LINEN**

**OPT DBLE LAV.**

**CORNER SHOWER**

**B**

**MASTER BEDROOM No. 1 12'-8"**

**BEDROOM No. 2 10'**

**BEDROOM No. 3 12'**

**LIVING ROOM 17'-4"**

**FLAT CEILING**

**OPT DORMER**

**OPT FIREPLACE**

**OPT WINDOW**

**LAV**

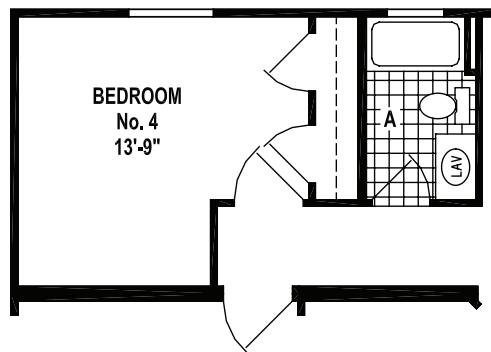
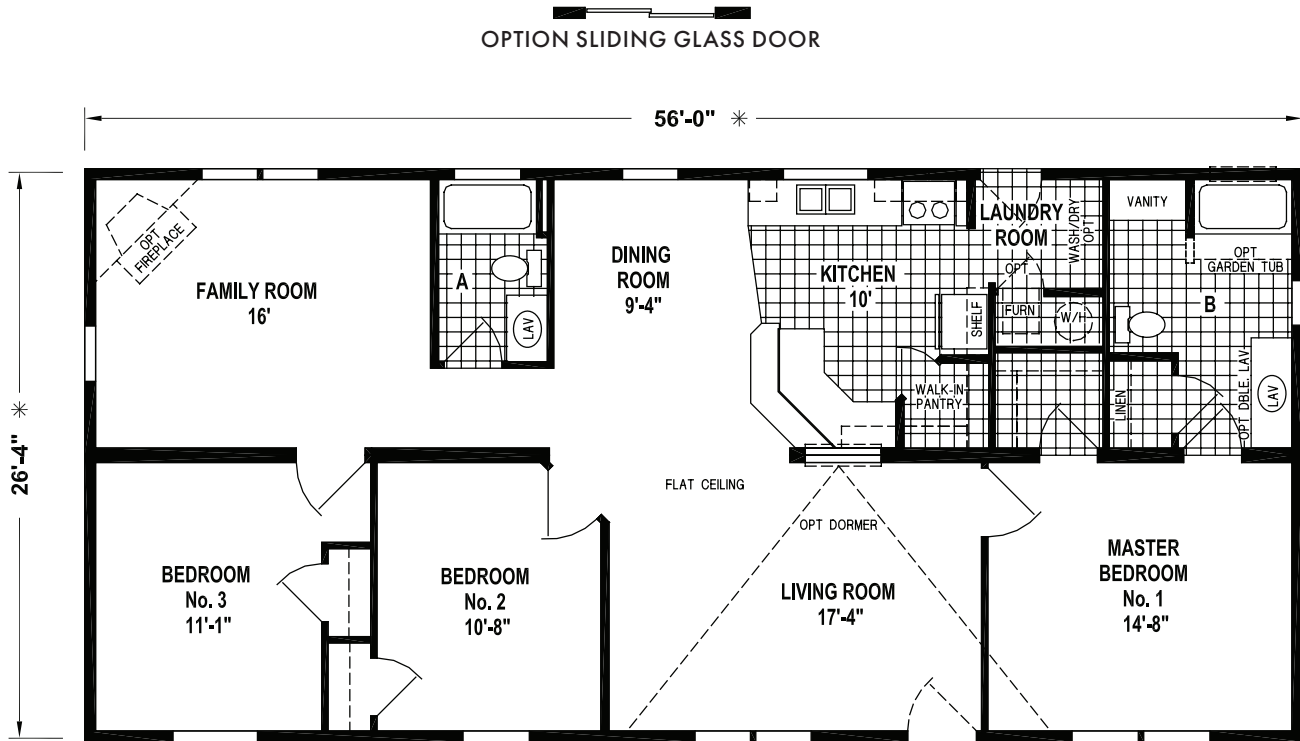
**A**

3/26/18 2:29 PM

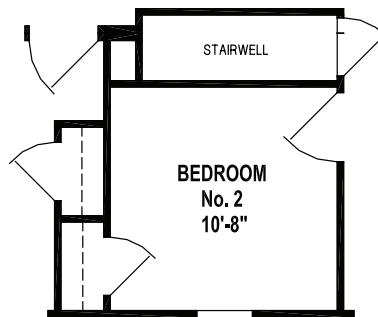
## 28' SERIES

### F504CTQ

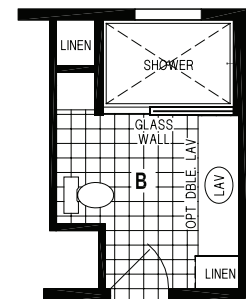
56' x 28' – 1,474 SQ. FT. – 3 BEDROOMS – 2 BATHS



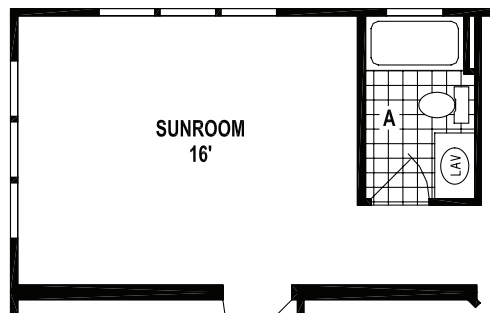
OPTION FOURTH BEDROOM



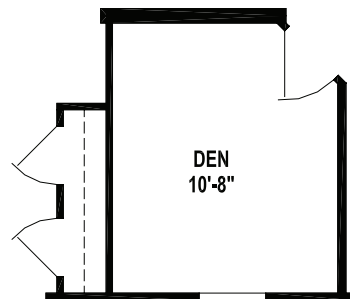
OPTION STAIRWELL



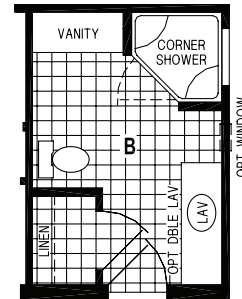
OPTION WALK-IN SHOWER BATH



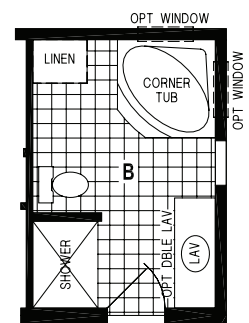
OPTION SUNROOM



OPTION DEN



OPTION CORNER SHOWER BATH

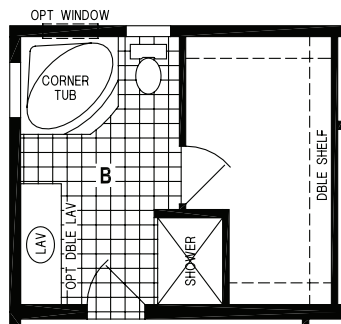
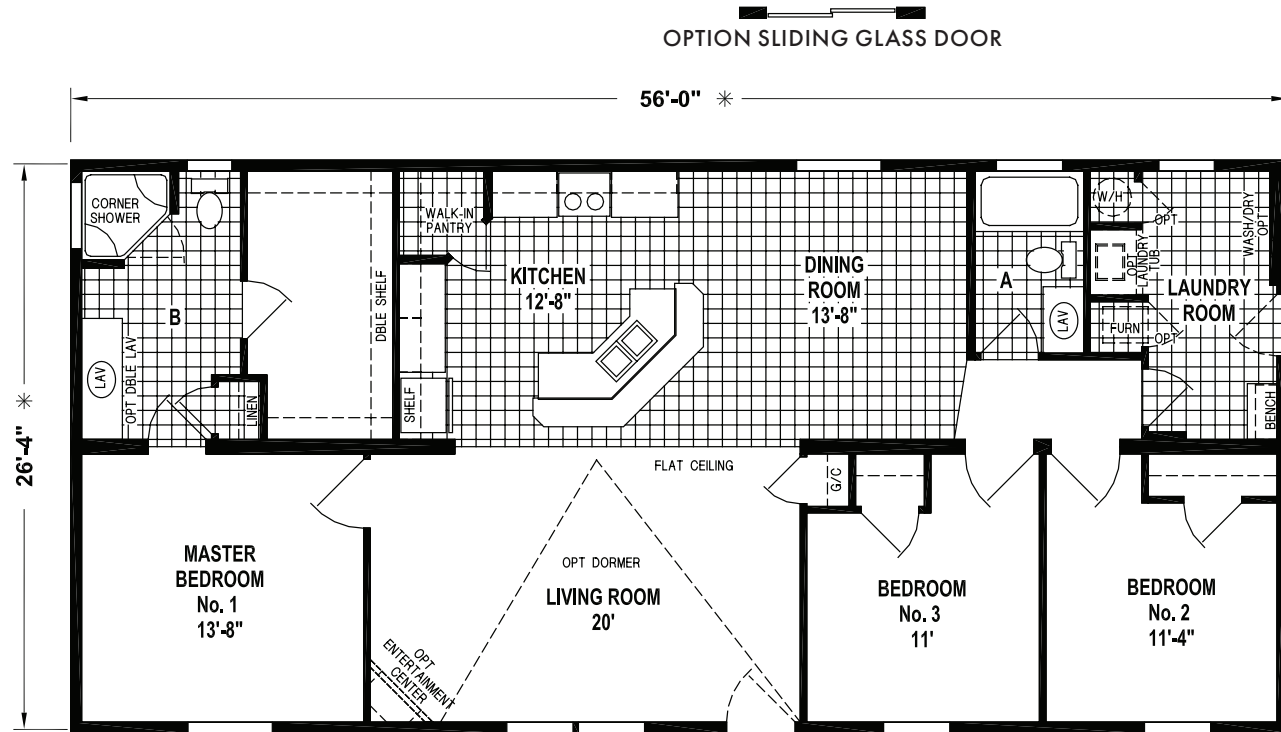


OPTION CORNER TUB BATH

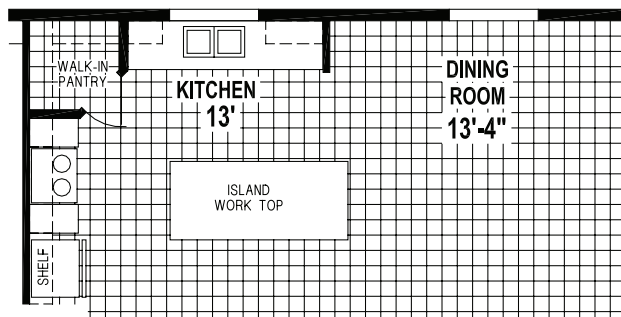


F521

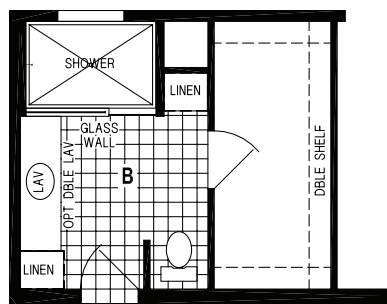
56' x 28' – 1,474 SQ. FT. – 3 BEDROOMS – 2 BATHS



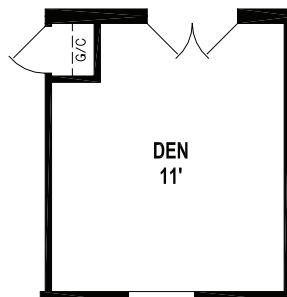
OPTION CORNER TUB BATH



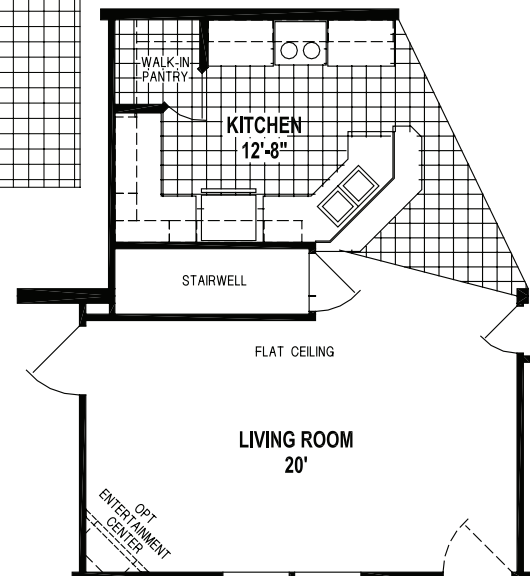
OPTION KITCHEN  
N/A WITH OPTION STAIRWELL



OPTION WALK-IN SHOWER BATH



OPTION DEN

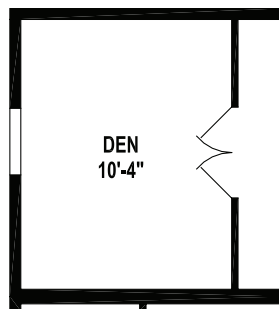
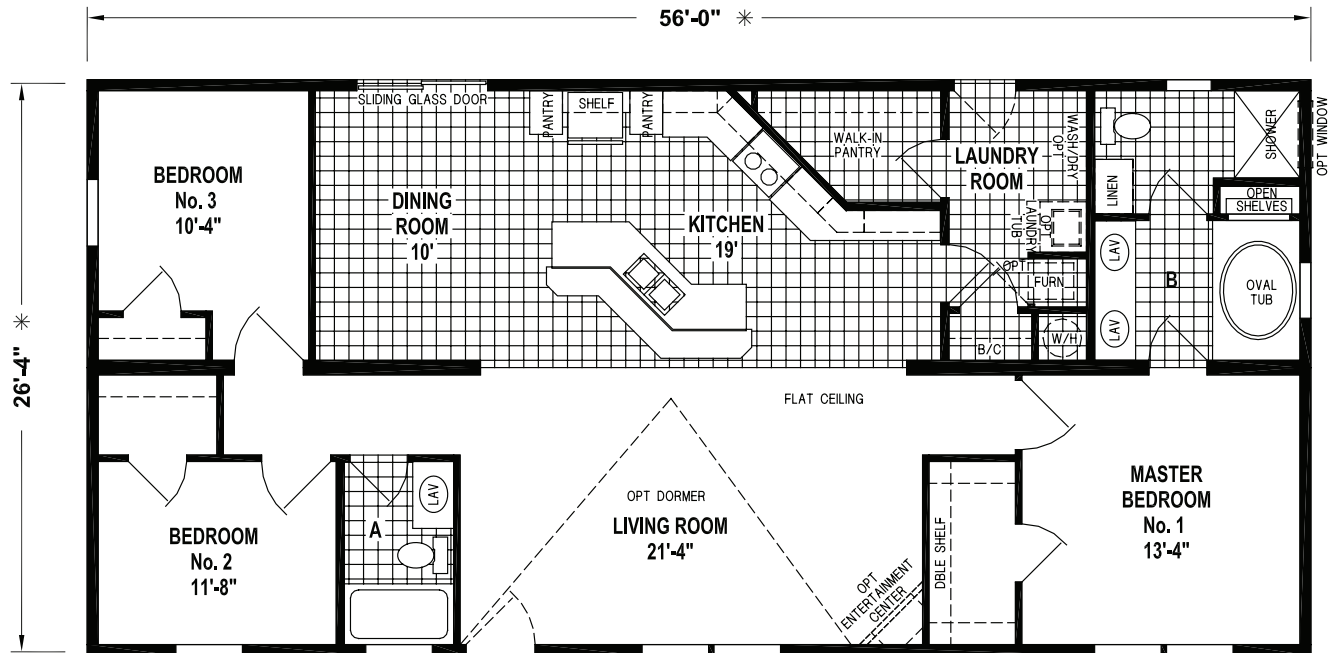


OPTION STAIRWELL

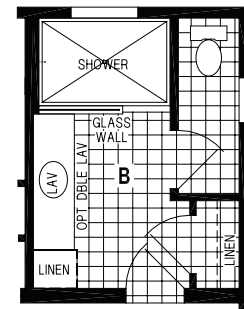
## 28' SERIES

F526

56' x 28' – 1,474 SQ. FT. – 3 BEDROOMS – 2 BATHS



OPTION DEN



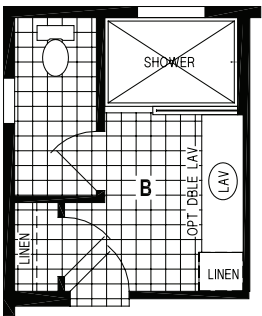
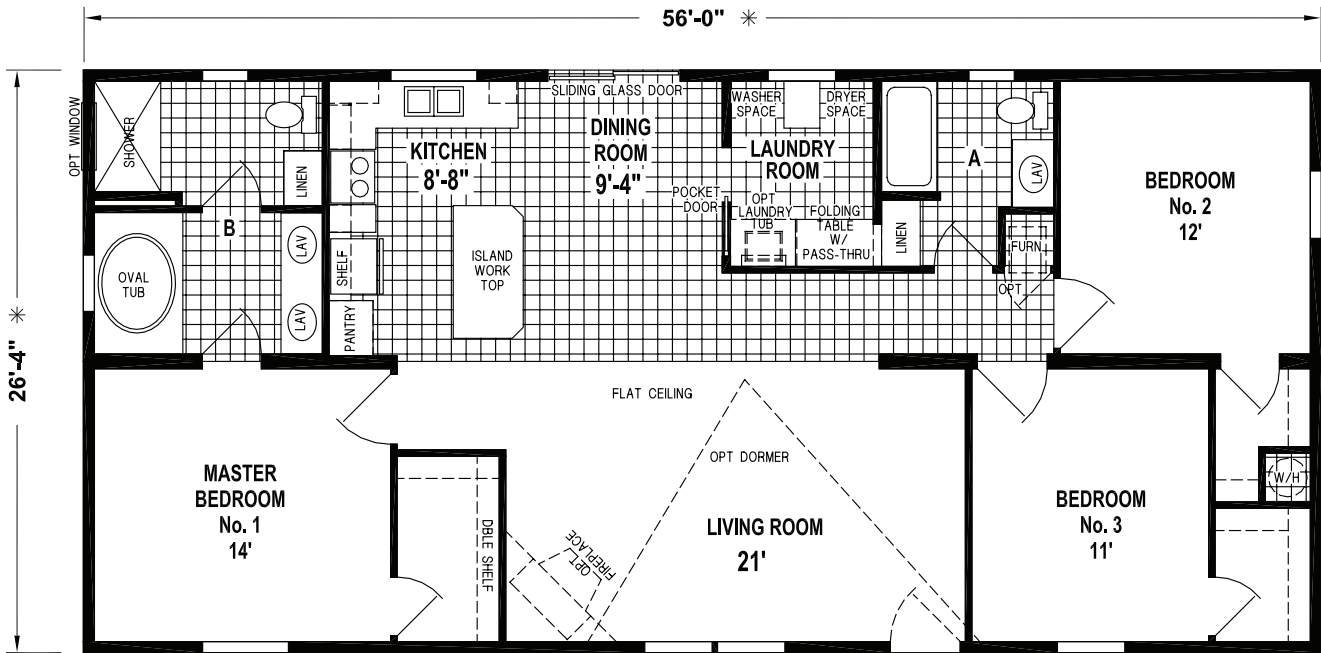
OPTION WALK-IN  
SHOWER BATH



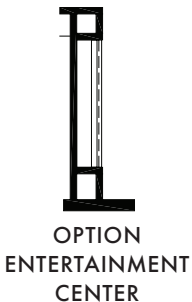
All Skyline homes are covered by our no-nonsense 15-month warranty, the very best in the industry. It's our way of showing our customers how much we believe in the quality we build into every Skyline home. Our warranty gives new homeowners the assurance that comes from working with a company with more than six decades of building.

# F532

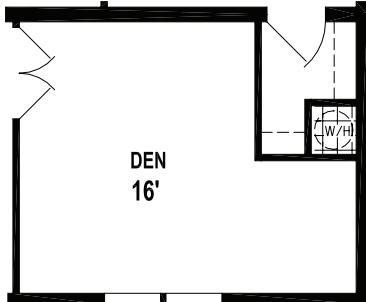
**56' x 28' – 1,474 SQ. FT. – 3 BEDROOMS – 2 BATHS**



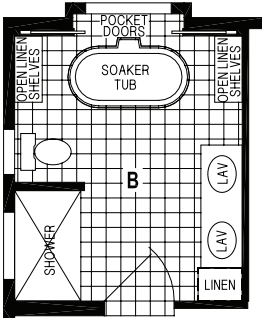
### OPTION WALK-IN SHOWER BATH



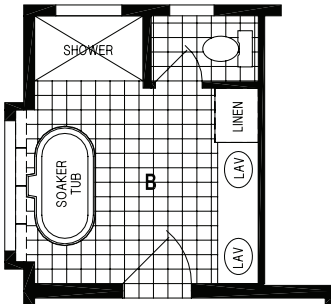
OPTION  
ENTERTAINMENT  
CENTER



### OPTION DEMO



## ALTERNATE SOAKER TUB BATH

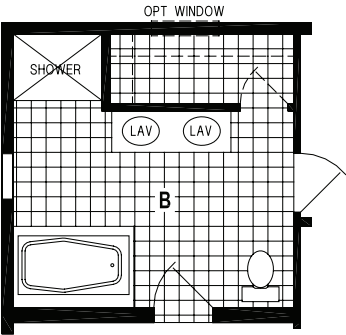
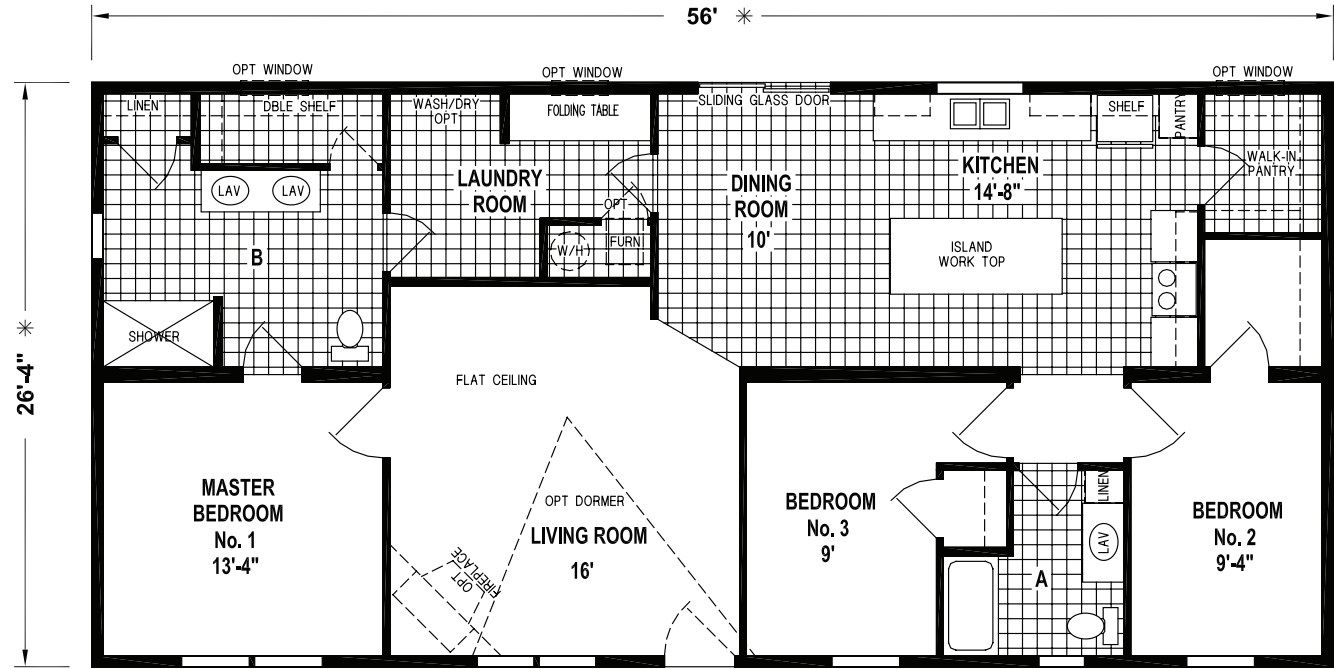


### OPTION SOAKER TUB BATH

28' SERIES

F546E

56' x 28' – 1,474 SQ. FT. – 3 BEDROOMS – 2 BATHS



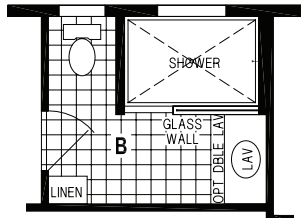
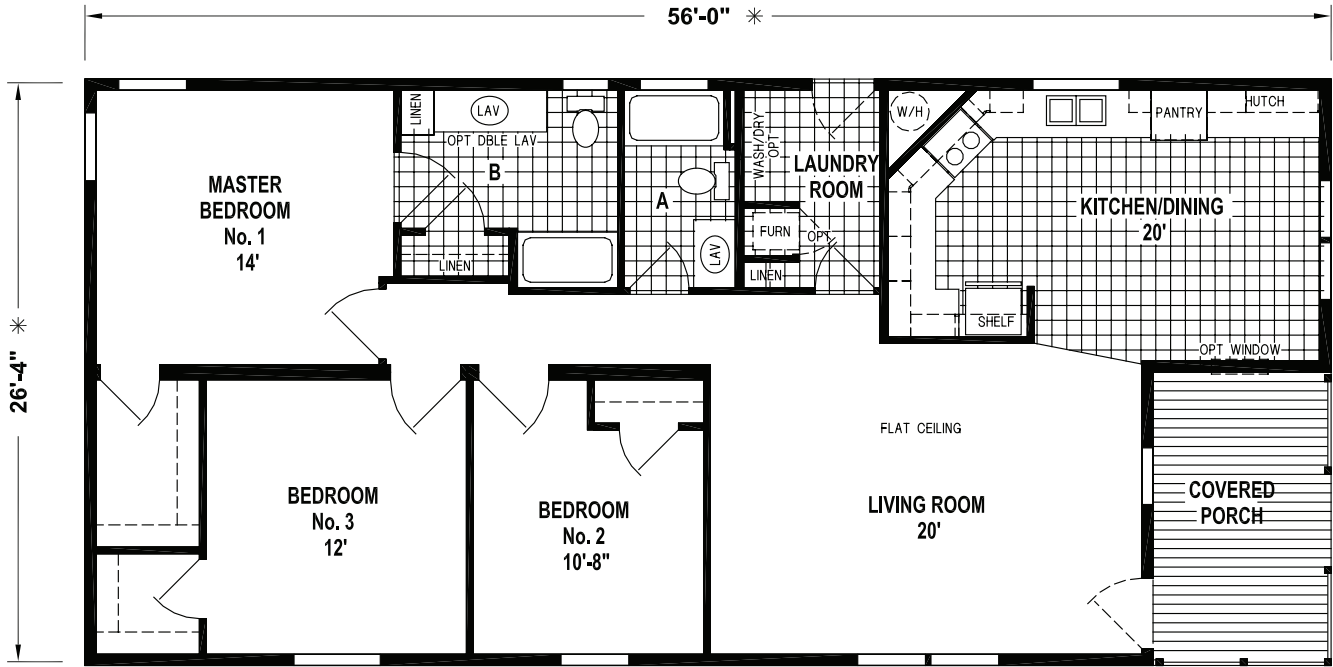
OPTION DELUXE BATH



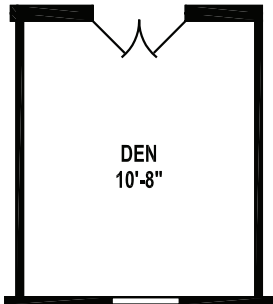
OPTION ENTERTAINMENT CENTER  
WITH 50" ELECTRIC FIREPLACE

F569CTB

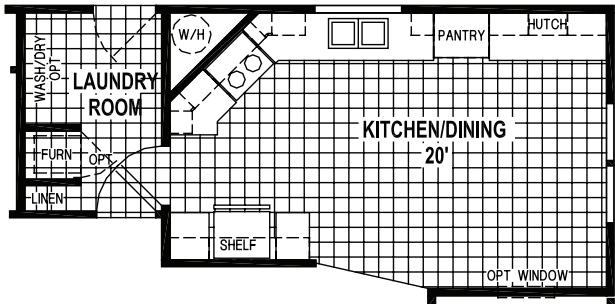
56' x 28' – 1,377 SQ. FT. – 3 BEDROOMS – 2 BATHS



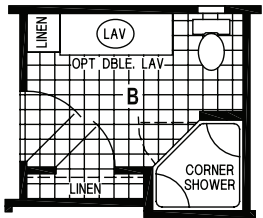
OPTION WALK-IN SHOWER BATH



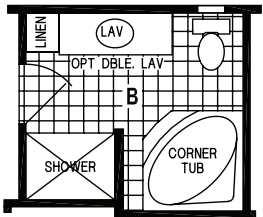
OPTION DEN



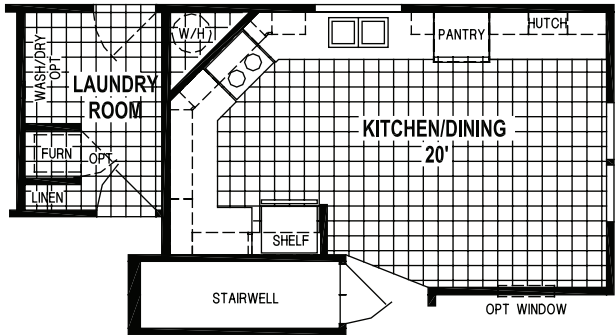
OPTION KITCHEN



OPTION CORNER SHOWER BATH



OPTION CORNER TUB BATH



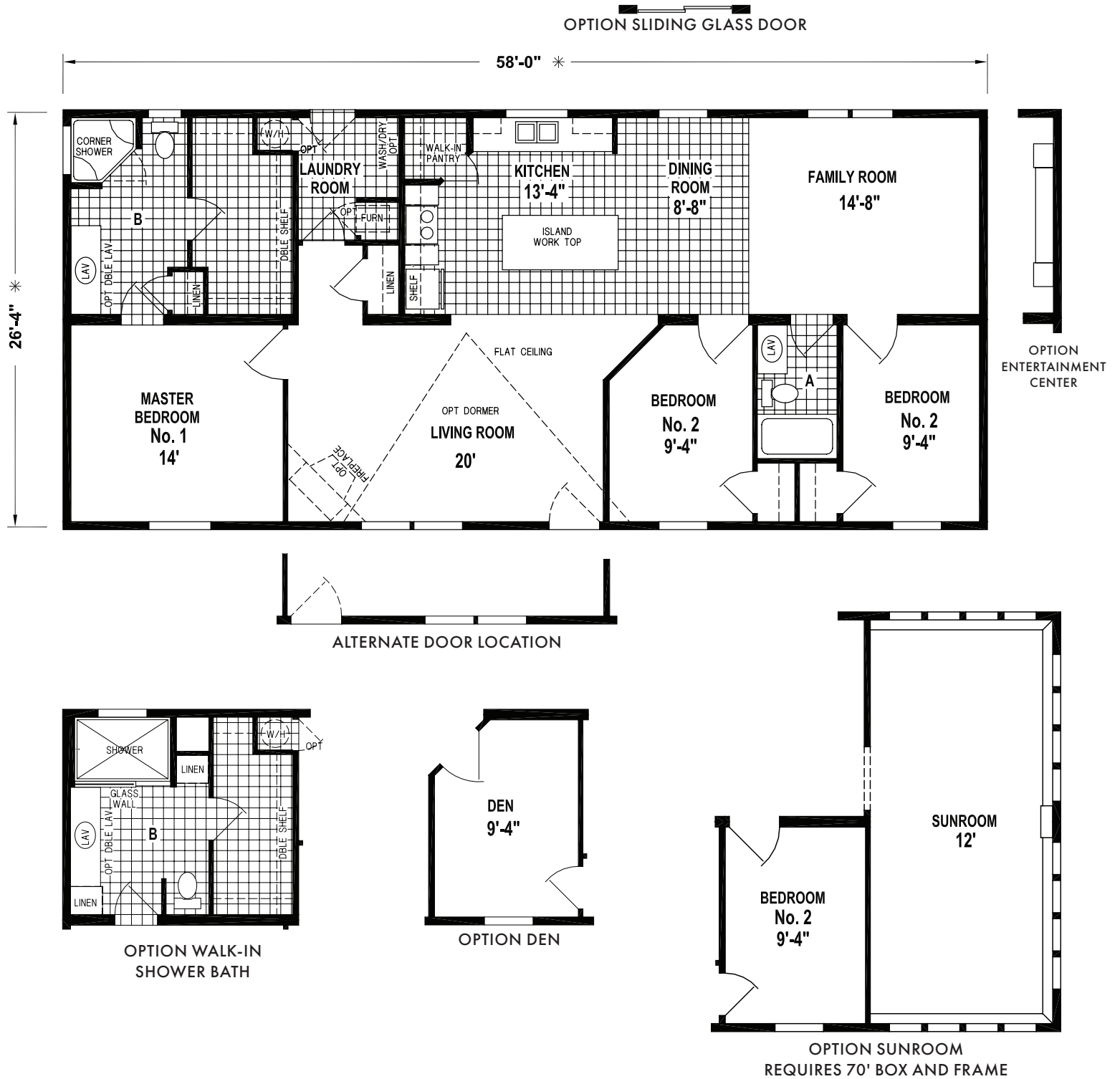
OPTION STAIRWELL



## 28' SERIES

F522

58' x 28' – 1,527 SQ. FT. – 3 BEDROOMS – 2 BATHS

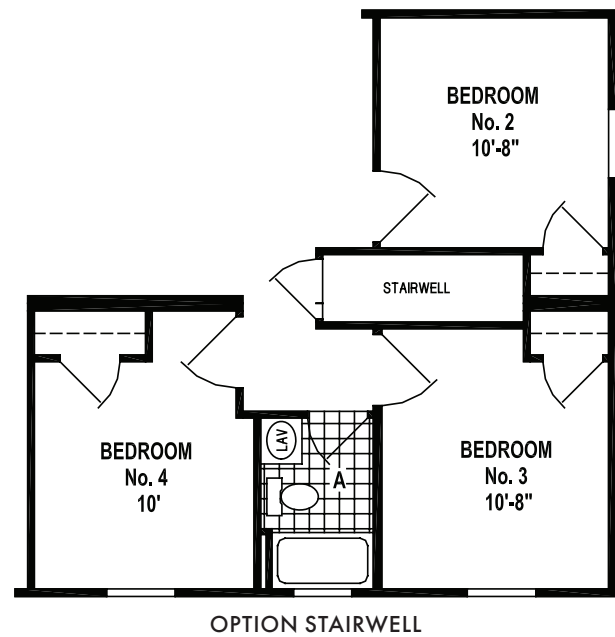
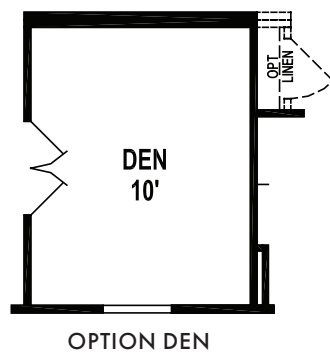
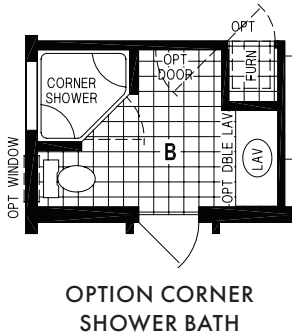
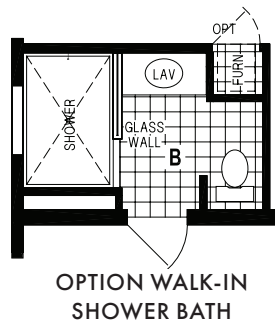
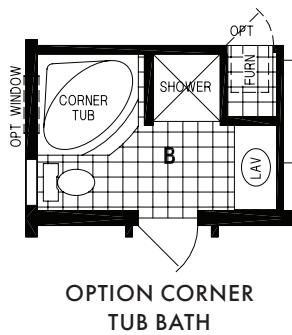
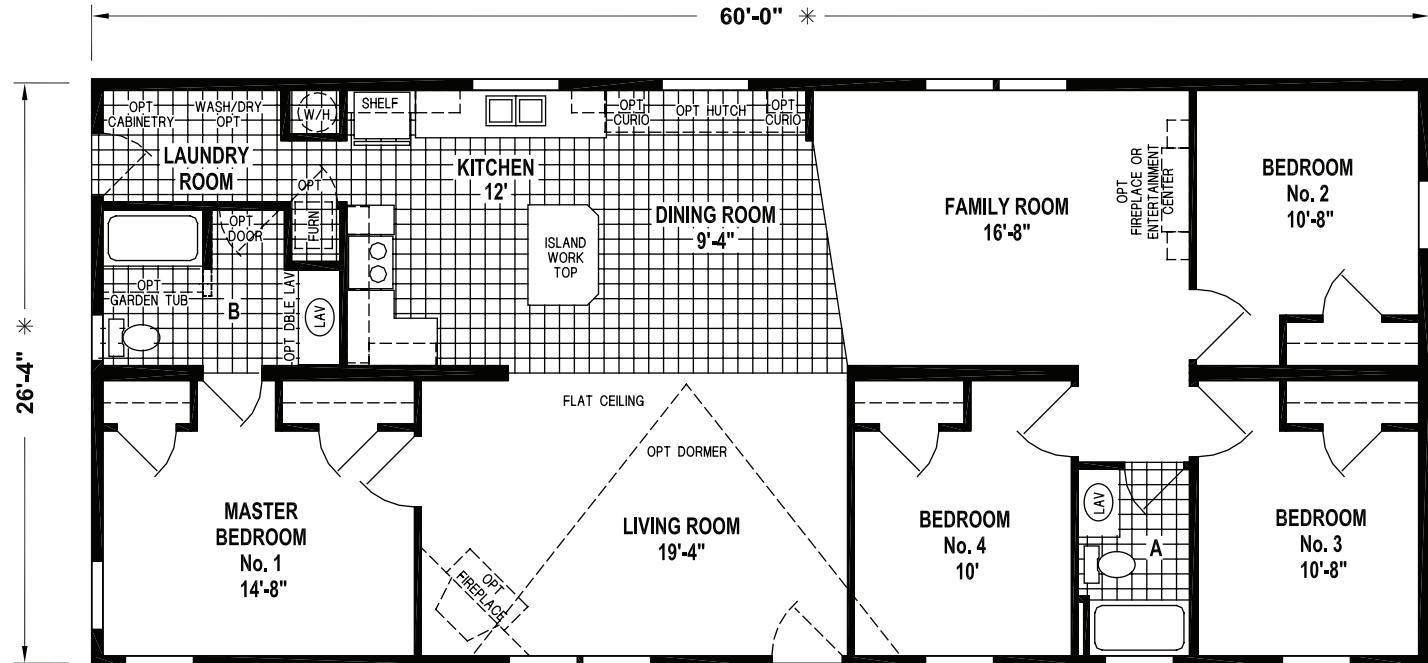


# 28' SERIES

## F502CTQ

60' x 28' – 1,580 SQ. FT. – 4 BEDROOMS – 2 BATHS

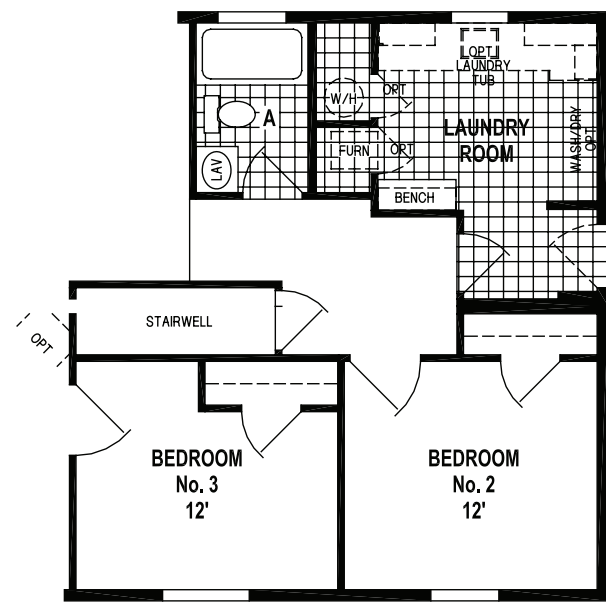
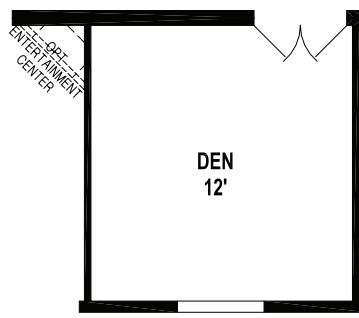
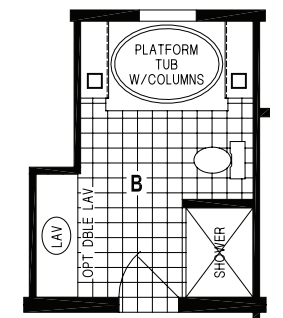
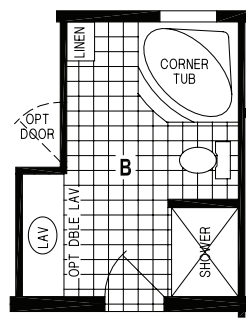
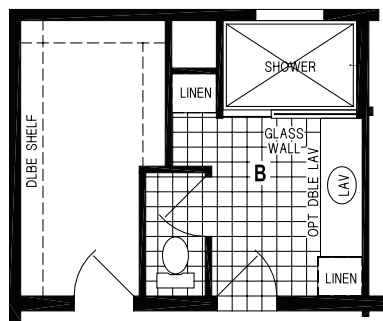
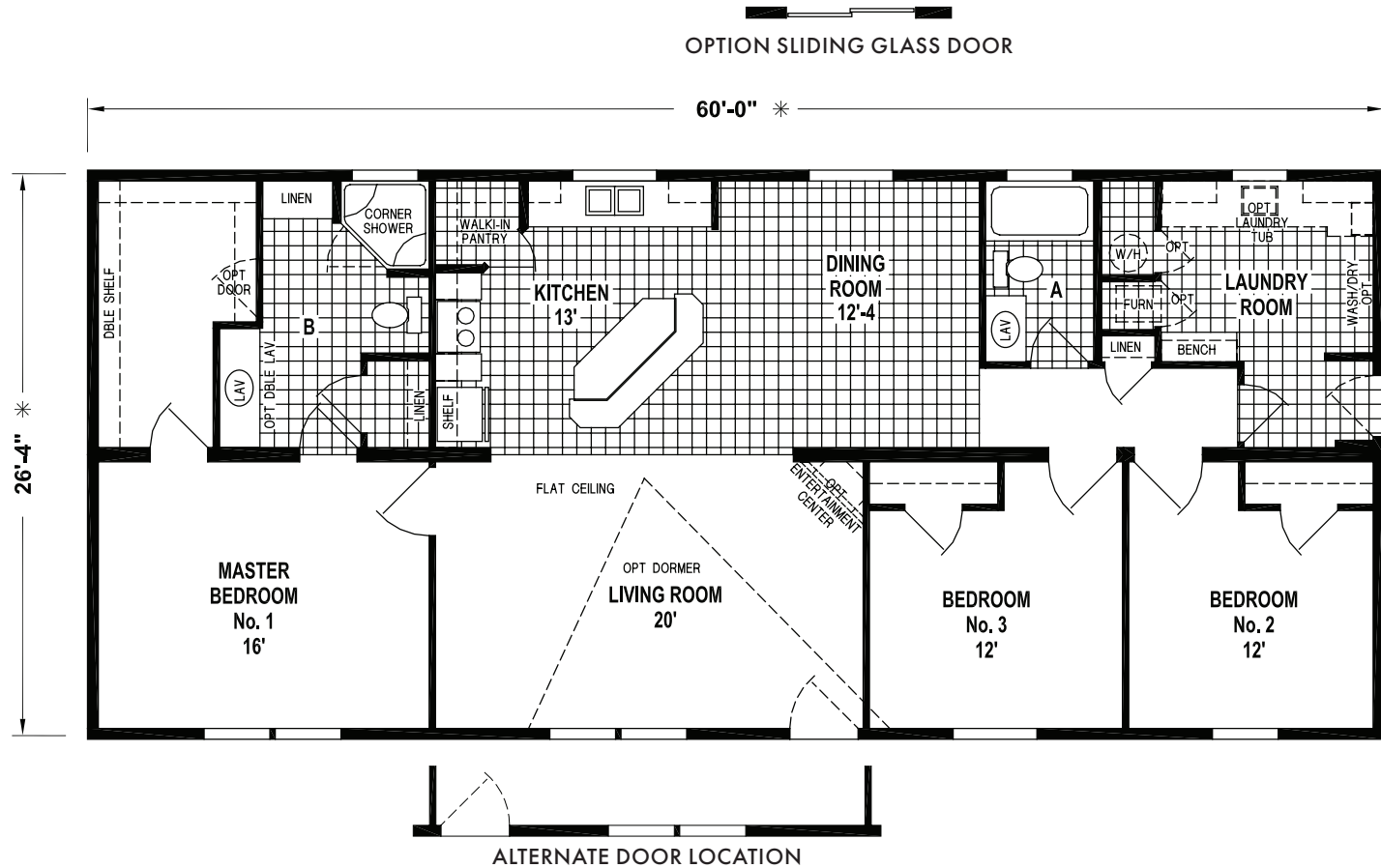
OPTION SLIDING GLASS DOOR



## 28' SERIES

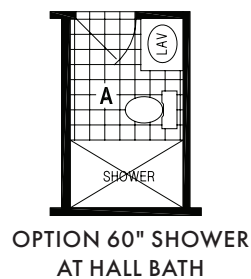
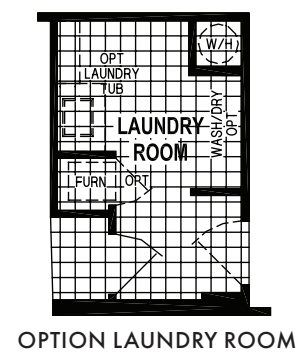
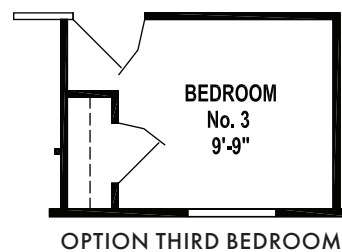
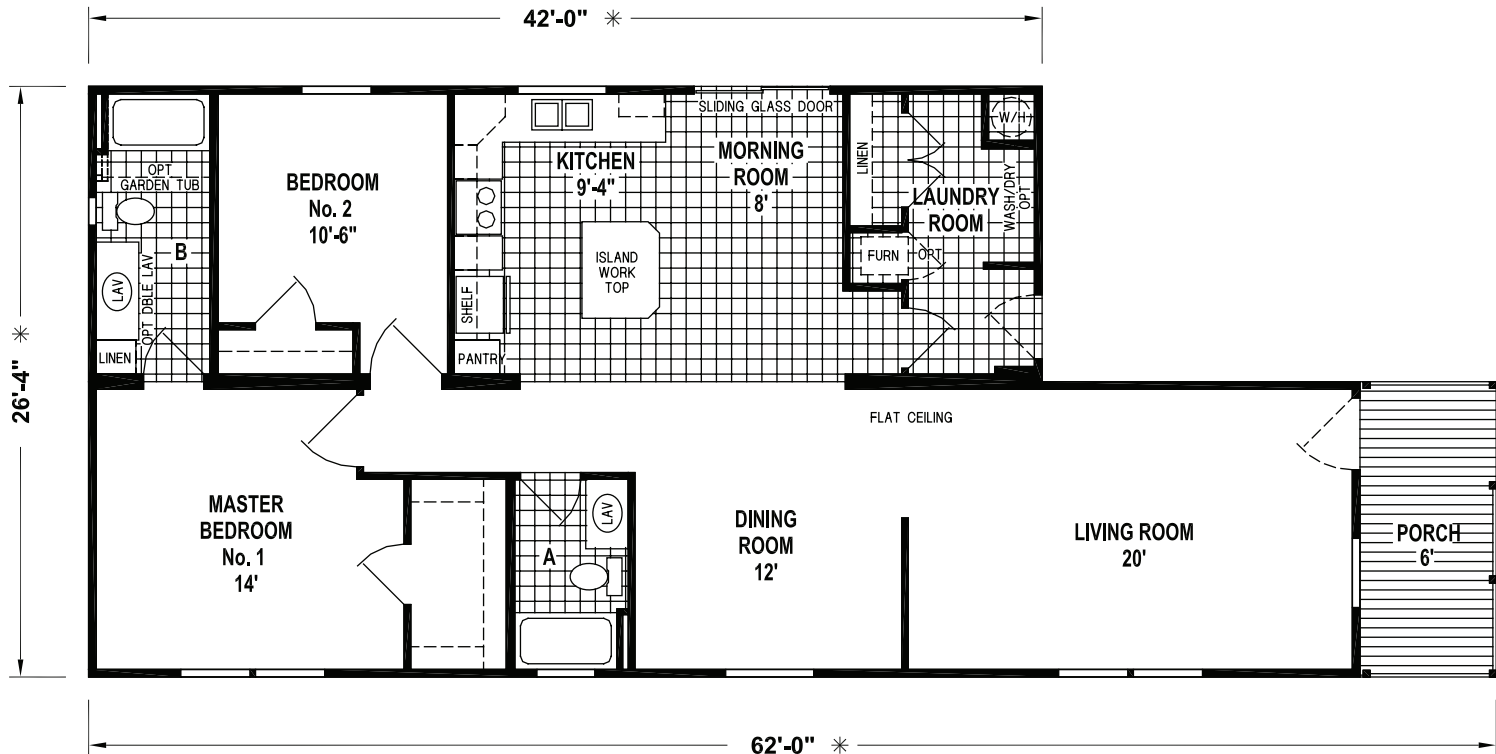
F562

60' x 28' – 1,580 SQ. FT. – 3 BEDROOMS – 2 BATHS



F589CTE

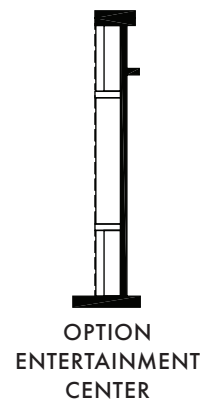
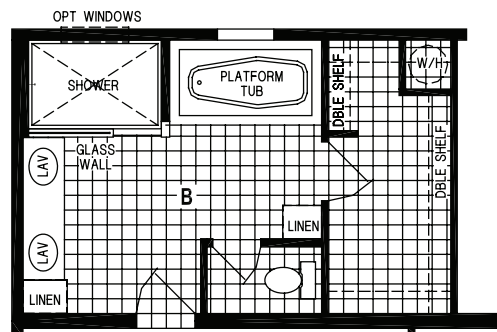
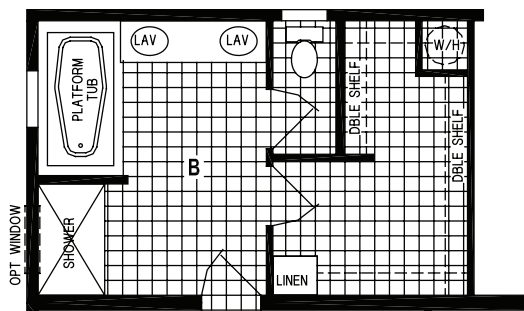
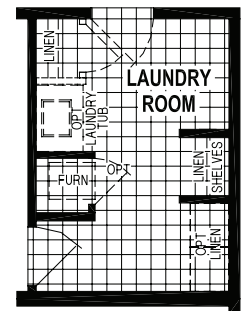
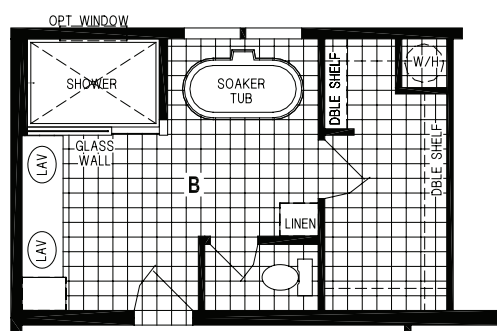
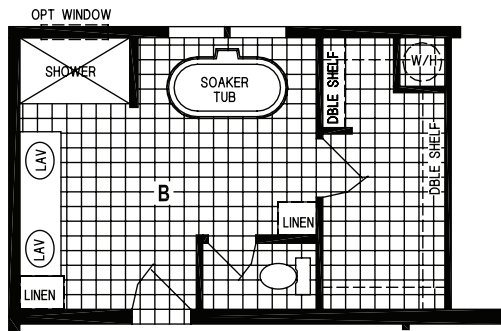
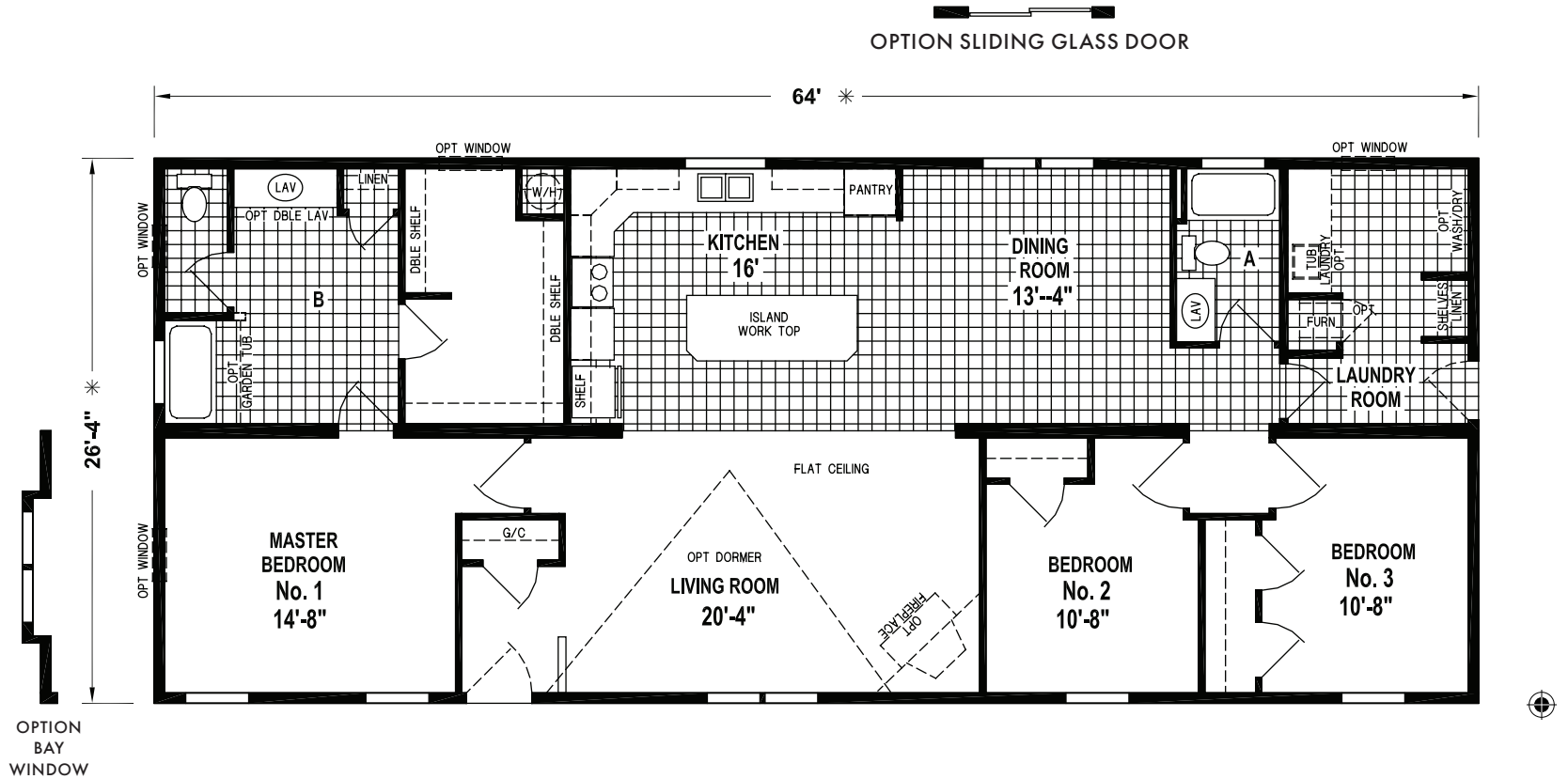
42'-62' x 28' – 1,290 SQ. FT. – 2 BEDROOMS – 2 BATHS



# 28' SERIES

F540E

64' x 28' – 1,685 SQ. FT. – 3 BEDROOMS – 2 BATHS

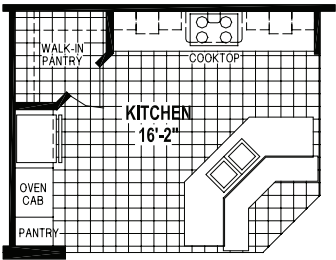
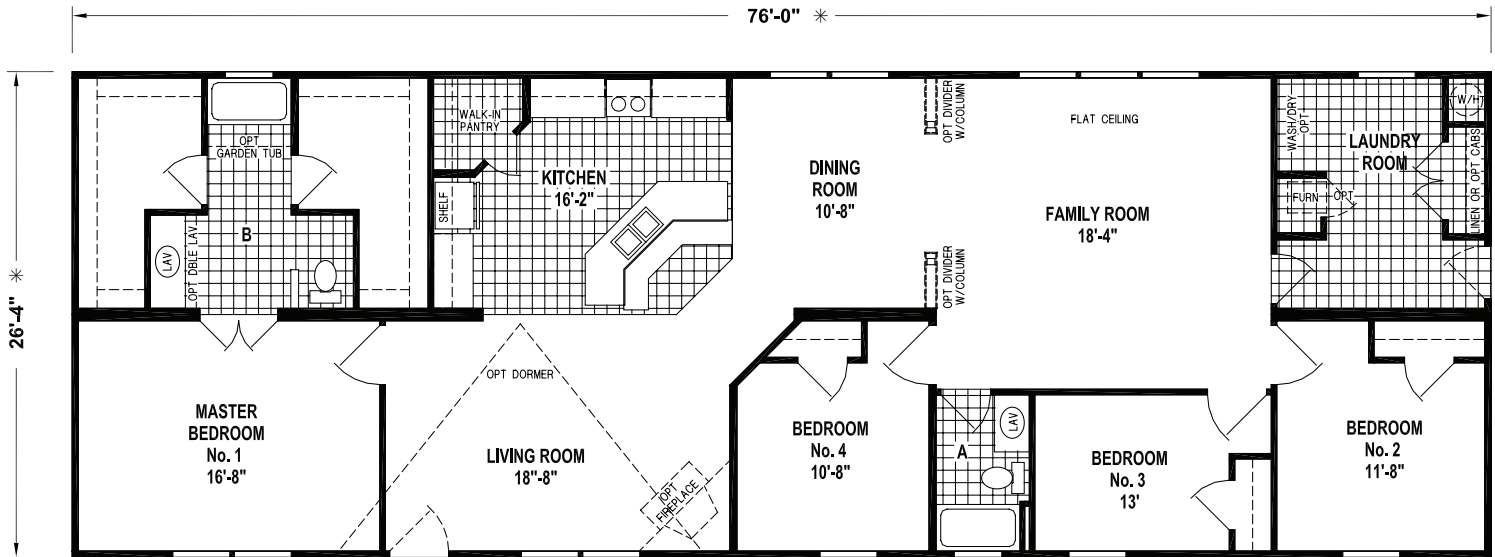




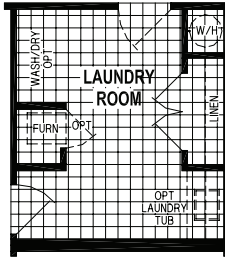
# F549CTQ

76' x 28' – 2,001 SQ. FT. – 4 BEDROOMS – 2 BATHS

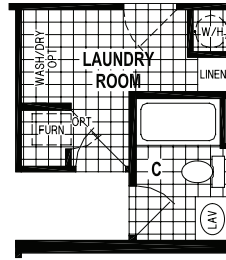
OPTION SLIDING GLASS DOOR



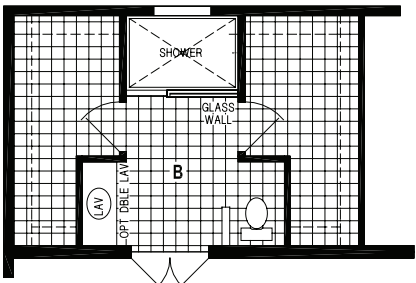
### OPTION GOURMET KITCHEN



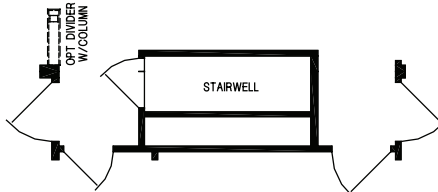
### OPTION LAUNDRY ROOM



### OPTION THIRD BATH



### OPTION WALK-IN SHOWER BATH

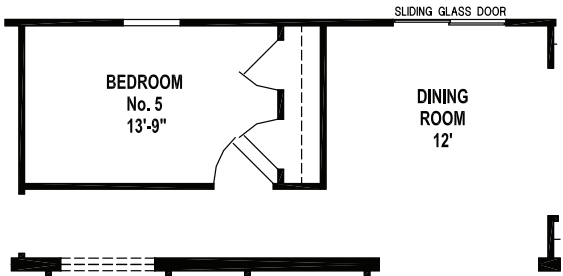
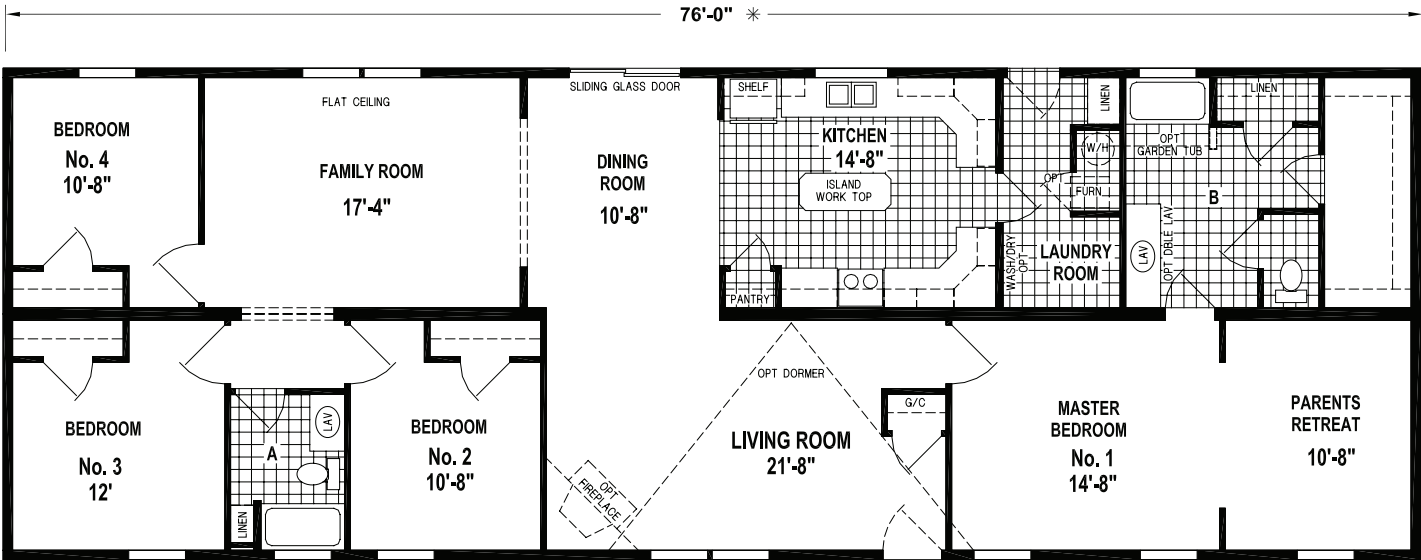


## OPTION STAIRWEL

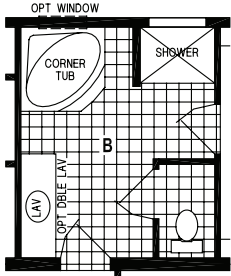
28' SERIES

F582Q

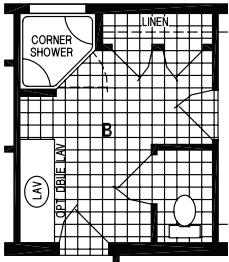
76' x 28' – 2,001 SQ. FT. – 4 BEDROOMS – 2 BATHS



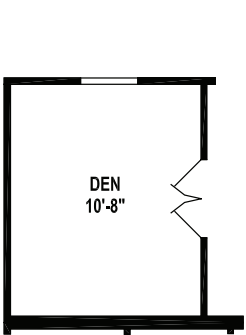
OPTION FIFTH BEDROOM



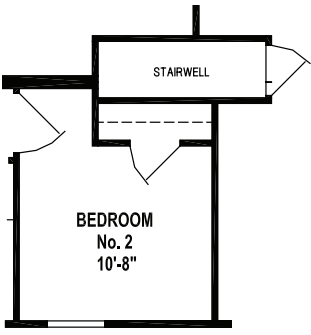
OPTION CORNER TUB BATH



OPTION CORNER SHOWER BATH



OPTION DEN



OPTION STAIRWELL

# Sunwood

## 24' AND 28' SERIES FLOOR PLANS

### STANDARD FEATURES

#### LIVING AREAS

- Carpet with Tack Strips
- Drapes with Mini Blinds in Living Room
- Dinette Lights – (2) Recess

#### KITCHEN

- Flat Panel Maple, Flat Panel Chocolate, Raised Panel Gray or Raised Panel White Cabinet Doors with Residential Hidden Hinges
- Solid Wood Face Frames
- 30" Overhead Cabinets
- Soft Close Drawers
- Lined Overhead and Base Cabinets
- Adjustable Shelves
- Box Built Cabinets
- 2nd Shelf Kitchen Base
- 8" Deep Stainless Steel Sink with Single Lever Faucet and Sprayer
- 18 Cu. Ft. Double Door Frost-Free Refrigerator
- 30" Deluxe Range with Range Hood
- Recess Lights
- Valance with Mini Blinds
- Shelf above Refrigerator
- Upgrade LUX Vinyl Flooring Standard

#### BATHROOM

- Flat Panel Maple, Flat Panel Chocolate, Raised Panel Gray or Raised Panel White Cabinet Doors with Residential Hidden Hinges
- Solid Wood Face Frames
- 36" High Lavs
- Decorative Mirror with Swiped Edges
- Privacy Locks
- Lighted Power Vent Fan
- China Sink with Over Flow and Pop-Up Drain
- Elongated China Commodes
- Single Lever Tub and Shower Diverters
- 36 x 8 Window (where applicable)
- 24 x 40 Window (where applicable)
- Wall Lights
- Valance with Mini Blinds
- Upgrade LUX Vinyl Flooring Standard

#### BEDROOMS

- Carpet with Tack Strips
- Drapes with Mini Blinds – Master Bedroom
- Valance with Mini Blinds – Guest Bedroom(s)
- Ventilated Wire Shelving

#### ADDITIONAL FEATURES

- 8' Sidewall Height
- Flat Ceiling Throughout
- Shingle Roof with 25-Year Shingles and Roof Vent
- Vinyl Double 4" Dutch Lap Siding
- Carpet Pad Throughout with Tack Strip
- Lever Latch Door Handles
- Gas Furnace
- 30 Gallon Electric Water Heater with Dual Element
- Water Shut-Off Valve at all Fixtures
- PEX Water Lines
- Smooth Fiberglass 6-Panel Front Door with Sunburst Window
- Smooth Fiberglass 9-Lite Rear Door
- Deadbolt Front and Rear Door with Keyed Alike Hardware
- Vinyl Windows with Low "E" Glass
- Window Grids
- Egress Windows in Bedrooms
- 15" Raised Panel Shutters – Front and Door Side
- Pre-Finished Door Jambs
- Code Insulations
- 2 x 6 Sidewall, 16" O. C.
- 2 x 6 Floor Joists, 16" O. C.
- 100 Amp Service Entrance
- Copper Wiring
- CO/Smoke Detector with Battery Backup and False Alarm Control
- Exterior Receptacle with GFI Breaker
- Wire for Dryer
- Electrical Box Breaker
- Exterior Light at All Exterior Doors
- Iron Gas Piping with Shut-Off Valves

For your comfort and safety, Skyline home designs are approved and inspected for conformance to federal standards.

\*Dimensions stated to industry standards. Width and length dimensions are nominal and are not to be used for setup of home on site; consult selling retailers for exact specifications. Overall length does not include approximately four foot hitch. The square footage is approximate and based upon nominal exterior floor size.

Room sizes are measured from floor ends and wall centers.

Because of progressive product improvement, all prices and specifications are subject to change without prior notice or obligation to Skyline Corporation. Your retailer, an independent contractor, who is not an agent of Skyline Corporation, is the party responsible for your purchase contract and any additions, deletions, alterations, or attachments made to or in your home.



YOUR LOCAL SKYLINE RETAILER:



[WWW.SKYLINEHOMES.COM](http://WWW.SKYLINEHOMES.COM)

SKY 04-02-18-9700, 552-Leola, Printed in the U.S.A.

